

Product Datasheet

GAPDH Rabbit Polyclonal Antibody (HRP) (orb474724)

Catalog Number	orb474724
Category	Antibodies
Description	GAPDH Rabbit Polyclonal Antibody (HRP) is a HRP conjugated antibody targeting GAPDH. This antibody is suitable for ELISA, IHC-Fr, IHC-P, WB. It exhibits reactivity with Human, Mouse, Rat samples.
Target	GAPDH
Clonality	Polyclonal
Species/Host	Rabbit
Isotype	IgG
Conjugation	HRP
Reactivity	Human, Mouse, Rat
Predicted Reactivity	Hamster
Concentration	1mg/ml
Buffer/Preservatives	0.01M TBS (pH7.4) with 1% rAlbumin, 0.02% Proclin300 and 50% Glycerol.
Purification	Affinity purified by Protein A
Immunogen	Recombinant human GAPDH full length protein
Tested applications	ELISA, IHC-Fr, IHC-P, WB
Dilution range	WB=1:5000-50000, IHC-P=1:100-500, IHC-F=1:100-500, ELISA=1:500-5000

Biorbyt Ltd.

7 Signet Court, Swann Road
Cambridge
CB5 8LA
United Kingdom

Email: info@biorbyt.com, support@biorbyt.com

Phone: [+44 \(0\)1223 859353](tel:+44(0)1223859353) | Fax: [+1 \(415\) 651-8558](tel:+1(415)6518558)

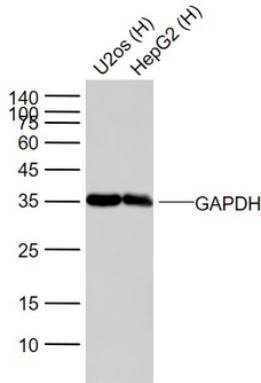
Biorbyt LLC

68 TW Alexander Drive
Research Triangle Park
Durham
NC 27713
United States

Email: info@biorbyt.com, support@biorbyt.com

Phone: [+1 \(415\) 906-5211](tel:+1(415)9065211) | Fax: [+1 \(415\) 651-8558](tel:+1(415)6518558)

Antibody Type	Primary Antibody
Storage	Shipped at 4°C. Store at -20°C for one year. Avoid repeated freeze/thaw cycles.
Note	For research use only
Expiration Date	12 months from date of receipt.



Sample: Lane 1: U2os (Human) Cell Lysate at 30 ug, Lane 2: HepG2 (Human) Cell Lysate at 30 ug, Primary: Anti-GAPGH (orb474724) at 1/20000 dilution, Predicted band size: 36 kD, Observed band size: 36 kD.

Biorbyt Ltd.

7 Signet Court, Swann Road
Cambridge
CB5 8LA
United Kingdom

Email: info@biorbyt.com, support@biorbyt.com

Phone: [+44 \(0\)1223 859353](tel:+44(0)1223859353) | Fax: [+1 \(415\) 651-8558](tel:+1(415)651-8558)

Biorbyt LLC

68 TW Alexander Drive
Research Triangle Park
Durham
NC 27713
United States

Email: info@biorbyt.com, support@biorbyt.com

Phone: [+1 \(415\) 906-5211](tel:+1(415)906-5211) | Fax: [+1 \(415\) 651-8558](tel:+1(415)651-8558)