

Product Datasheet

BCL2 Antibody (PE) (orb44690)

Catalog Number	orb44690
Category	Antibodies
Description	Mouse monoclonal antibody against BCL2 conjugated to PE
Target	BCL2
Clonality	Monoclonal
Isotype	Mouse IgG1
Conjugation	PE
Reactivity	Human
Buffer/Preservatives	Stabilizing phosphate buffered saline (PBS), pH 7.4, 15 mM sodium azide
Purification	Purified antibody is conjugated with R-phycoerythrin (PE) under optimum conditions. Unconjugated antibody and free fluorochrome are removed by size-exclusion chromatography.
Immunogen	Synthetic peptide corresponding to the amino acids 41-54 of human Bcl2
UniProt ID	P10415
RRID	AB_10990240
Tested applications	FC
Application notes	Flow cytometry: The reagent is designed for analysis of human blood cells using 20 µl reagent / 100 µl of whole blood or 10 ⁶ cells in a suspension. The content of a vial (2 ml) is sufficient for 100 tests. Intracellular staining.

Biorbyt Ltd.

7 Signet Court, Swann Road
Cambridge
CB5 8LA
United Kingdom

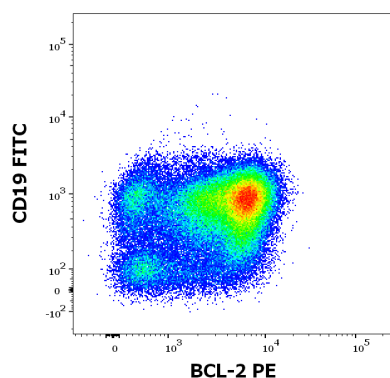
Email: info@biorbyt.com, support@biorbyt.com
Phone: [+44 \(0\)1223 859353](tel:+44(0)1223859353) | Fax: [+1 \(415\) 651-8558](tel:+1(415)651-8558)

Biorbyt LLC

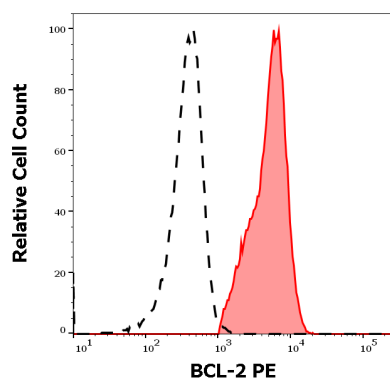
68 TW Alexander Drive
Research Triangle Park
Durham
NC 27713
United States

Email: info@biorbyt.com, support@biorbyt.com
Phone: [+1 \(415\) 906-5211](tel:+1(415)906-5211) | Fax: [+1 \(415\) 651-8558](tel:+1(415)651-8558)

Specificity	The mouse monoclonal antibody Bcl-2/100 recognizes Bcl2, a 26 kDa intracellular protooncogen with anti-apoptotic effect, expressed in outer mitochondrial membrane, endoplasmic reticulum and nuclear envelope.
Antibody Type	Primary Antibody
Clone Number	Bcl-2/100
Storage	Store at 2-8°C. Protect from prolonged exposure to light. Do not freeze.
Note	For research use only
Entrez	596
Expiration Date	12 months from date of receipt.



Flow cytometry multicolor staining of human lymphocytes stained using anti-human BCL2 (Bcl-2/100) PE antibody (intracellular staining, 10 µl reagent / 100 µl of peripheral whole blood from DLBCL patient) and anti-human CD19 (LT19) FITC antibody (surface staining, 20 µl reagent / 100 µl of peripheral whole blood from DLBCL patient).



Separation of human BCL-2 positive CD19 positive lymphocytes (red-filled) from neutrophil granulocytes (black-dashed) in flow cytometry analysis (intracellular staining) of human peripheral whole blood from DLBCL patient stained using anti-human BCL2 (Bcl-2/100) PE antibody (10 µl reagent / 100 µl of peripheral whole blood).

Biorbyt Ltd.

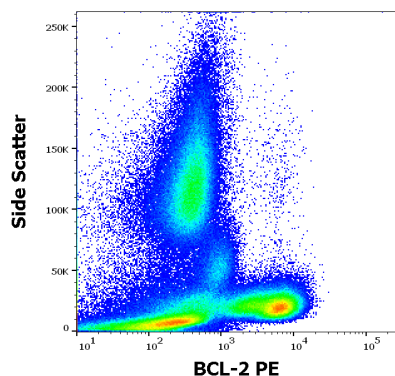
7 Signet Court, Swann Road
Cambridge
CB5 8LA
United Kingdom

Email: info@biorbyt.com, support@biorbyt.com
Phone: +44 (0)1223 859353 | Fax: +1 (415) 651-8558

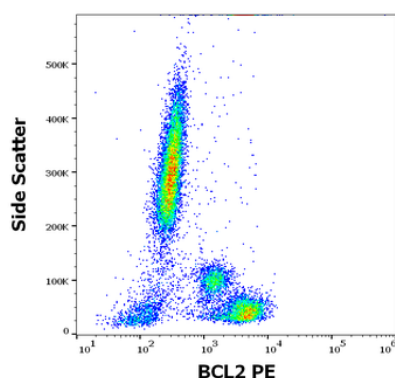
Biorbyt LLC

68 TW Alexander Drive
Research Triangle Park
Durham
NC 27713
United States

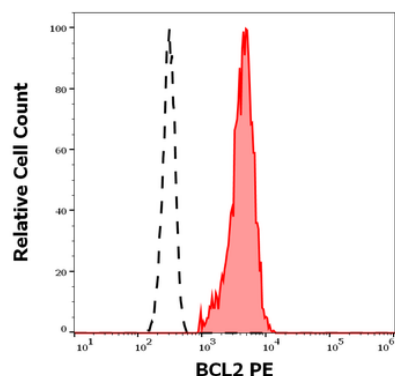
Email: info@biorbyt.com, support@biorbyt.com
Phone: +1 (415) 906-5211 | Fax: +1 (415) 651-8558



Flow cytometry intracellular staining pattern of human peripheral whole blood from diffuse large B-cell lymphoma (DLBCL) patient. Sample was stained using anti-human BCL2 (Bcl-2/100) PE antibody (10 µl reagent / 100 µl of peripheral whole blood).



Flow cytometry intracellular staining pattern of human peripheral whole blood stained using anti-human BCL2 (Bcl-2/100) PE antibody (concentration in sample 1.67 µg/ml).



Separation of human BCL2 positive lymphocytes (red-filled) from neutrophil granulocytes (black-dashed) in flow cytometry analysis (intracellular staining) of human peripheral whole blood stained using anti-human BCL2 (Bcl-2/100) PE antibody (concentration in sample 1.67 µg/ml).

Biorbyt Ltd.

7 Signet Court, Swann Road
Cambridge
CB5 8LA
United Kingdom

Email: info@biorbyt.com, support@biorbyt.com
Phone: +44 (0)1223 859353 | Fax: +1 (415) 651-8558

Biorbyt LLC

68 TW Alexander Drive
Research Triangle Park
Durham
NC 27713
United States

Email: info@biorbyt.com, support@biorbyt.com
Phone: +1 (415) 906-5211 | Fax: +1 (415) 651-8558