

Product Datasheet

betalll-Tubulin Antibody (FITC) (orb44545)

Catalog Number	orb44545
Category	Antibodies
Description	Mouse monoclonal antibody against Tubulin beta 3 conjugated to FITC
Target	betalll-Tubulin
Clonality	Monoclonal
Isotype	Mouse IgG1
Conjugation	FITC
Reactivity	Canine, Human, Mouse, Porcine, Rat
Concentration	1 mg/ml
Buffer/Preservatives	Phosphate buffered saline (PBS), pH 7.4, 15 mM sodium azide
Purification	Purified antibody is conjugated with fluorescein isothiocyanate (FITC) under optimum conditions and unconjugated antibody and free fluorochrome are removed by size-exclusion chromatography.
Immunogen	Peptide (C) 441-448 coupled to maleimide-activated keyhole limpet hemocyanin via cysteine added to the N-terminus of the neuron-specific peptide.
UniProt ID	Q13509
RRID	AB_10998423
Tested applications	FC, ICC
Application notes	Flow cytometry: Recommended dilution: 1-3 µg/ml. Intracellular staining.

Biorbyt Ltd.

7 Signet Court, Swann Road
Cambridge
CB5 8LA
United Kingdom

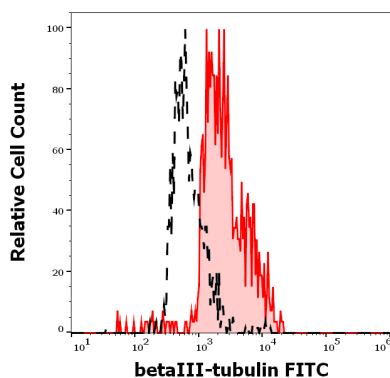
Email: info@biorbyt.com, support@biorbyt.com
Phone: [+44 \(0\)1223 859353](tel:+44(0)1223859353) | Fax: [+1 \(415\) 651-8558](tel:+1(415)651-8558)

Biorbyt LLC

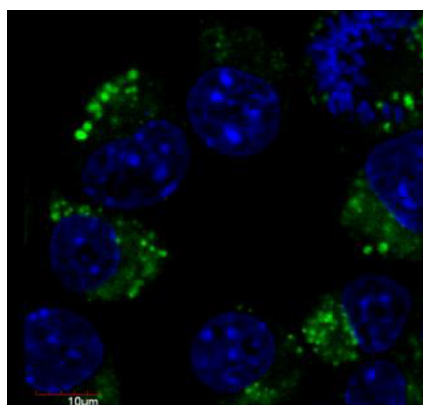
68 TW Alexander Drive
Research Triangle Park
Durham
NC 27713
United States

Email: info@biorbyt.com, support@biorbyt.com
Phone: [+1 \(415\) 906-5211](tel:+1(415)906-5211) | Fax: [+1 \(415\) 651-8558](tel:+1(415)651-8558)

Specificity	The antibody TU-20 recognizes C-terminal peptide sequence ESESQGPK (aa 441-448) of neuron-specific human betaIII-tubulin.
Antibody Type	Primary Antibody
Clone Number	TU-20
Storage	Store at 2-8°C. Protect from prolonged exposure to light. Do not freeze.
Note	For research use only
Entrez	10381
Expiration Date	12 months from date of receipt.



Separation of MCF-7 cells stained using anti-human betaIII-Tubulin (TU-20) FITC antibody (10 µl reagent per million cells in 100 µl of cell suspension, red-filled) from MCF-7 cells stained using mouse IgG1 isotype control (MOPC-21) FITC antibody (concentration in sample 15 µg/ml, same as betaIII-Tubulin FITC concentration, black-dashed) in flow cytometry analysis (intracellular staining) of MCF-7 cell suspension.



Immunofluorescence staining of Neuro2a mouse neuroblastoma cell line using anti-betaIII-tubulin (TU-20 FITC, green, 1 µg/ml). Nuclei were stained with DAPI (blue).

Biorbyt Ltd.

7 Signet Court, Swann Road
Cambridge
CB5 8LA
United Kingdom

Email: info@biorbyt.com, support@biorbyt.com

Phone: +44 (0)1223 859353 | Fax: +1 (415) 651-8558

Biorbyt LLC

68 TW Alexander Drive
Research Triangle Park
Durham
NC 27713
United States

Email: info@biorbyt.com, support@biorbyt.com

Phone: +1 (415) 906-5211 | Fax: +1 (415) 651-8558