

Product Datasheet

STAT1 Antibody (orb44490)

Catalog Number	orb44490
Category	Antibodies
Description	Mouse Monoclonal to STAT1.
Target	STAT1
Clonality	Monoclonal
Isotype	Mouse IgG2b
Conjugation	Unconjugated
Reactivity	Human, Mouse
Concentration	1 mg/ml
Buffer/Preservatives	Phosphate buffered saline (PBS), pH 7.4, 15 mM sodium azide
Purification	Purified by protein-A affinity chromatography.
Immunogen	STAT1 peptide sequence 721-733 (DNLLPMSPEEFDE).
UniProt ID	P42224
RRID	AB_11020104
Tested applications	IHC-P, IP, WB
Application notes	Immunohistochemistry (paraffin sections): Recommended dilution: 5 µg/ml; positive tissue: lung macrophages. Western blotting: Recommended dilution 1-2 µg/ml.

Biorbyt Ltd.

7 Signet Court, Swann Road
Cambridge
CB5 8LA
United Kingdom

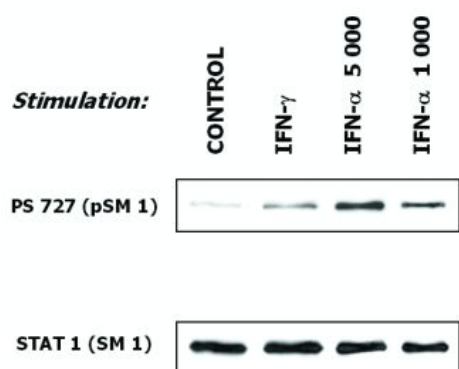
Email: info@biorbyt.com, support@biorbyt.com
Phone: [+44 \(0\)1223 859353](tel:+44(0)1223859353) | Fax: [+1 \(415\) 651-8558](tel:+1(415)651-8558)

Biorbyt LLC

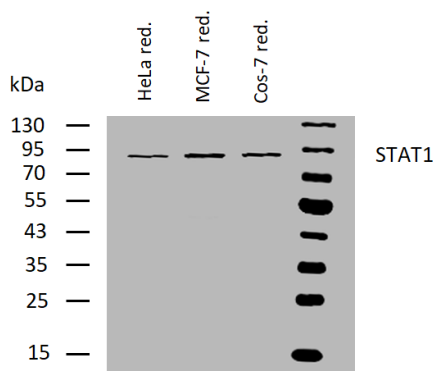
68 TW Alexander Drive
Research Triangle Park
Durham
NC 27713-2847
United States

Email: info@biorbyt.com, support@biorbyt.com
Phone: [+1 \(415\) 906-5211](tel:+1(415)906-5211) | Fax: [+1 \(415\) 651-8558](tel:+1(415)651-8558)

Specificity	The antibody SM1 recognizes an epitope included within amino acids 721-733 of STAT1, a 91 kDa transcriptional factor involved in a variety of systems including antiviral responses and interferon alpha (IFN-alpha) and gamma (IFN-gamma) signal transduction.
Antibody Type	Primary Antibody
Clone Number	SM1
Storage	Maintain refrigerated at 2-8°C for up to 2 weeks. For long term storage store at -20°C in small aliquots to prevent freeze-thaw cycles.
Note	For research use only
Entrez	6772
Expiration Date	12 months from date of receipt.



Detection of Human phosphorylated STAT1[p Ser727] and total STAT1 by Western Blot. Western blot shows lysate of human malignant melanoma cells (short-term culture derived from a patient) in response to interferon treatment to induce phosphorylation of STAT1 at Ser727. Subconfluent cells were serum-starved before exposure to activation dosages of IFN-gamma (10 ng/ml) and IFN-alpha (1000 IU/ml and 5000 IU/ml). Specific band was detected for phosphorylated STAT1[Ser727] by the antibody PSM1 (upper panel) and total STAT1 level by the antibody SM1 (lower panel).



Western blotting analysis of human STAT1 using mouse monoclonal antibody SM1 on lysates of HeLa, MCF-7, and Cos-7 cell lines under reducing conditions. Nitrocellulose membrane was probed with 2 μ g/ml of mouse monoclonal antibody anti-STAT1 followed by IRDye800-conjugated anti-mouse secondary antibody. STAT1 was detected at approximately 90 kDa.

Biorbyt Ltd.

7 Signet Court, Swann Road
Cambridge
CB5 8LA
United Kingdom

Email: info@biorbyt.com, support@biorbyt.com
Phone: +44 (0)1223 859353 | Fax: +1 (415) 651-8558

Biorbyt LLC

68 TW Alexander Drive
Research Triangle Park
Durham
NC 27713-2847
United States

Email: info@biorbyt.com, support@biorbyt.com
Phone: +1 (415) 906-5211 | Fax: +1 (415) 651-8558