

## Product Datasheet

### HLA-G Antibody (orb44426)

<b>Catalog Number</b>	orb44426
<b>Category</b>	Antibodies
<b>Description</b>	Mouse Monoclonal to HLA-G.
<b>Target</b>	HLA-G
<b>Clonality</b>	Monoclonal
<b>Isotype</b>	Mouse IgG1
<b>Conjugation</b>	Unconjugated
<b>Reactivity</b>	Human
<b>Concentration</b>	1 mg/ml
<b>Buffer/Preservatives</b>	Phosphate buffered saline (PBS), pH 7.4, 15 mM sodium azide
<b>Purification</b>	Purified by protein-A affinity chromatography.
<b>Immunogen</b>	Denatured bacterially expressed recombinant human HLA-G heavy chain.
<b>UniProt ID</b>	<b>P17693</b>
<b>RRID</b>	AB_10991507
<b>Tested applications</b>	IHC-Fr, IHC-P, WB
<b>Application notes</b>	Immunohistochemistry (paraffin sections): Recommended dilution: 1:60 to 1:100, incubation: 1 h at RT; positive tissue: human placenta - extravillous cytotrophoblast, heat retrieval in 0.01M citrate buffer (4x2 min. in microwave oven).Western blotting: Recommended dilution 1-2 µg/ml.

**Biorbyt Ltd.**

7 Signet Court, Swann Road  
Cambridge  
CB5 8LA  
United Kingdom

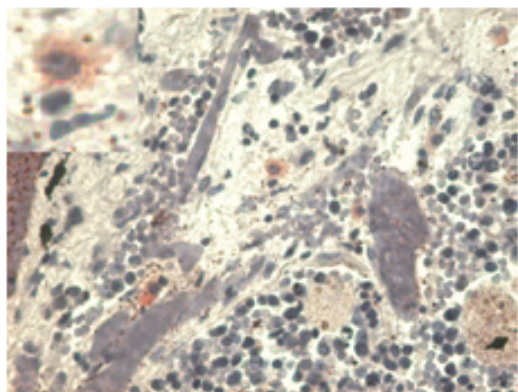
Email: [info@biorbyt.com](mailto:info@biorbyt.com), [support@biorbyt.com](mailto:support@biorbyt.com)  
Phone: [+44 \(0\)1223 859353](tel:+44(0)1223859353) | Fax: [+1 \(415\) 651-8558](tel:+1(415)651-8558)

**Biorbyt LLC**

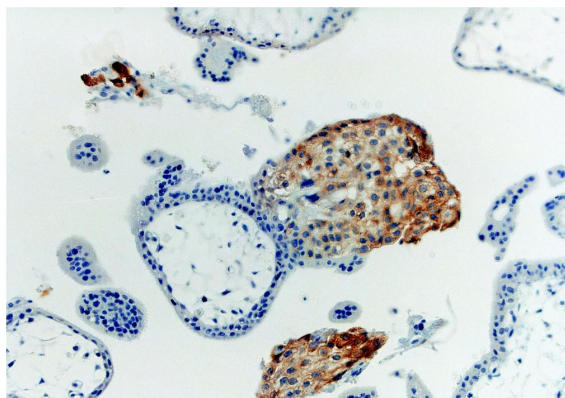
68 TW Alexander Drive  
Research Triangle Park  
Durham  
NC 27713  
United States

Email: [info@biorbyt.com](mailto:info@biorbyt.com), [support@biorbyt.com](mailto:support@biorbyt.com)  
Phone: [+1 \(415\) 906-5211](tel:+1(415)906-5211) | Fax: [+1 \(415\) 651-8558](tel:+1(415)651-8558)

<b>Specificity</b>	The antibody MEM-G/1 reacts with an extracellular epitope of denaturated HLA-G heavy chain. HLA-G belongs to the MHC Class I molecules (MHC Class Ib; nonclassical) and it is expressed on the surface of trophoblast cells.
<b>Antibody Type</b>	Primary Antibody
<b>Clone Number</b>	MEM-G/1
<b>Storage</b>	Maintain refrigerated at 2-8°C for up to 2 weeks. For long term storage store at -20°C in small aliquots to prevent freeze-thaw cycles.
<b>Note</b>	For research use only
<b>Entrez</b>	<b>3135</b>
<b>Expiration Date</b>	12 months from date of receipt.



Immunohistochemistry staining with anti-human HLA-G (MEM-G/1) - pulmonary diseases (paraffin-embedded sections). The antibody MEM-G/1 stains infiltrating macrophages in pulmonary diseases. In the top left corner see the detail of macrophage.



Immunohistochemistry staining with anti-human HLA-G (MEM-G/1) of first trimester placenta (paraffin-embedded sections).

**Biorbyt Ltd.**

7 Signet Court, Swann Road  
Cambridge  
CB5 8LA  
United Kingdom

Email: [info@biorbyt.com](mailto:info@biorbyt.com), [support@biorbyt.com](mailto:support@biorbyt.com)

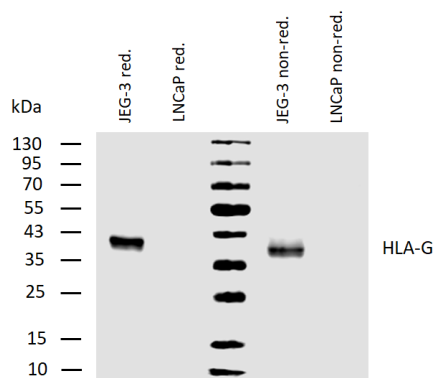
Phone: +44 (0)1223 859353 | Fax: +1 (415) 651-8558

**Biorbyt LLC**

68 TW Alexander Drive  
Research Triangle Park  
Durham  
NC 27713  
United States

Email: [info@biorbyt.com](mailto:info@biorbyt.com), [support@biorbyt.com](mailto:support@biorbyt.com)

Phone: +1 (415) 906-5211 | Fax: +1 (415) 651-8558



Western blotting analysis of human HLA-G using mouse monoclonal antibody MEM-G/1 on lysates of JEG-3 cell line and LNCaP cell line (negative control) under reducing and non-reducing conditions. Nitrocellulose membrane was probed with 2  $\mu$ g/ml of mouse monoclonal antibody anti-HLA-G followed by IRDye800-conjugated anti-mouse secondary antibody. HLA-G was detected at approximately 40 kDa.

**Biorbyt Ltd.**

7 Signet Court, Swann Road  
Cambridge  
CB5 8LA  
United Kingdom

Email: [info@biorbyt.com](mailto:info@biorbyt.com), [support@biorbyt.com](mailto:support@biorbyt.com)

Phone: +44 (0)1223 859353 | Fax: +1 (415) 651-8558

**Biorbyt LLC**

68 TW Alexander Drive  
Research Triangle Park  
Durham  
NC 27713  
United States

Email: [info@biorbyt.com](mailto:info@biorbyt.com), [support@biorbyt.com](mailto:support@biorbyt.com)

Phone: +1 (415) 906-5211 | Fax: +1 (415) 651-8558