

## Product Datasheet

### CD25 Antibody (APC) (orb44159)

<b>Catalog Number</b>	orb44159
<b>Category</b>	Antibodies
<b>Description</b>	Mouse monoclonal antibody to CD25
<b>Target</b>	CD25
<b>Clonality</b>	Monoclonal
<b>Isotype</b>	Mouse IgG1 kappa
<b>Conjugation</b>	APC
<b>Reactivity</b>	Human
<b>Buffer/Preservatives</b>	Stabilizing phosphate buffered saline (PBS), pH 7.4, 15 mM sodium azide
<b>Purification</b>	Purified antibody is conjugated with activated allophycocyanin (APC) under optimum conditions and unconjugated antibody and free fluorochrome are removed by size-exclusion chromatography.
<b>Immunogen</b>	PHA-activated peripheral blood leucocytes
<b>UniProt ID</b>	<b>P01589</b>
<b>RRID</b>	AB_10994421
<b>Tested applications</b>	FC
<b>Application notes</b>	Flow cytometry: The reagent is designed for analysis of human blood cells using 10 µl reagent / 100 µl of whole blood or 10 <sup>6</sup> cells in a suspension. The content of a vial (1 ml) is sufficient for 100 tests.

**Biorbyt Ltd.**

7 Signet Court, Swann Road  
Cambridge  
CB5 8LA  
United Kingdom

Email: [info@biorbyt.com](mailto:info@biorbyt.com), [support@biorbyt.com](mailto:support@biorbyt.com)  
Phone: [+44 \(0\)1223 859353](tel:+44(0)1223859353) | Fax: [+1 \(415\) 651-8558](tel:+1(415)651-8558)

**Biorbyt LLC**

68 TW Alexander Drive  
Research Triangle Park  
Durham  
NC 27713-2847  
United States

Email: [info@biorbyt.com](mailto:info@biorbyt.com), [support@biorbyt.com](mailto:support@biorbyt.com)  
Phone: [+1 \(415\) 906-5211](tel:+1(415)906-5211) | Fax: [+1 \(415\) 651-8558](tel:+1(415)651-8558)

**Specificity**

The antibody MEM-181 reacts with an extracellular epitope of CD25 (Interleukin-2 receptor alpha chain), a 55 kDa type I transmembrane glycoprotein expressed on activated B and T lymphocytes, activated monocytes/macrophages and on CD4+ T lymphocytes (T regulatory cells); it is lost on resting B and T lymphocytes.

**Antibody Type**

Primary Antibody

**Clone Number**

MEM-181

**Storage**

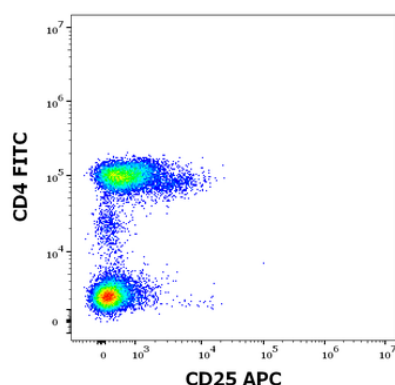
Store at 2-8°C. Protect from prolonged exposure to light. Do not freeze.

**Note**

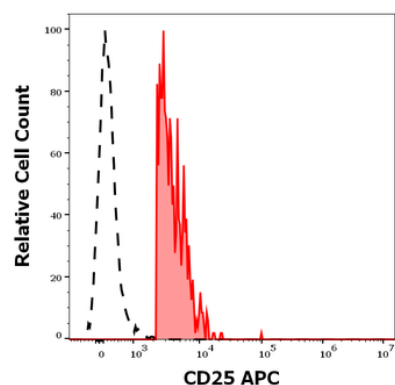
For research use only

**Entrez****3559****Expiration Date**

12 months from date of receipt.



Flow cytometry multicolor surface staining pattern of human lymphocytes using anti-human CD25 APC antibody (concentration in sample 0.5 µg/mL) and anti-human CD4 FITC antibody (20 µl reagent / 100 µl of peripheral whole blood).



Separation of CD4 positive CD25 positive Treg cells (red-filled) from CD4 negative CD25 negative lymphocytes (black-dashed) in flow cytometry analysis (surface staining) of human peripheral whole blood stained using anti-human CD25 APC antibody (concentration in sample 0.5 µg/mL).

**Biorbyt Ltd.**

7 Signet Court, Swann Road  
Cambridge  
CB5 8LA  
United Kingdom

Email: [info@biorbyt.com](mailto:info@biorbyt.com), [support@biorbyt.com](mailto:support@biorbyt.com)

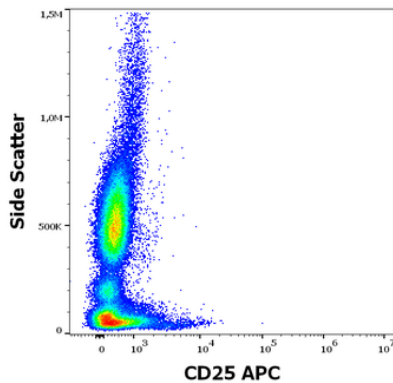
Phone: +44 (0)1223 859353 | Fax: +1 (415) 651-8558

**Biorbyt LLC**

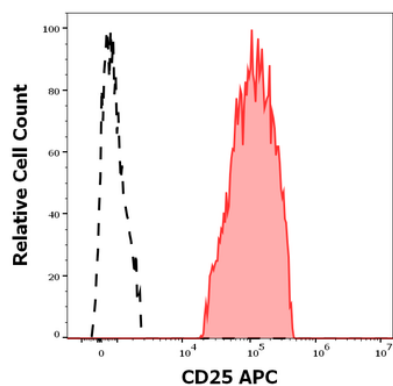
68 TW Alexander Drive  
Research Triangle Park  
Durham  
NC 27713-2847  
United States

Email: [info@biorbyt.com](mailto:info@biorbyt.com), [support@biorbyt.com](mailto:support@biorbyt.com)

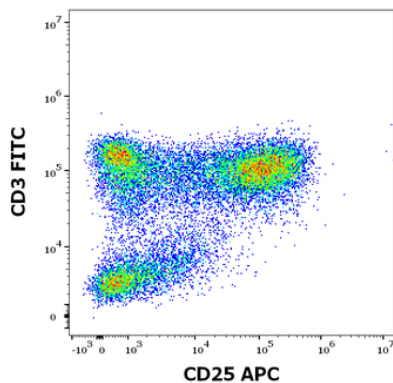
Phone: +1 (415) 906-5211 | Fax: +1 (415) 651-8558



Flow cytometry surface staining pattern of human peripheral whole blood stained using anti-human CD25 APC antibody (concentration in sample 0.5 µg/mL).



Separation of CD3 positive CD25 positive lymphocytes (red-filled) from CD3 negative CD25 negative lymphocytes (black-dashed) in flow cytometry analysis (surface staining) of human PHA stimulated peripheral whole blood stained using anti-human CD25 APC antibody (concentration in sample 0.5 µg/mL).



Flow cytometry multicolor surface staining pattern of human PHA stimulated lymphocytes using anti-human CD25 APC antibody (concentration in sample 0.5 µg/mL) and anti-human CD3 FITC antibody (20 µl reagent / 100 µl of peripheral whole blood).

**Biorbyt Ltd.**

7 Signet Court, Swann Road  
Cambridge  
CB5 8LA  
United Kingdom

Email: [info@biorbyt.com](mailto:info@biorbyt.com), [support@biorbyt.com](mailto:support@biorbyt.com)  
Phone: +44 (0)1223 859353 | Fax: +1 (415) 651-8558

**Biorbyt LLC**

68 TW Alexander Drive  
Research Triangle Park  
Durham  
NC 27713-2847  
United States

Email: [info@biorbyt.com](mailto:info@biorbyt.com), [support@biorbyt.com](mailto:support@biorbyt.com)  
Phone: +1 (415) 906-5211 | Fax: +1 (415) 651-8558