

Product Datasheet

CD25 Antibody (FITC) (orb44157)

Catalog Number	orb44157
Category	Antibodies
Description	Mouse monoclonal antibody against CD25 conjugated to FITC
Target	CD25
Clonality	Monoclonal
Isotype	Mouse IgG1 kappa
Conjugation	FITC
Reactivity	Human
Buffer/Preservatives	Stabilizing phosphate buffered saline (PBS), pH 7.4, 15 mM sodium azide
Purification	Purified antibody is conjugated with fluorescein isothiocyanate (FITC) under optimum conditions and unconjugated antibody and free fluorochrome are removed by size-exclusion chromatography.
Immunogen	PHA-activated peripheral blood leucocytes
UniProt ID	P01589
RRID	AB_10990815
Tested applications	FC
Application notes	Flow cytometry: The reagent is designed for analysis of human blood cells using 20 µl reagent / 100 µl of whole blood or 10 ⁶ cells in a suspension. The content of a vial (2 ml) is sufficient for 100 tests.

Biorbyt Ltd.

7 Signet Court, Swann Road
Cambridge
CB5 8LA
United Kingdom

Email: info@biorbyt.com, support@biorbyt.com
Phone: [+44 \(0\)1223 859353](tel:+44(0)1223859353) | Fax: [+1 \(415\) 651-8558](tel:+1(415)651-8558)

Biorbyt LLC

68 TW Alexander Drive
Research Triangle Park
Durham
NC 27713-2847
United States

Email: info@biorbyt.com, support@biorbyt.com
Phone: [+1 \(415\) 906-5211](tel:+1(415)906-5211) | Fax: [+1 \(415\) 651-8558](tel:+1(415)651-8558)

Specificity

The antibody MEM-181 reacts with an extracellular epitope of CD25 (Interleukin-2 receptor alpha chain), a 55 kDa type I transmembrane glycoprotein expressed on activated B and T lymphocytes, activated monocytes/macrophages and on CD4+ T lymphocytes (T regulatory cells); it is lost on resting B and T lymphocytes.

Antibody Type

Primary Antibody

Clone Number

MEM-181

Storage

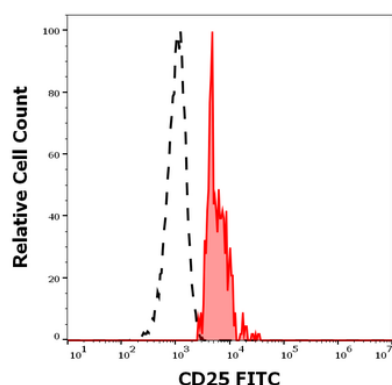
Store at 2-8°C. Protect from prolonged exposure to light. Do not freeze.

Note

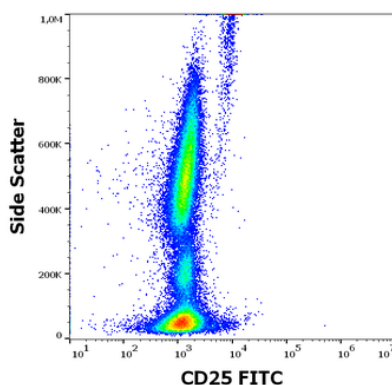
For research use only

Entrez**3559****Expiration Date**

12 months from date of receipt.



Separation of CD4 positive CD25 positive Treg cells (red-filled) from CD4 negative CD25 negative lymphocytes (black-dashed) in flow cytometry analysis (surface staining) of human peripheral whole blood stained using anti-human CD25 FITC antibody (concentration in sample 0.5 µg/mL).



Flow cytometry surface staining pattern of human peripheral whole blood stained using anti-human CD25 FITC antibody (concentration in sample 0.5 µg/mL).

Biorbyt Ltd.

7 Signet Court, Swann Road
Cambridge
CB5 8LA
United Kingdom

Email: info@biorbyt.com, support@biorbyt.com

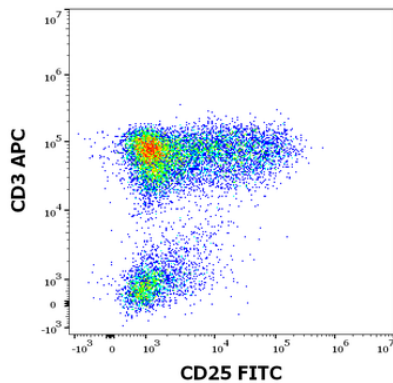
Phone: +44 (0)1223 859353 | Fax: +1 (415) 651-8558

Biorbyt LLC

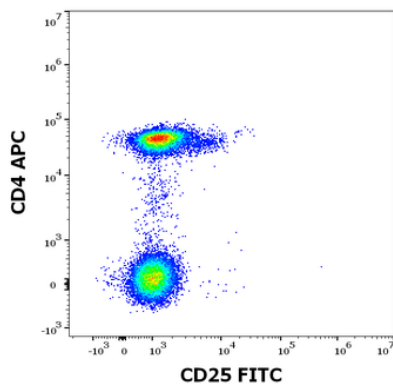
68 TW Alexander Drive
Research Triangle Park
Durham
NC 27713-2847
United States

Email: info@biorbyt.com, support@biorbyt.com

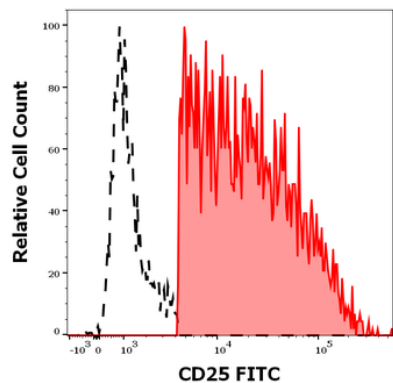
Phone: +1 (415) 906-5211 | Fax: +1 (415) 651-8558



Flow cytometry multicolor surface staining pattern of human PHA stimulated lymphocytes using anti-human CD25 FITC antibody (concentration in sample 0.5 µg/mL) and anti-human CD3 APC antibody (10 µl reagent / 100 µl of peripheral whole blood).



Flow cytometry multicolor surface staining pattern of human lymphocytes using anti-human CD25 FITC antibody (concentration in sample 0.5 µg/mL) and anti-human CD4 APC antibody (10 µl reagent / 100 µl of peripheral whole blood).



Separation of CD3 positive CD25 positive lymphocytes (red-filled) from CD3 negative CD25 negative lymphocytes (black-dashed) in flow cytometry analysis (surface staining) of human PHA stimulated peripheral whole blood stained using anti-human CD25 FITC antibody (concentration in sample 0.5 µg/mL).

Biorbyt Ltd.

7 Signet Court, Swann Road
Cambridge
CB5 8LA
United Kingdom

Email: info@biorbyt.com, support@biorbyt.com

Phone: +44 (0)1223 859353 | Fax: +1 (415) 651-8558

Biorbyt LLC

68 TW Alexander Drive
Research Triangle Park
Durham
NC 27713-2847
United States

Email: info@biorbyt.com, support@biorbyt.com

Phone: +1 (415) 906-5211 | Fax: +1 (415) 651-8558