

## Product Datasheet

### HLA-DR/DP Antibody (PE) (orb44067)

<b>Catalog Number</b>	orb44067
<b>Category</b>	Antibodies
<b>Description</b>	Mouse Monoclonal to HLA-DR.
<b>Target</b>	HLA-DR/DP
<b>Clonality</b>	Monoclonal
<b>Isotype</b>	Mouse IgG1
<b>Conjugation</b>	PE
<b>Reactivity</b>	Human
<b>Buffer/Preservatives</b>	Stabilizing phosphate buffered saline (PBS), pH 7.4, 15 mM sodium azide
<b>Purification</b>	Purified antibody is conjugated with R-phycoerythrin (PE) under optimum conditions. Unconjugated antibody and free fluorochrome are removed by size-exclusion chromatography.
<b>Immunogen</b>	PHA-activated peripheral blood lymphocytes.
<b>RRID</b>	AB_10992295
<b>Tested applications</b>	FC
<b>Application notes</b>	Flow cytometry: The reagent is designed for analysis of human blood cells using 20 µl reagent / 100 µl of whole blood or 10 <sup>6</sup> cells in a suspension. The content of a vial (2 ml) is sufficient for 100 tests.

**Biorbyt Ltd.**

7 Signet Court, Swann Road  
Cambridge  
CB5 8LA  
United Kingdom

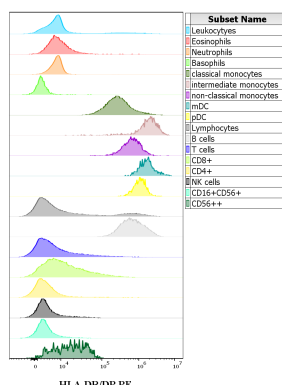
Email: [info@biorbyt.com](mailto:info@biorbyt.com), [support@biorbyt.com](mailto:support@biorbyt.com)  
Phone: [+44 \(0\)1223 859353](tel:+44(0)1223859353) | Fax: [+1 \(415\) 651-8558](tel:+1(415)651-8558)

**Biorbyt LLC**

68 TW Alexander Drive  
Research Triangle Park  
Durham  
NC 27713  
United States

Email: [info@biorbyt.com](mailto:info@biorbyt.com), [support@biorbyt.com](mailto:support@biorbyt.com)  
Phone: [+1 \(415\) 906-5211](tel:+1(415)906-5211) | Fax: [+1 \(415\) 651-8558](tel:+1(415)651-8558)

<b>Specificity</b>	The antibody MEM-136 recognizes a common extracellular epitope on beta-chain of human HLA-DR and HLA-DP. It reacts with alpha/beta dimer as well as with dissociated beta-subunit. DR and DP are the isotypes of human MHC Class II molecules expressed on antigen-presenting cells (APC; dendritic cells, B lymphocytes, monocytes, macrophages).
<b>Antibody Type</b>	Primary Antibody
<b>Clone Number</b>	MEM-136
<b>Storage</b>	Store at 2-8°C. Protect from prolonged exposure to light. Do not freeze.
<b>Note</b>	For research use only
<b>Entrez</b>	<b>35</b>
<b>Expiration Date</b>	12 months from date of receipt.



Expression profiling on peripheral blood subsets using Anti-human HLA-DR/DP PE antibody (clone MEM-136). HCDM CDMaps standardized procedures were used for cell isolation and surface staining of blood leukocytes, with the modification of staining protocol using cytometry test tubes. Suspension of blood leukocytes isolated from buffy coats ( $2 \times 10^6$  cells) was added to the mixture of anti-human HLA-DR/DP PE antibody (clone MEM-136, 20  $\mu$ l reagent / 100  $\mu$ l of stained blood sample) and Monocyte Blocking Buffer, vortexed and incubated for 20 min. Next, optimized backbone antibody panels (HLDA Innate and HLDA Adaptive) were added to test tubes, vortexed and incubated for 20 min. The residual erythrocytes were lysed with 2 ml of 10 $\times$  diluted EXCELLYSE Easy solution and incubated for 10 min. Finally, samples were centrifuged (670 g, 5 min.), supernatant removed and the cell pellet was resuspended in 200  $\mu$ l of PBS for acquisition.

**Biorbyt Ltd.**

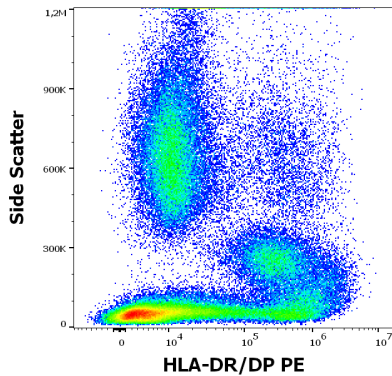
7 Signet Court, Swann Road  
Cambridge  
CB5 8LA  
United Kingdom

Email: [info@biorbyt.com](mailto:info@biorbyt.com), [support@biorbyt.com](mailto:support@biorbyt.com)  
Phone: +44 (0)1223 859353 | Fax: +1 (415) 651-8558

**Biorbyt LLC**

68 TW Alexander Drive  
Research Triangle Park  
Durham  
NC 27713  
United States

Email: [info@biorbyt.com](mailto:info@biorbyt.com), [support@biorbyt.com](mailto:support@biorbyt.com)  
Phone: +1 (415) 906-5211 | Fax: +1 (415) 651-8558



Anti-human HLA-DR/DP PE antibody (clone MEM-136) works in flow cytometry application. Analysis of the antibody staining profile was performed on blood leukocytes isolated from buffy coats. HCDM CDMaps standardized procedures were used for cell isolation and surface staining of blood leukocytes, with the modification of staining protocol using cytometry test tubes. Mouse monoclonal anti-human HLA-DR/DP PE antibody (clone MEM-136) was used in amount of 20 µl in 100 µl of blood sample ( $2 \times 10^6$  cells).

**Biorbyt Ltd.**

7 Signet Court, Swann Road  
Cambridge  
CB5 8LA  
United Kingdom

Email: [info@biorbyt.com](mailto:info@biorbyt.com), [support@biorbyt.com](mailto:support@biorbyt.com)

Phone: [+44 \(0\)1223 859353](tel:+44(0)1223859353) | Fax: [+1 \(415\) 651-8558](tel:+1(415)651-8558)

**Biorbyt LLC**

68 TW Alexander Drive  
Research Triangle Park  
Durham  
NC 27713  
United States

Email: [info@biorbyt.com](mailto:info@biorbyt.com), [support@biorbyt.com](mailto:support@biorbyt.com)

Phone: [+1 \(415\) 906-5211](tel:+1(415)906-5211) | Fax: [+1 \(415\) 651-8558](tel:+1(415)651-8558)