

## Product Datasheet

### Human GAL3 ELISA Kit (orb439662)

<b>Catalog Number</b>	orb439662
<b>Category</b>	Assays and Kits
<b>Description</b>	Human Galectin 3 (GAL3) Sandwich ELISA Kit
<b>Reactivity</b>	Human
<b>Form/Appearance</b>	Traditional
<b>UniProt ID</b>	<b>P17931</b>
<b>Assay Type</b>	Sandwich
<b>Assay Time</b>	4.5 hours
<b>Range</b>	0.156-10 ng/mL
<b>Sensitivity</b>	0.057 ng/mL
<b>Sample Types</b>	serum, plasma, tissue homogenates, cell lysates, cell culture supernatants and other biological fluids
<b>Storage</b>	TMB Substrate, Wash Buffer, Stop Solution at 4°C, all others at -20°C
<b>Note</b>	For research use only
<b>Entrez</b>	<b>3958</b>
<b>Expiration Date</b>	Please enquire.

**Biorbyt Ltd.**

7 Signet Court, Swann Road  
Cambridge  
CB5 8LA  
United Kingdom

Email: [info@biorbyt.com](mailto:info@biorbyt.com), [support@biorbyt.com](mailto:support@biorbyt.com)

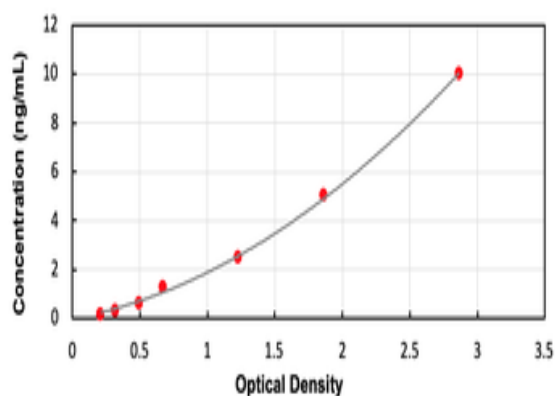
Phone: [+44 \(0\)1223 859353](tel:+44(0)1223859353) | Fax: [+1 \(415\) 651-8558](tel:+1(415)651-8558)

**Biorbyt LLC**

68 TW Alexander Drive  
Research Triangle Park  
Durham  
NC 27713-2847  
United States

Email: [info@biorbyt.com](mailto:info@biorbyt.com), [support@biorbyt.com](mailto:support@biorbyt.com)

Phone: [+1 \(415\) 906-5211](tel:+1(415)906-5211) | Fax: [+1 \(415\) 651-8558](tel:+1(415)651-8558)



Standard curve for orb439662 ELISA kit.

## Biorbyt Ltd.

7 Signet Court, Swann Road  
Cambridge  
CB5 8LA  
United Kingdom

Email: [info@biorbyt.com](mailto:info@biorbyt.com), [support@biorbyt.com](mailto:support@biorbyt.com)

Phone: [+44 \(0\)1223 859353](tel:+44(0)1223859353) | Fax: [+1 \(415\) 651-8558](tel:+1(415)651-8558)

## Biorbyt LLC

68 TW Alexander Drive  
Research Triangle Park  
Durham  
NC 27713-2847  
United States

Email: [info@biorbyt.com](mailto:info@biorbyt.com), [support@biorbyt.com](mailto:support@biorbyt.com)

Phone: [+1 \(415\) 906-5211](tel:+1(415)906-5211) | Fax: [+1 \(415\) 651-8558](tel:+1(415)651-8558)