

Product Datasheet

HLA-DR/DP Antibody (PE) (orb43866)

Catalog Number	orb43866
Category	Antibodies
Description	Mouse Monoclonal to HLA-DR.
Target	HLA-DR/DP
Clonality	Monoclonal
Isotype	Mouse IgG2a
Conjugation	PE
Reactivity	Human, Porcine
Buffer/Preservatives	Stabilizing phosphate buffered saline (PBS), pH 7.4, 15 mM sodium azide
Purification	Purified antibody is conjugated with R-phycoerythrin (PE) under optimum conditions. Unconjugated antibody and free fluorochrome are removed by size-exclusion chromatography.
Immunogen	Raji Burkitt's lymphoma cell line
RRID	AB_10995946
Tested applications	FC
Application notes	Flow cytometry: The reagent is designed for analysis of human blood cells using 20 µl reagent / 100 µl of whole blood or 10 ⁶ cells in a suspension. The content of a vial (2 ml) is sufficient for 100 tests.

Biorbyt Ltd.

7 Signet Court, Swann Road
Cambridge
CB5 8LA
United Kingdom

Email: info@biorbyt.com, support@biorbyt.com

Phone: +44 (0)1223 859353 | Fax: +1 (415) 651-8558

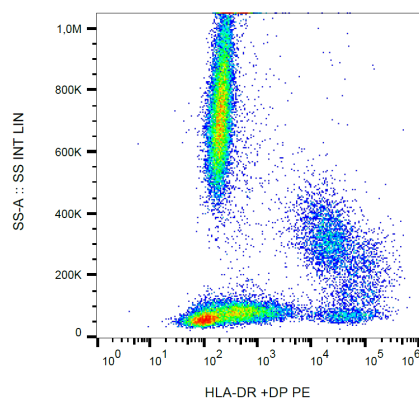
Biorbyt LLC

68 TW Alexander Drive
Research Triangle Park
Durham
NC 27713
United States

Email: info@biorbyt.com, support@biorbyt.com

Phone: +1 (415) 906-5211 | Fax: +1 (415) 651-8558

Specificity	The antibody HL-38 recognizes an extracellular common epitope on beta-chain of human HLA-DR and HLA-DP. DR and DP are the isotypes of human MHC Class II molecules expressed on antigen-presenting cells (APC; dendritic cells, B lymphocytes, monocytes, macrophages).
Antibody Type	Primary Antibody
Clone Number	HL-38
Storage	Store at 2-8°C. Protect from prolonged exposure to light. Do not freeze.
Note	For research use only
Entrez	35
Expiration Date	12 months from date of receipt.



Flow cytometry analysis (surface staining) of human peripheral blood with anti-(HL-38) PE.

Biorbyt Ltd.

7 Signet Court, Swann Road
Cambridge
CB5 8LA
United Kingdom

Email: info@biorbyt.com, support@biorbyt.com

Phone: [+44 \(0\)1223 859353](tel:+44(0)1223859353) | Fax: [+1 \(415\) 651-8558](tel:+1(415)651-8558)

Biorbyt LLC

68 TW Alexander Drive
Research Triangle Park
Durham
NC 27713
United States

Email: info@biorbyt.com, support@biorbyt.com

Phone: [+1 \(415\) 906-5211](tel:+1(415)906-5211) | Fax: [+1 \(415\) 651-8558](tel:+1(415)651-8558)