

Product Datasheet

Human CDNF ELISA Kit (orb438553)

| | |
|------------------------|---|
| Catalog Number | orb438553 |
| Category | Assays and Kits |
| Description | Human Cerebral Dopamine Neurotrophic Factor (CDNF) Sandwich ELISA Kit |
| Reactivity | Human |
| Form/Appearance | Traditional |
| UniProt ID | Q49AH0 |
| Assay Type | Sandwich |
| Assay Time | 4.5 hours |
| Range | 0.156-10 ng/mL |
| Sensitivity | 0.057 ng/mL |
| Sample Types | serum, plasma, tissue homogenates, cell lysates and other biological fluids |
| Storage | TMB Substrate, Wash Buffer, Stop Solution at 4°C, all others at -20°C |
| Note | For research use only |
| Entrez | 441549 |
| Expiration Date | Please enquire. |

Biorbyt Ltd.

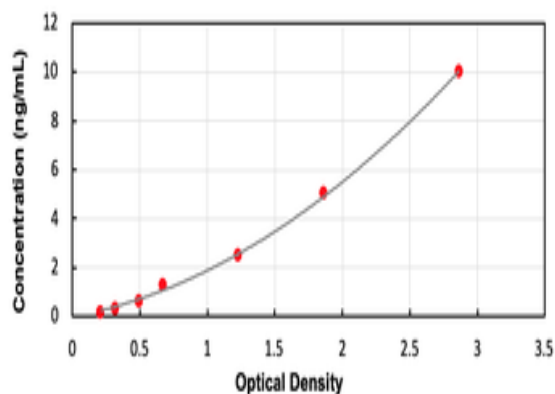
7 Signet Court, Swann Road
Cambridge
CB5 8LA
United Kingdom

Email: info@biorbyt.com, support@biorbyt.com
Phone: [+44 \(0\)1223 859353](tel:+44(0)1223859353) | Fax: [+1 \(415\) 651-8558](tel:+1(415)651-8558)

Biorbyt LLC

68 TW Alexander Drive
Research Triangle Park
Durham
NC 27713
United States

Email: info@biorbyt.com, support@biorbyt.com
Phone: [+1 \(415\) 906-5211](tel:+1(415)906-5211) | Fax: [+1 \(415\) 651-8558](tel:+1(415)651-8558)



Standard curve for orb438553 ELISA kit.

Biorbyt Ltd.

7 Signet Court, Swann Road
Cambridge
CB5 8LA
United Kingdom

Email: info@biorbyt.com, support@biorbyt.com

Phone: [+44 \(0\)1223 859353](tel:+44(0)1223859353) | Fax: [+1 \(415\) 651-8558](tel:+1(415)651-8558)

Biorbyt LLC

68 TW Alexander Drive
Research Triangle Park
Durham
NC 27713
United States

Email: info@biorbyt.com, support@biorbyt.com

Phone: [+1 \(415\) 906-5211](tel:+1(415)906-5211) | Fax: [+1 \(415\) 651-8558](tel:+1(415)651-8558)