

Product Datasheet

Rat bTG ELISA Kit (orb438253)

Catalog Number	orb438253
Category	Assays and Kits
Description	Rat Beta-Thromboglobulin (bTG) Sandwich ELISA Kit
Reactivity	Rat
Form/Appearance	Traditional
UniProt ID	Q63073
Assay Type	Sandwich
Assay Time	4.5 hours
Range	46.875-3000 pg/mL
Sensitivity	16.38 pg/mL
Sample Types	serum, plasma, tissue homogenates, cell lysates, cell culture supernatants and other biological fluids
Storage	TMB Substrate, Wash Buffer, Stop Solution at 4°C, all others at -20°C
Note	For research use only
Entrez	29618
Expiration Date	Please enquire.

Biorbyt Ltd.

7 Signet Court, Swann Road
Cambridge
CB5 8LA
United Kingdom

Email: info@biorbyt.com, support@biorbyt.com

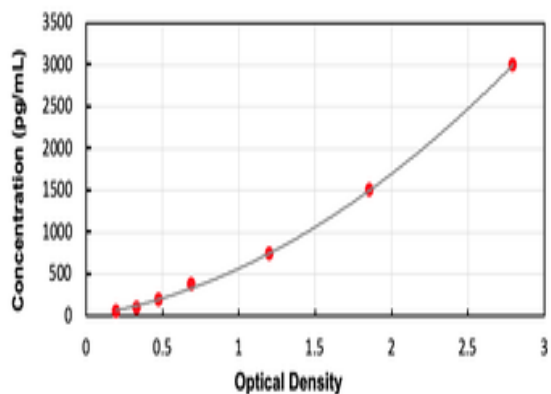
Phone: [+44 \(0\)1223 859353](tel:+44(0)1223859353) | Fax: [+1 \(415\) 651-8558](tel:+1(415)651-8558)

Biorbyt LLC

68 TW Alexander Drive
Research Triangle Park
Durham
NC 27713
United States

Email: info@biorbyt.com, support@biorbyt.com

Phone: [+1 \(415\) 906-5211](tel:+1(415)906-5211) | Fax: [+1 \(415\) 651-8558](tel:+1(415)651-8558)



Biorbyt Ltd.

7 Signet Court, Swann Road
Cambridge
CB5 8LA
United Kingdom

Email: info@biorbyt.com, support@biorbyt.com

Phone: [+44 \(0\)1223 859353](tel:+44(0)1223859353) | Fax: [+1 \(415\) 651-8558](tel:+1(415)651-8558)

Biorbyt LLC

68 TW Alexander Drive
Research Triangle Park
Durham
NC 27713
United States

Email: info@biorbyt.com, support@biorbyt.com

Phone: [+1 \(415\) 906-5211](tel:+1(415)906-5211) | Fax: [+1 \(415\) 651-8558](tel:+1(415)651-8558)