

## Product Datasheet

### beta2-Microglobulin Antibody (PE) (orb43657)

<b>Catalog Number</b>	orb43657
<b>Category</b>	Antibodies
<b>Description</b>	Mouse Monoclonal to beta 2 microglobulin.
<b>Target</b>	beta2-Microglobulin
<b>Clonality</b>	Monoclonal
<b>Isotype</b>	Mouse IgG2a
<b>Conjugation</b>	PE
<b>Reactivity</b>	Human
<b>Concentration</b>	0.1 mg/ml
<b>Buffer/Preservatives</b>	Stabilizing phosphate buffered saline (PBS), pH 7.4, 15 mM sodium azide
<b>Purification</b>	Purified antibody is conjugated with R-phycoerythrin (PE) under optimum conditions. Unconjugated antibody and free fluorochrome are removed by size-exclusion chromatography.
<b>Immunogen</b>	Purified human beta2-microglobulin
<b>UniProt ID</b>	<b>P61769</b>
<b>RRID</b>	AB_10996576
<b>Tested applications</b>	FC
<b>Application notes</b>	Flow cytometry: Recommended dilution: 1-2 µg/ml; positive control: peripheral blood lymphocytes, negative control: DAUDI human Burkitt lymphoma cell line, erythrocytes.

**Biorbyt Ltd.**

7 Signet Court, Swann Road  
Cambridge  
CB5 8LA  
United Kingdom

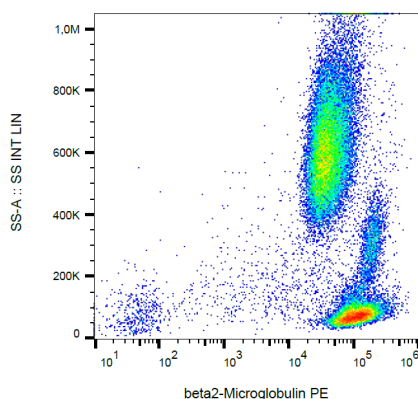
Email: [info@biorbyt.com](mailto:info@biorbyt.com), [support@biorbyt.com](mailto:support@biorbyt.com)  
Phone: [+44 \(0\)1223 859353](tel:+44(0)1223859353) | Fax: [+1 \(415\) 651-8558](tel:+1(415)651-8558)

**Biorbyt LLC**

68 TW Alexander Drive  
Research Triangle Park  
Durham  
NC 27713-2847  
United States

Email: [info@biorbyt.com](mailto:info@biorbyt.com), [support@biorbyt.com](mailto:support@biorbyt.com)  
Phone: [+1 \(415\) 906-5211](tel:+1(415)906-5211) | Fax: [+1 \(415\) 651-8558](tel:+1(415)651-8558)

<b>Specificity</b>	The mouse monoclonal antibody B2M-01 reacts with beta2-microglobulin (beta2M; extracellular antigen), associated with cell-surface MHC Class I molecules and other membrane antigens, as well as it reacts with soluble beta2-microglobulin. Beta2M is a 12 kDa Ig like glycoprotein expressed on lymphocytes, thymocytes, monocytes, granulocytes, platelets, endothelial cells and epithelial cells. It is absent on erythrocytes.
<b>Antibody Type</b>	Primary Antibody
<b>Clone Number</b>	B2M-01
<b>Storage</b>	Store at 2-8°C. Protect from prolonged exposure to light. Do not freeze.
<b>Note</b>	For research use only
<b>Entrez</b>	<b>567</b>
<b>Expiration Date</b>	12 months from date of receipt.



Flow cytometry analysis (surface staining) of  $\beta$ 2-microglobulin in human peripheral blood with anti- $\beta$ 2-microglobulin (B2M-01) PE.

**Biorbyt Ltd.**

7 Signet Court, Swann Road  
Cambridge  
CB5 8LA  
United Kingdom

Email: [info@biorbyt.com](mailto:info@biorbyt.com), [support@biorbyt.com](mailto:support@biorbyt.com)

Phone: +44 (0)1223 859353 | Fax: +1 (415) 651-8558

**Biorbyt LLC**

68 TW Alexander Drive  
Research Triangle Park  
Durham  
NC 27713-2847  
United States

Email: [info@biorbyt.com](mailto:info@biorbyt.com), [support@biorbyt.com](mailto:support@biorbyt.com)

Phone: +1 (415) 906-5211 | Fax: +1 (415) 651-8558