

Product Datasheet

CD68 Antibody (RPE) (orb434771)

Catalog Number	orb434771
Category	Antibodies
Description	Mouse monoclonal antibody against CD68 conjugated to RPE
Target	CD68
Clonality	Monoclonal
Species/Host	Mouse
Isotype	IgG1
Conjugation	RPE
Reactivity	Human
Form/Appearance	Purified IgG conjugated to R. Phycoerythrin (RPE) - lyophilized
Buffer/Preservatives	Preservative: 0.09% Sodium Azide (NaN ₃)1% Bovine Serum Albumin5% Sucrose; Buffer: Phosphate buffered saline
Purity	Purified IgG prepared by affinity chromatography on Protein G from tissue culture supernatant
Immunogen	Subcellular fraction of human alveolar macrophages
UniProt ID	P34810
MW	110 kDa
Tested applications	FC
Specificity	CD68

Biorbyt Ltd.

7 Signet Court, Swann Road
Cambridge
CB5 8LA
United Kingdom

Email: info@biorbyt.com, support@biorbyt.com

Phone: [+44 \(0\)1223 859353](tel:+44(0)1223859353) | Fax: [+1 \(415\) 651-8558](tel:+1(415)651-8558)

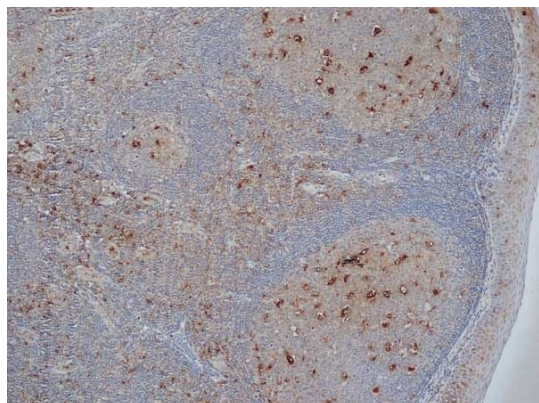
Biorbyt LLC

68 TW Alexander Drive
Research Triangle Park
Durham
NC 27713-2847
United States

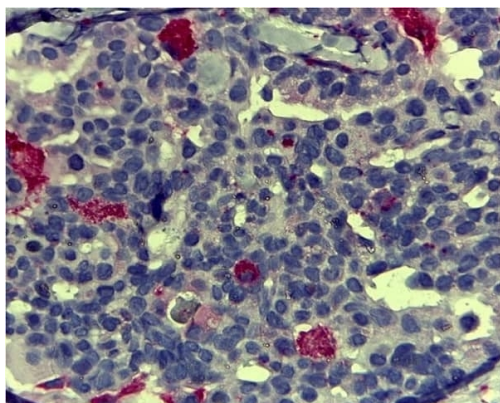
Email: info@biorbyt.com, support@biorbyt.com

Phone: [+1 \(415\) 906-5211](tel:+1(415)906-5211) | Fax: [+1 \(415\) 651-8558](tel:+1(415)651-8558)

Cross Reactivity	Primate,Rat
Antibody Type	Primary Antibody
Clone Number	KP1
Storage	Prior to reconstitution store at +4°C. After reconstitution store at +4°C. DO NOT FREEZE. This product should be stored undiluted. This product is photosensitive and should be protected from light. Should this product contain a precipitate we recommend micro-centrifugation before use.
Note	For research use only
Expiration Date	12 months from date of receipt.



Immunohistochemical staining of human tonsil using CD68 antibody (RPE).



Immunohistochemical staining of human breast carcinoma using CD68 antibody (RPE).

Biorbyt Ltd.

7 Signet Court, Swann Road
Cambridge
CB5 8LA
United Kingdom

Email: info@biorbyt.com, support@biorbyt.com

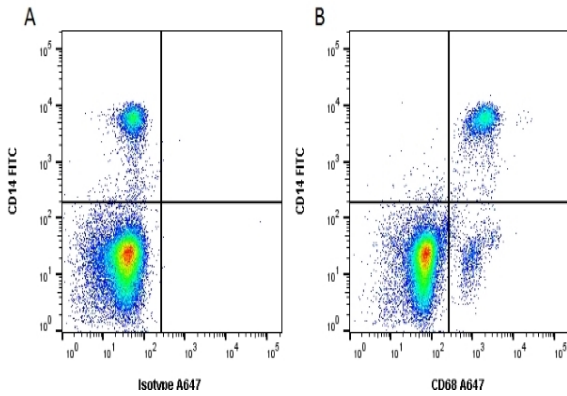
Phone: [+44 \(0\)1223 859353](tel:+44(0)1223859353) | Fax: [+1 \(415\) 651-8558](tel:+1(415)651-8558)

Biorbyt LLC

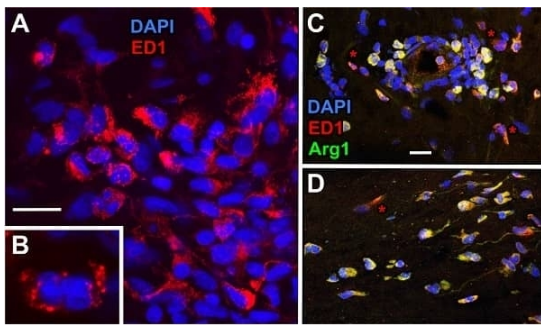
68 TW Alexander Drive
Research Triangle Park
Durham
NC 27713-2847
United States

Email: info@biorbyt.com, support@biorbyt.com

Phone: [+1 \(415\) 906-5211](tel:+1(415)906-5211) | Fax: [+1 \(415\) 651-8558](tel:+1(415)651-8558)



Flow cytometric analysis of Human CD14 using CD68 antibody (RPE).



Immunofluorescence analysis of optic nerve tissue using CD68 antibody (RPE).

Citation: Blanco RE, Vega-Meléndez GS, De La Rosa-Reyes V, del Cueto C, Blagburn JM (2019) Application of CNTF or FGF-2 increases the number of M2-like macrophages after optic nerve injury in adult *Rana pipiens*. PLoS ONE 14(5): e0209733. doi: 10.1371/journal.pone.0209733



Biorbyt Ltd.

7 Signet Court, Swann Road
Cambridge
CB5 8LA
United Kingdom

Email: info@biorbyt.com, support@biorbyt.com

Phone: +44 (0)1223 859353 | Fax: +1 (415) 651-8558

Biorbyt LLC

68 TW Alexander Drive
Research Triangle Park
Durham
NC 27713-2847
United States

Email: info@biorbyt.com, support@biorbyt.com

Phone: +1 (415) 906-5211 | Fax: +1 (415) 651-8558