

Product Datasheet

Lysine Acetylated Antibody Biotin Conjugated (orb420484)

Description	Lysine Acetylated antibody (Biotin)
Species/Host	Rabbit
Conjugation	Biotin
Tested Applications	ELISA, WB
Immunogen	This affinity-purified antibody was prepared from whole rabbit serum produced by repeated immunizations with acetylated lysine conjugated KLH.
Preservatives	None
Form/Appearance	Liquid (sterile filtered)
Concentration	1 mg/mL
Storage	Store vial at -20° C or below prior to opening. Dilute only prior to immediate use. For extended storage, aliquot contents and freeze at -20° C or below. Avoid cycles of freezing and thawing.
Note	For research use only
Application notes	This affinity-purified antibody is suitable for use in ELISA and western blotting assays. The antibody reacts specifically with acetylated lysine residues. Although not tested, this antibody is likely functional in RIA, flow cytometry and immunohistochemistry.
Isotype	IgG
Clonality	Polyclonal
Antibody Type	Primary Antibody

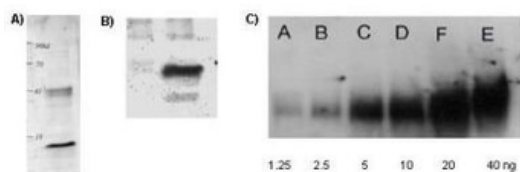
Biorbyt Ltd.

7 Signet Court, Swann's Road,
Cambridge, CB5 8LA, United Kingdom
Email: info@biorbyt.com, support@biorbyt.com
Phone: [+44 \(0\) 1223 859-353](tel:+44(0)1223859353) | Fax: [+1 \(415\) 651-8558](tel:+1(415)6518558)

Biorbyt LLC.

68 TW Alexander Drive,
Durham, NC, 27713, United States
Email: info@biorbyt.com, support@biorbyt.com
Phone: [+1 \(415\) 906-5211](tel:+1(415)9065211) | Fax: [+1 \(415\) 651-8558](tel:+1(415)6518558)

Purity	Anti-AcK was prepared from monospecific antiserum by immunoaffinity chromatography using acetylated lysine peptide coupled to agarose followed by conjugation to biotin and subsequent purification. Assay by immunoelectrophoresis resulted in a single precipitin arc against anti-Rabbit IgG and anti-Biotin. Reactivity is specific for acetylated lysine.
Dilution Range	ELISA: 1:5,000, WB: 1:1,000-1:5,000
Expiration Date	12 months from date of receipt.



Biorbyt's Affinity Purified anti-Acetylated Lysine (AcK) antibody is shown to detect acetylated histone in TSA-treated mouse spleen cell lysate (Panel A); control (left lane) and TSA-treated mouse spleen cell lysate (right lane) in panel B; and in acetylated BSA loaded as indicated (panel C).

Biorbyt Ltd.

7 Signet Court, Swann's Road,
Cambridge, CB5 8LA, United Kingdom
Email: info@biorbyt.com, support@biorbyt.com
Phone: [+44 \(0\) 1223 859-353](tel:+44(0)1223859353) | Fax: [+1 \(415\) 651-8558](tel:+1(415)6518558)

Biorbyt LLC.

68 TW Alexander Drive,
Durham, NC, 27713, United States
Email: info@biorbyt.com, support@biorbyt.com
Phone: [+1 \(415\) 906-5211](tel:+1(415)9065211) | Fax: [+1 \(415\) 651-8558](tel:+1(415)6518558)