

Product Datasheet

VHH Antibody (orb420273)

Catalog Number	orb420273
Category	Antibodies
Description	VhH antibody
Clonality	Polyclonal
Species/Host	Rabbit
Isotype	IgG
Conjugation	Unconjugated
Reactivity	Camelus
Form/Appearance	Liquid (sterile filtered)
Concentration	1.3 mg/mL
Buffer/Preservatives	Preservative: 0.01% (w/v) Sodium Azide. Stabilizer: None; Buffer: 0.02 M Potassium Phosphate, 0.15 M Sodium Chloride, pH 7.2
Purity	Anti-VHH is directed against the llama VHH protein fragment. The product was purified from monospecific antiserum by protein A chromatography. Anti-VHH antibody detects recombinant VHH proteins, native Llama IgG2 and native Llama IgG3.
Immunogen	This antibody was prepared from whole rabbit serum produced by repeated immunizations with a VHH camelid domain protein.
Tested applications	ELISA, WB
Dilution range	ELISA: 1:10,000-1:50,000, WB: 1:1,000-1:5,000

Biorbyt Ltd.

7 Signet Court, Swann Road
Cambridge
CB5 8LA
United Kingdom

Email: info@biorbyt.com, support@biorbyt.com
Phone: [+44 \(0\)1223 859353](tel:+44(0)1223859353) | Fax: [+1 \(415\) 651-8558](tel:+1(415)651-8558)

Biorbyt LLC

68 TW Alexander Drive
Research Triangle Park
Durham
NC 27713-2847
United States

Email: info@biorbyt.com, support@biorbyt.com
Phone: [+1 \(415\) 906-5211](tel:+1(415)906-5211) | Fax: [+1 \(415\) 651-8558](tel:+1(415)651-8558)

Application notes

Anti-VhH antibody has been tested by ELISA and Western Blot. Specific conditions for reactivity should be optimized by the end user. Some cross-reactivity to E.coli proteins may be observed.

Antibody Type

Secondary Antibody

Storage

Store vial at -20° C or below prior to opening. This vial contains a relatively low volume of reagent (25 µL). To minimize loss of volume dilute 1:10 by adding 225 µL of the buffer stated above directly to the vial. Recap, mix thoroughly and briefly centrifuge to collect the volume at the bottom of the vial. Use this intermediate dilution when calculating final dilutions as recommended below. Store the vial at -20°C or below after dilution. Avoid cycles of freezing and thawing.

Dry Ice Shipping

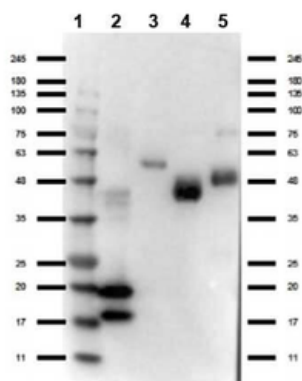
Please note: This product requires shipment on dry ice. A dry ice surcharge will apply.

Note

For research use only

Expiration Date

12 months from date of receipt.



Western Blot of Rabbit anti-VHH antibody. Lane 1: Ladder (Opal Prestained). Lane 2: VHH protein. Lane 3: Llama IgG1 protein (p/n orb343832). Lane 4: Llama IgG2 protein (p/n orb343834). Lane 5: Llama IgG3 protein (p/n orb343833). Load: 50 ng per lane. Primary antibody: VHH antibody at 1:1000 for overnight at 4°C. Secondary antibody: Gt-a-Rb HRP (orb347654) rabbit secondary antibody at 1:70000 for 30 min at RT. Block: orb348637 for 30 min at RT. Predicted/Observed size: expect 15 and 18 kda band in VHH protein and reactivity with Llama IgG isotypes.

Biorbyt Ltd.

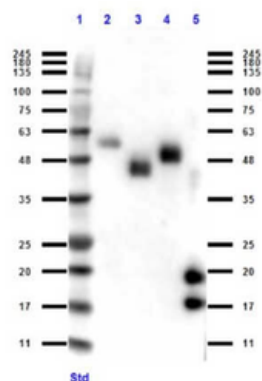
7 Signet Court, Swann Road
Cambridge
CB5 8LA
United Kingdom

Email: info@biorbyt.com, support@biorbyt.com
Phone: +44 (0)1223 859353 | Fax: +1 (415) 651-8558

Biorbyt LLC

68 TW Alexander Drive
Research Triangle Park
Durham
NC 27713-2847
United States

Email: info@biorbyt.com, support@biorbyt.com
Phone: +1 (415) 906-5211 | Fax: +1 (415) 651-8558



Western Blot of Rabbit anti-VHH antibody. Lane 1: MW ladder (opal pre-stained). Lane 2: Llama IgG1 protein (p/n orb343832). Lane 3: Llama IgG2 protein (p/n orb343834). Lane 4: Llama IgG3 protein (p/n orb343833). Lane 5: VhH protein. Load: 50 ng per lane. Primary antibody: VHH antibody at 1:1000 for overnight at 4°C. Secondary antibody: rabbit secondary HRP antibody (p/n orb347654) at 1:40000 for 45 min at RT. Block: BlockOut (p/n orb348637) overnight at 4°C. Predicted/Observed size: expect 15 and 18 kda band in VHH protein and reactivity with Llama IgG isotypes.

Biorbyt Ltd.

7 Signet Court, Swann Road
Cambridge
CB5 8LA
United Kingdom

Email: info@biorbyt.com, support@biorbyt.com

Phone: [+44 \(0\)1223 859353](tel:+44(0)1223859353) | Fax: [+1 \(415\) 651-8558](tel:+1(415)651-8558)

Biorbyt LLC

68 TW Alexander Drive
Research Triangle Park
Durham
NC 27713-2847
United States

Email: info@biorbyt.com, support@biorbyt.com

Phone: [+1 \(415\) 906-5211](tel:+1(415)906-5211) | Fax: [+1 \(415\) 651-8558](tel:+1(415)651-8558)