

Product Datasheet

Bacterial MGLB protein (orb418848)

Catalog Number	orb418848
Category	Proteins
Description	This Bacterial MGLB protein spans the amino acid sequence from region 24-332aa. Purity: Greater than 90% as determined by SDS-PAGE.
Tag	N-terminal 10xHis-tagged
Form/Appearance	Liquid or Lyophilized powder
Buffer/Preservatives	If the delivery form is liquid, the default storage buffer is Tris/PBS-based buffer, 5%-50% glycerol. If the delivery form is lyophilized powder, the buffer before lyophilization is Tris/PBS-based buffer, 6% Trehalose, pH 8.0.
Purity	Greater than 90% as determined by SDS-PAGE.
Protein Sequence	ADTRIGVTIYKYDDNFMSVVRKAIEKDGKSAPDVQLLMNDSQNDQSKQNDQIDVLLAKGV KALAINLVDPAAGTVIEKARGQNVVFFNKEPSRKALDSYDKAYVGTDSKESGVIQGD IAKHWQANQGWDLNKDGKIQYVLLKGEPGHPDAEARTTYVVKELNDKGIQTEQLALDTAM WDTAQAKDKMDAWLSGPNANKIEVVIANNNDAMAMGAVEALKAHNKSSIPVFGVDALPEAL ALVKSGAMAGTVLNDANNQAKATFDLAKNLAEGKGAADGTSWKIENKIVRVPYVGVDKDN LSEFTQK
Protein Length	Full Length of Mature Protein
UniProt ID	P23905
MW	35.9 kDa
Application notes	Tag Info: N-terminal 10xHis-tagged Expression Region: 24-332aa Sequence Info: Full Length of Mature Protein
Source	Yeast

Biorbyt Ltd.

7 Signet Court, Swann Road
Cambridge
CB5 8LA
United Kingdom

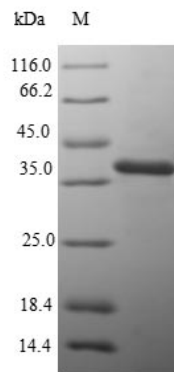
Email: info@biorbyt.com, support@biorbyt.com
Phone: +44 (0)1223 859353 | Fax: +1 (415) 651-8558

Biorbyt LLC

68 TW Alexander Drive
Research Triangle Park
Durham
NC 27713-2847
United States

Email: info@biorbyt.com, support@biorbyt.com
Phone: +1 (415) 906-5211 | Fax: +1 (415) 651-8558

Biological Origin	Salmonella typhimurium (strain LT2 / SGSC1412 / ATCC 700720)
Expression Region	24-332aa
Storage	The shelf life is related to many factors, storage state, buffer ingredients, storage temperature and the stability of the protein itself. Generally, the shelf life of liquid form is 6 months at -20°C/-80°C. The shelf life of lyophilized form is 12 months at -20°C/-80°C.
Note	For research use only
Expiration Date	6 months from date of receipt.



(Tris-Glycine gel) Discontinuous SDS-PAGE (reduced) with 5% enrichment gel and 15% separation gel.

Biorbyt Ltd.

7 Signet Court, Swann Road
Cambridge
CB5 8LA
United Kingdom

Email: info@biorbyt.com, support@biorbyt.com

Phone: [+44 \(0\)1223 859353](tel:+44(0)1223859353) | Fax: [+1 \(415\) 651-8558](tel:+1(415)651-8558)

Biorbyt LLC

68 TW Alexander Drive
Research Triangle Park
Durham
NC 27713-2847
United States

Email: info@biorbyt.com, support@biorbyt.com

Phone: [+1 \(415\) 906-5211](tel:+1(415)906-5211) | Fax: [+1 \(415\) 651-8558](tel:+1(415)651-8558)