

## Product Datasheet

### Bacterial MGLB protein (orb418847)

<b>Catalog Number</b>	orb418847
<b>Category</b>	Proteins
<b>Description</b>	This Bacterial MGLB protein spans the amino acid sequence from region 24-332aa. Purity: Greater than 90% as determined by SDS-PAGE.
<b>Tag</b>	N-terminal 6xHis-tagged
<b>Form/Appearance</b>	Liquid or Lyophilized powder
<b>Buffer/Preservatives</b>	If the delivery form is liquid, the default storage buffer is Tris/PBS-based buffer, 5%-50% glycerol. If the delivery form is lyophilized powder, the buffer before lyophilization is Tris/PBS-based buffer, 6% Trehalose, pH 8.0.
<b>Purity</b>	Greater than 90% as determined by SDS-PAGE.
<b>Protein Sequence</b>	ADTRIGVTIYKYDDNFMSVVRKAIEKDGKSAPDVQLLMNDSQNDQSKQNDQIDVLLAKGV KALAINLVDPAAGTVIEKARGQNVVFFNKEPSRKALDSYDKAYVGTDSKESGVIQGD IAKHWQANQGWDLNKDGKIQYVLLKGEPGHPDAEARTTYVVKELNDKGIQTEQLALDTAM WDTAQAKDKMDAWLSGPNANKIEVVIANNNDAMAMGAVEALKAHNKSSIPVFGVDALPEAL ALVKSGAMAGTVLNDANNQAKATFDLAKNLAEGKGAADGTSWKIENKIVRVPYVGVDKDN LSEFTQK
<b>Protein Length</b>	Full Length of Mature Protein
<b>UniProt ID</b>	<b>P23905</b>
<b>MW</b>	35.4 kDa
<b>Application notes</b>	Tag Info: N-terminal 6xHis-tagged Expression Region: 24-332aa Sequence Info: Partial
<b>Source</b>	Yeast

**Biorbyt Ltd.**

7 Signet Court, Swann Road  
Cambridge  
CB5 8LA  
United Kingdom

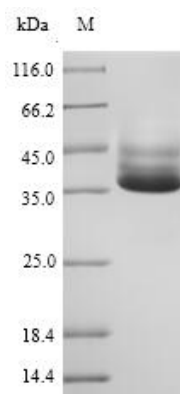
Email: [info@biorbyt.com](mailto:info@biorbyt.com), [support@biorbyt.com](mailto:support@biorbyt.com)  
Phone: +44 (0)1223 859353 | Fax: +1 (415) 651-8558

**Biorbyt LLC**

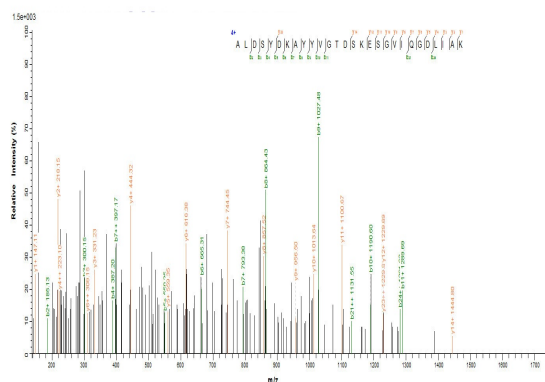
68 TW Alexander Drive  
Research Triangle Park  
Durham  
NC 27713-2847  
United States

Email: [info@biorbyt.com](mailto:info@biorbyt.com), [support@biorbyt.com](mailto:support@biorbyt.com)  
Phone: +1 (415) 906-5211 | Fax: +1 (415) 651-8558

<b>Biological Origin</b>	Salmonella typhimurium (strain LT2 / SGSC1412 / ATCC 700720)
<b>Expression Region</b>	24-332aa
<b>Storage</b>	The shelf life is related to many factors, storage state, buffer ingredients, storage temperature and the stability of the protein itself. Generally, the shelf life of liquid form is 6 months at -20°C/-80°C. The shelf life of lyophilized form is 12 months at -20°C/-80°C.
<b>Note</b>	For research use only
<b>Expiration Date</b>	6 months from date of receipt.



(Tris-Glycine gel) Discontinuous SDS-PAGE (reduced) with 5% enrichment gel and 15% separation gel.



Based on the SEQUEST from database of Yeast host and target protein, the LC-MS/MS Analysis result could indicate that this peptide derived from Yeast-expressed Salmonella typhimurium (strain LT2 / SGSC1412 / ATCC 700720) mgIB.

**Biorbyt Ltd.**

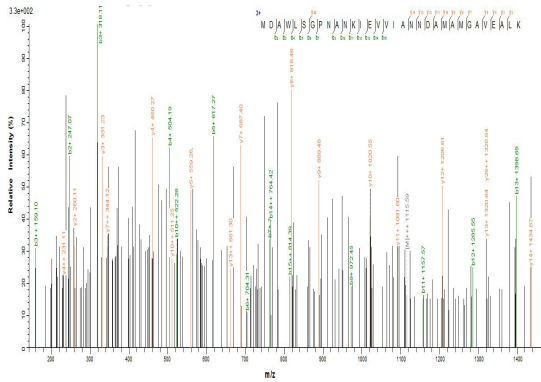
7 Signet Court, Swann Road  
Cambridge  
CB5 8LA  
United Kingdom

Email: [info@biorbyt.com](mailto:info@biorbyt.com), [support@biorbyt.com](mailto:support@biorbyt.com)  
Phone: +44 (0)1223 859353 | Fax: +1 (415) 651-8558

**Biorbyt LLC**

68 TW Alexander Drive  
Research Triangle Park  
Durham  
NC 27713-2847  
United States

Email: [info@biorbyt.com](mailto:info@biorbyt.com), [support@biorbyt.com](mailto:support@biorbyt.com)  
Phone: +1 (415) 906-5211 | Fax: +1 (415) 651-8558



Based on the SEQUEST from database of Yeast host and target protein, the LC-MS/MS Analysis result could indicate that this peptide derived from Yeast-expressed Salmonella typhimurium (strain LT2 / SGSC1412 / ATCC 700720) mgIB.

**Biorbyt Ltd.**

7 Signet Court, Swann Road  
Cambridge  
CB5 8LA  
United Kingdom

Email: [info@biorbyt.com](mailto:info@biorbyt.com), [support@biorbyt.com](mailto:support@biorbyt.com)  
Phone: [+44 \(0\)1223 859353](tel:+44(0)1223859353) | Fax: [+1 \(415\) 651-8558](tel:+1(415)6518558)

**Biorbyt LLC**

68 TW Alexander Drive  
Research Triangle Park  
Durham  
NC 27713-2847  
United States

Email: [info@biorbyt.com](mailto:info@biorbyt.com), [support@biorbyt.com](mailto:support@biorbyt.com)  
Phone: [+1 \(415\) 906-5211](tel:+1(415)9065211) | Fax: [+1 \(415\) 651-8558](tel:+1(415)6518558)