

Product Datasheet

Alpha Synuclein (pSer129) Antibody (orb414125)

Catalog Number	orb414125
Category	Antibodies
Description	Rabbit polyclonal antibody to Alpha Synuclein pSer129
Target	Alpha Synuclein pSer129
Clonality	Polyclonal
Species/Host	Rabbit
Conjugation	Unconjugated
Reactivity	Human, Mouse, Rat
Concentration	0.5mg/mL
Buffer/Preservatives	PBS pH 7.4, 50% glycerol, 0.09% sodium azide Storage buffer changes when conjugated
Purification	Peptide Affinity Purified
Immunogen	Synthetic peptide of Human Alpha Synuclein pSer129 (124-134 aa), conjugated to Keyhole Limpet Haemocyanin (KLH).
UniProt ID	P37840
MW	100, 75, 45, 15 kDa
Tested applications	ELISA, ICC, IF, IHC, WB
Dilution range	WB (1:1000); ICC/IF (1:500)

Biorbyt Ltd.

7 Signet Court, Swann Road
Cambridge
CB5 8LA
United Kingdom

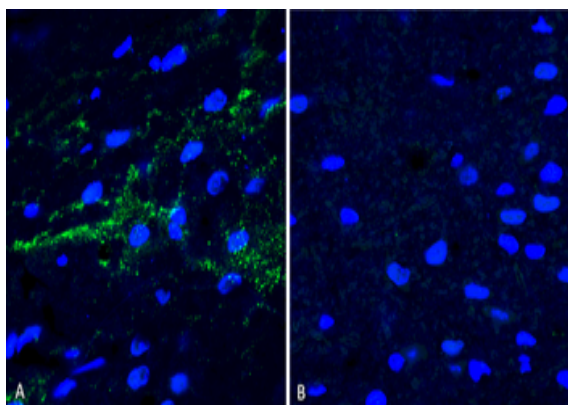
Email: info@biorbyt.com, support@biorbyt.com
Phone: [+44 \(0\)1223 859353](tel:+44(0)1223859353) | Fax: [+1 \(415\) 651-8558](tel:+1(415)651-8558)

Biorbyt LLC

68 TW Alexander Drive
Research Triangle Park
Durham
NC 27713
United States

Email: info@biorbyt.com, support@biorbyt.com
Phone: [+1 \(415\) 906-5211](tel:+1(415)906-5211) | Fax: [+1 \(415\) 651-8558](tel:+1(415)651-8558)

Application notes	A 1:1000 dilution was sufficient for detection of Alpha Synuclein pSer129 in 15 µg of human brain cell lysates by ECL immunoblot analysis using goat anti-rabbit IgG:HRP as the secondary antibody.
Specificity	Binds to phosphorylated serine 129 on alpha synuclein. Does not detect unphosphorylated serine 129 alpha synuclein. Detects bands at 100, 75, 45, 15 kDa. Bands above 15 kDa are oligomers.
Storage	Maintain refrigerated at 2-8°C for up to 2 weeks. For long term storage store at -20°C in small aliquots to prevent freeze-thaw cycles.
Note	For research use only
Entrez	6622
NCBI	NP_000336.1
Expiration Date	12 months from date of receipt.



Immunohistochemistry analysis using Rabbit Anti-Alpha Synuclein (pSer129) Polyclonal Antibody. Tissue: Free floating brain sections. Species: Mouse. Fixation: PFA. Primary Antibody: Rabbit Anti-Alpha Synuclein (pSer129) Polyclonal Antibody at 1:500 for overnight at 4°C with gentle agitation. Counterstain: Hoechst. Magnification: 63X. A) Right hemisphere (striatum) injected with alpha synuclein AAV vector. B) Control. Alpha synuclein streaks are visible at injection site, but not control, 4 months after injection.

Biorbyt Ltd.

7 Signet Court, Swann Road
Cambridge
CB5 8LA
United Kingdom

Email: info@biorbyt.com, support@biorbyt.com

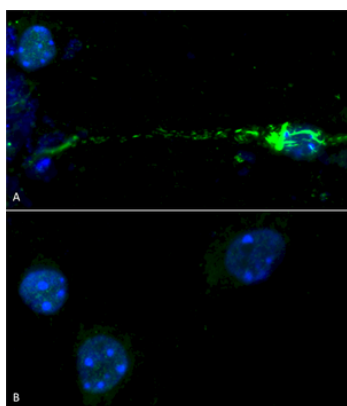
Phone: +44 (0)1223 859353 | Fax: +1 (415) 651-8558

Biorbyt LLC

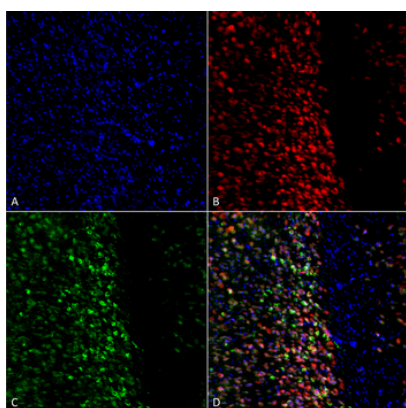
68 TW Alexander Drive
Research Triangle Park
Durham
NC 27713
United States

Email: info@biorbyt.com, support@biorbyt.com

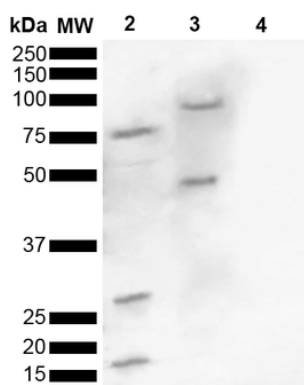
Phone: +1 (415) 906-5211 | Fax: +1 (415) 651-8558



Immunocytochemistry/Immunofluorescence analysis using Rabbit Anti-Alpha Synuclein (pSer129) Polyclonal Antibody. Species: Mouse. Primary Antibody: Rabbit Anti-Alpha Synuclein (pSer129) Polyclonal Antibody. Phospho serine 129 antibody was used to detect phosphorylated alpha synuclein in primary mouse hippocampal neurons treated with 100 nM sonicated mouse alpha synuclein PFFs (A). Phosphorylated alpha synuclein was visible in perinucleus and neurites compared to untreated control (B).



Immunocytochemistry/Immunofluorescence analysis using Rabbit Anti-Alpha Synuclein pSer129 Polyclonal Antibody. Tissue: Primary hippocampal neurons treated with active Alpha Synuclein Protein Aggregate at 4 µg/ml to induce fibrils. Species: Rat. Fixation: 4% paraformaldehyde. Primary Antibody: Rabbit Anti-Alpha Synuclein pSer129 Polyclonal Antibody at 1:500 for 24 hours at 4°C. Secondary Antibody: Goat Anti-Rabbit Alexa Fluor 488 at 1:700 for 1 hour at RT. Counterstain: Guinea Pig Anti-NeuN (red) neuronal marker (Donkey Anti-Guinea Pig Alexa Fluor 647 1:700); Hoechst (blue) nuclear stain at 1:6000, 1:3000 for 60 min at RT, 5 min at RT. Magnification: 20X.



Western blot analysis of Human, Mouse brain lysate showing detection of ~16 kDa Alpha Synuclein pSer129 protein using Rabbit Anti-Alpha Synuclein pSer129 Polyclonal Antibody. Lane 1: Molecular Weight Ladder (MW). Lane 2: Human brain lysate. Lane 3: Mouse brain lysate. Lane 4: Human Alpha Synuclein Monomer (0.5 µg). Load: 15 µg. Block: 5% Skim Milk in 1X TBST. Primary Antibody: Rabbit Anti-Alpha Synuclein pSer129 Polyclonal Antibody at 1:1000 for 2 hours at RT. Secondary Antibody: Goat Anti-Rabbit HRP:IgG at 1:3000 for 1 hour at RT. Color Development: ECL solution for 5 min at RT. Predicted/Observed Size: ~16 kDa. Other Band (s): 100, 75, 45, 30, 16 kDa.

Biorbyt Ltd.

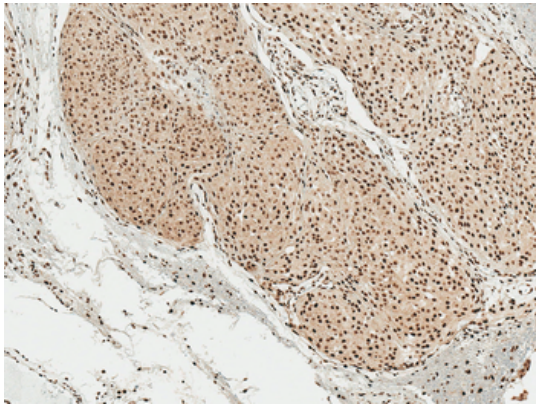
7 Signet Court, Swann Road
Cambridge
CB5 8LA
United Kingdom

Email: info@biorbyt.com, support@biorbyt.com
Phone: +44 (0)1223 859353 | Fax: +1 (415) 651-8558

Biorbyt LLC

68 TW Alexander Drive
Research Triangle Park
Durham
NC 27713
United States

Email: info@biorbyt.com, support@biorbyt.com
Phone: +1 (415) 906-5211 | Fax: +1 (415) 651-8558



Immunohistochemistry analysis using Rabbit Anti-Alpha Synuclein pSer129 Polyclonal Antibody. Tissue: Brain. Species: Human. Fixation: Formalin Fixed Paraffin-Embedded. Primary Antibody: Rabbit Anti-Alpha Synuclein pSer129 Polyclonal Antibody at 1:50 for 30 min at RT. Counterstain: Hematoxylin. Magnification: 10X. HRP-DAB Detection.

Biorbyt Ltd.

7 Signet Court, Swann Road
Cambridge
CB5 8LA
United Kingdom

Email: info@biorbyt.com, support@biorbyt.com

Phone: [+44 \(0\)1223 859353](tel:+44(0)1223859353) | Fax: [+1 \(415\) 651-8558](tel:+1(415)651-8558)

Biorbyt LLC

68 TW Alexander Drive
Research Triangle Park
Durham
NC 27713
United States

Email: info@biorbyt.com, support@biorbyt.com

Phone: [+1 \(415\) 906-5211](tel:+1(415)906-5211) | Fax: [+1 \(415\) 651-8558](tel:+1(415)651-8558)