

## Product Datasheet

### KDEL Antibody (FITC) (orb413471)

<b>Catalog Number</b>	orb413471
<b>Category</b>	Antibodies
<b>Description</b>	Mouse monoclonal antibody against KDEL conjugated to FITC
<b>Target</b>	KDEL
<b>Clonality</b>	Monoclonal
<b>Species/Host</b>	Mouse
<b>Isotype</b>	IgG1
<b>Conjugation</b>	FITC
<b>Reactivity</b>	Human, Mouse, Rat
<b>Concentration</b>	1 mg/ml
<b>Buffer/Preservatives</b>	640.91mM DMSO, 136.36 mM Ethanolamine, 126.89 mM chlorides, 9.09mM phosphates, 9.09mM NaHCO <sub>3</sub>
<b>Purification</b>	Protein G Purified
<b>Immunogen</b>	KDEL peptide (C-AVKDEL -COOH) conjugated at the N-terminal to Bovine Serum Albumin (BSA)
<b>Tested applications</b>	IHC, WB
<b>Dilution range</b>	WB (1:1000); IHC (1:25)
<b>Application notes</b>	A 1:1000 dilution was sufficient for detection of KDEL in 10 µg of HeLa cell lysates by ECL immunoblot analysis using goat anti-mouse IgG:HRP as the secondary antibody.

#### Biorbyt Ltd.

7 Signet Court, Swann Road  
Cambridge  
CB5 8LA  
United Kingdom

Email: [info@biorbyt.com](mailto:info@biorbyt.com), [support@biorbyt.com](mailto:support@biorbyt.com)

Phone: [+44 \(0\)1223 859353](tel:+44(0)1223859353) | Fax: [+1 \(415\) 651-8558](tel:+1(415)651-8558)

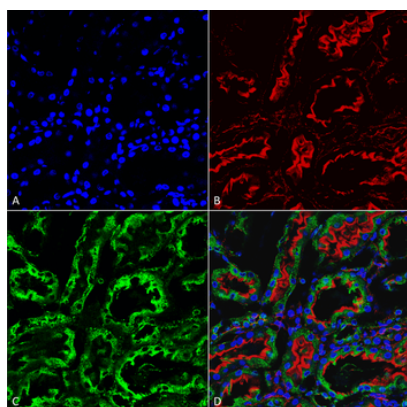
#### Biorbyt LLC

68 TW Alexander Drive  
Research Triangle Park  
Durham  
NC 27713-2847  
United States

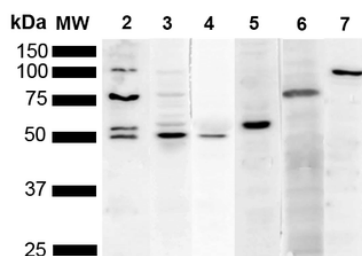
Email: [info@biorbyt.com](mailto:info@biorbyt.com), [support@biorbyt.com](mailto:support@biorbyt.com)

Phone: [+1 \(415\) 906-5211](tel:+1(415)906-5211) | Fax: [+1 \(415\) 651-8558](tel:+1(415)651-8558)

<b>Specificity</b>	Detects KDEL tagged proteins.
<b>Clone Number</b>	2C1
<b>Storage</b>	Conjugated antibodies should be stored according to the product label
<b>Note</b>	For research use only
<b>Expiration Date</b>	12 months from date of receipt.



Immunohistochemistry analysis using Mouse Anti-KDEL Monoclonal Antibody, Clone 2C1. Tissue: kidney. Species: Rat. Fixation: Formalin fixed, paraffin embedded. Primary Antibody: Mouse Anti-KDEL Monoclonal Antibody at 1:25 for 1 hour at RT. Secondary Antibody: Goat Anti-Mouse IgG: Alexa Fluor 488. Counterstain: Actin-binding Phalloidin-Alexa Fluor 633; DAPI (blue) nuclear stain. Magnification: 63X. (A) DAPI (blue) nuclear stain. (B) Phalloidin Alexa Fluor 633 F-Actin stain. (C) KDEL Antibody (D) Composite.



Western Blot analysis of Human Cervical cancer cell line (HeLa) lysate showing detection of Multiple KDEL protein using Mouse Anti-KDEL Monoclonal Antibody, Clone 2C1. Lane 1: Molecular Weight Ladder (MW). Lane 2: Anti-KDEL. Lane 3: Anti-KDEL control. Lane 4: Anti-PDI control. Lane 5: Anti-Calreticulin control. Lane 6: Anti-GRP78 control. Lane 7: Anti-GRP94 control. Load: 10 µg. Block: 5% Skim Milk powder in TBST. Primary Antibody: Mouse Anti-KDEL Monoclonal Antibody at 1:1000 for 2 hours at RT. Secondary Antibody: Goat Anti-Mouse IgG:HRP at 1:5000 for 1 hour at RT. Color Development: ECL solution for 5 min in RT. Predicted/Observed Size: Multiple.

**Biorbyt Ltd.**

7 Signet Court, Swann Road  
Cambridge  
CB5 8LA  
United Kingdom

Email: [info@biorbyt.com](mailto:info@biorbyt.com), [support@biorbyt.com](mailto:support@biorbyt.com)  
Phone: +44 (0)1223 859353 | Fax: +1 (415) 651-8558

**Biorbyt LLC**

68 TW Alexander Drive  
Research Triangle Park  
Durham  
NC 27713-2847  
United States

Email: [info@biorbyt.com](mailto:info@biorbyt.com), [support@biorbyt.com](mailto:support@biorbyt.com)  
Phone: +1 (415) 906-5211 | Fax: +1 (415) 651-8558