

Product Datasheet

KDEL Antibody (Biotin) (orb413470)

Catalog Number	orb413470
Category	Antibodies
Description	Mouse monoclonal antibody against KDEL conjugated to Biotin
Target	KDEL
Clonality	Monoclonal
Species/Host	Mouse
Isotype	IgG1
Conjugation	Biotin
Reactivity	Human, Mouse, Rat
Concentration	1 mg/ml
Buffer/Preservatives	136.36mM Ethanolamine, 133.23 mM Chlorides, 9.55mM Phosphates, 9.55mM Sodium Bicarbonate
Purification	Protein G Purified
Immunogen	KDEL peptide (C-AVKDEL -COOH) conjugated at the N-terminal to Bovine Serum Albumin (BSA)
Tested applications	IHC, WB
Dilution range	WB (1:1000); IHC (1:25)
Application notes	A 1:1000 dilution was sufficient for detection of KDEL in 10 µg of HeLa cell lysates by ECL immunoblot analysis using goat anti-mouse IgG:HRP as the secondary antibody.

Biorbyt Ltd.

7 Signet Court, Swann Road
Cambridge
CB5 8LA
United Kingdom

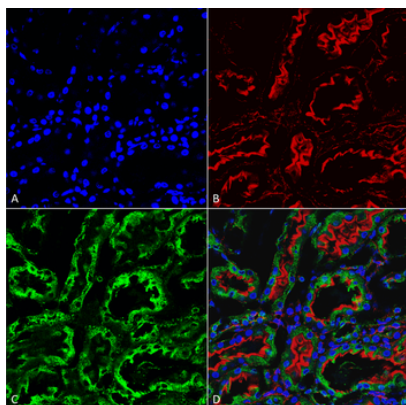
Email: info@biorbyt.com, support@biorbyt.com
Phone: [+44 \(0\)1223 859353](tel:+44(0)1223859353) | Fax: [+1 \(415\) 651-8558](tel:+1(415)651-8558)

Biorbyt LLC

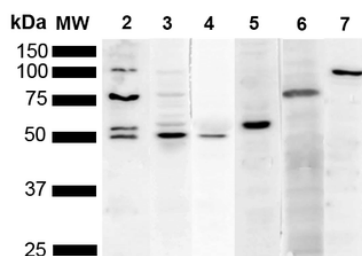
68 TW Alexander Drive
Research Triangle Park
Durham
NC 27713-2847
United States

Email: info@biorbyt.com, support@biorbyt.com
Phone: [+1 \(415\) 906-5211](tel:+1(415)906-5211) | Fax: [+1 \(415\) 651-8558](tel:+1(415)651-8558)

Specificity	Detects KDEL tagged proteins.
Clone Number	2C1
Storage	Conjugated antibodies should be stored according to the product label
Note	For research use only
Expiration Date	12 months from date of receipt.



Immunohistochemistry analysis using Mouse Anti-KDEL Monoclonal Antibody, Clone 2C1. Tissue: kidney. Species: Rat. Fixation: Formalin fixed, paraffin embedded. Primary Antibody: Mouse Anti-KDEL Monoclonal Antibody at 1:25 for 1 hour at RT. Secondary Antibody: Goat Anti-Mouse IgG: Alexa Fluor 488. Counterstain: Actin-binding Phalloidin-Alexa Fluor 633; DAPI (blue) nuclear stain. Magnification: 63X. (A) DAPI (blue) nuclear stain. (B) Phalloidin Alexa Fluor 633 F-Actin stain. (C) KDEL Antibody (D) Composite.



Western Blot analysis of Human Cervical cancer cell line (HeLa) lysate showing detection of Multiple KDEL protein using Mouse Anti-KDEL Monoclonal Antibody, Clone 2C1. Lane 1: Molecular Weight Ladder (MW). Lane 2: Anti-KDEL. Lane 3: Anti-KDEL control. Lane 4: Anti-PDI control. Lane 5: Anti-Calreticulin control. Lane 6: Anti-GRP78 control. Lane 7: Anti-GRP94 control. Load: 10 µg. Block: 5% Skim Milk powder in TBST. Primary Antibody: Mouse Anti-KDEL Monoclonal Antibody at 1:1000 for 2 hours at RT. Secondary Antibody: Goat Anti-Mouse IgG:HRP at 1:5000 for 1 hour at RT. Color Development: ECL solution for 5 min in RT. Predicted/Observed Size: Multiple.

Biorbyt Ltd.

7 Signet Court, Swann Road
Cambridge
CB5 8LA
United Kingdom

Email: info@biorbyt.com, support@biorbyt.com

Phone: +44 (0)1223 859353 | Fax: +1 (415) 651-8558

Biorbyt LLC

68 TW Alexander Drive
Research Triangle Park
Durham
NC 27713-2847
United States

Email: info@biorbyt.com, support@biorbyt.com

Phone: +1 (415) 906-5211 | Fax: +1 (415) 651-8558