

Product Datasheet

GLG1 Antibody (C-term) (orb40543)

Catalog Number	orb40543
Category	Antibodies
Description	Peptide affinity purified rabbit polyclonal antibody.
Target	GLG1
Clonality	Polyclonal
Species/Host	Rabbit
Isotype	Rabbit IgG
Conjugation	Unconjugated
Reactivity	Human, Mouse
Predicted Reactivity	Hamster, Rat
Form/Appearance	Purified polyclonal antibody supplied in PBS with 0.09% (W/V) sodium azide. This antibody is purified through a protein A column, followed by peptide affinity purification.
Immunogen	Synthetic Peptide
UniProt ID	Q92896
MW	134552
Tested applications	IHC-P, WB
Dilution range	WB - 1:2000, IHC-P - 1:50-100

Biorbyt Ltd.

7 Signet Court, Swann Road
Cambridge
CB5 8LA
United Kingdom

Email: info@biorbyt.com, support@biorbyt.com

Phone: [+44 \(0\)1223 859353](tel:+44(0)1223859353) | Fax: [+1 \(415\) 651-8558](tel:+1(415)651-8558)

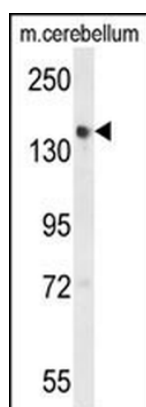
Biorbyt LLC

68 TW Alexander Drive
Research Triangle Park
Durham
NC 27713
United States

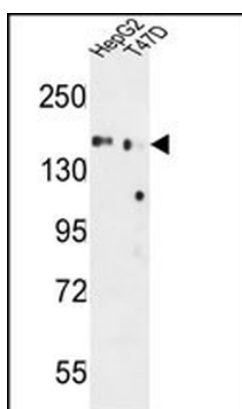
Email: info@biorbyt.com, support@biorbyt.com

Phone: [+1 \(415\) 906-5211](tel:+1(415)906-5211) | Fax: [+1 \(415\) 651-8558](tel:+1(415)651-8558)

Storage	Maintain refrigerated at 2-8°C for up to 2 weeks. For long term storage store at -20°C in small aliquots to prevent freeze-thaw cycles
Note	For research use only
NCBI	NP_001139138.1 , NP_036333.2 , NP_001139139.1
Expiration Date	12 months from date of receipt.



Western blot analysis of GLG1 Antibody (C-term) in mouse cerebellum tissue lysates (35 ug/lane). GLG1 (arrow) was detected using the purified Pab.



GLG1 Antibody (C-term) western blot analysis in HepG2, T47D cell line lysates (35 ug/lane). This demonstrates the GLG1 antibody detected the GLG1 protein (arrow).

Biorbyt Ltd.

7 Signet Court, Swann Road
Cambridge
CB5 8LA
United Kingdom

Email: info@biorbyt.com, support@biorbyt.com

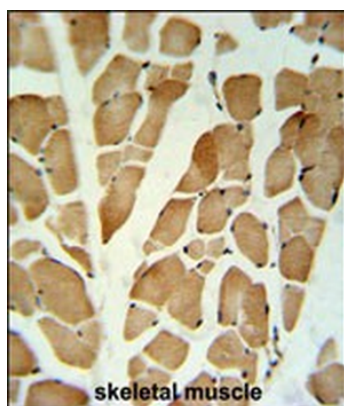
Phone: +44 (0)1223 859353 | Fax: +1 (415) 651-8558

Biorbyt LLC

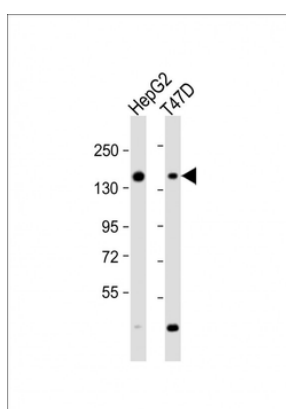
68 TW Alexander Drive
Research Triangle Park
Durham
NC 27713
United States

Email: info@biorbyt.com, support@biorbyt.com

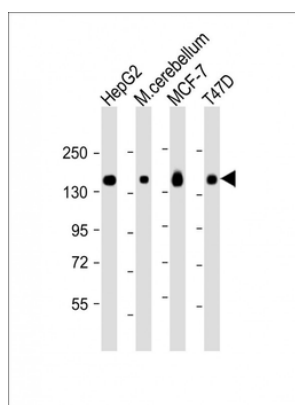
Phone: +1 (415) 906-5211 | Fax: +1 (415) 651-8558



GLG1 Antibody (C-term) IHC analysis in formalin fixed and paraffin embedded skeletal muscle followed by peroxidase conjugation of the secondary antibody and DAB staining. This data demonstrates the use of the GLG1 Antibody (C-term) for immunohistochemistry. Clinical relevance has not been evaluated.



All lanes: Anti-GLG1 Antibody (C-term) at 1:2000 dilution. Lane 1: HepG2 whole cell lysate. Lane 2: T47D whole cell lysate. Lysates/proteins at 20 μ g per lane. Secondary Goat Anti-Rabbit IgG, (H+L), Peroxidase conjugated at 1/10000 dilution. Predicted band size: 136 kDa. Blocking/Dilution buffer: 5% NFDM/TBST.



All lanes: Anti-GLG1 Antibody (C-term) at 1:2000 dilution. Lane 1: HepG2 whole cell lysate. Lane 2: mouse cerebellum lysate. Lane 3: MCF-7 whole cell lysate. Lane 4: T47D whole cell lysate. Lysates/proteins at 20 μ g per lane. Secondary Goat Anti-Rabbit IgG, (H+L), Peroxidase conjugated at 1/10000 dilution. Predicted band size: 136 kDa. Blocking/Dilution buffer: 5% NFDM/TBST.

Biorbyt Ltd.

7 Signet Court, Swann Road
Cambridge
CB5 8LA
United Kingdom

Email: info@biorbyt.com, support@biorbyt.com

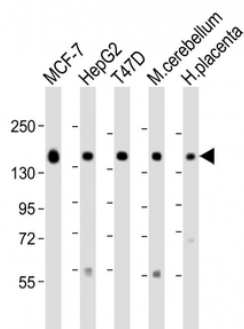
Phone: +44 (0)1223 859353 | Fax: +1 (415) 651-8558

Biorbyt LLC

68 TW Alexander Drive
Research Triangle Park
Durham
NC 27713
United States

Email: info@biorbyt.com, support@biorbyt.com

Phone: +1 (415) 906-5211 | Fax: +1 (415) 651-8558



All lanes: Anti-GLG1 Antibody (C-term) at 1:2000 dilution. Lane 1: MCF-7 lysate. Lane 2: HepG2 whole cell lysate. Lane 3: T47D whole cell lysate. Lane 4: mouse cerebellum lysate. Lane 5: human placenta lysate. Lysates/proteins at 20 µg per lane. Secondary Goat Anti-Rabbit IgG, (H+L), Peroxidase conjugated at 1/10000 dilution. Predicted band size: 136 kDa. Blocking/Dilution buffer: 5% NFDM/TBST.

Biorbyt Ltd.

7 Signet Court, Swann Road
Cambridge
CB5 8LA
United Kingdom

Email: info@biorbyt.com, support@biorbyt.com

Phone: [+44 \(0\)1223 859353](tel:+44(0)1223859353) | Fax: [+1 \(415\) 651-8558](tel:+1(415)651-8558)

Biorbyt LLC

68 TW Alexander Drive
Research Triangle Park
Durham
NC 27713
United States

Email: info@biorbyt.com, support@biorbyt.com

Phone: [+1 \(415\) 906-5211](tel:+1(415)906-5211) | Fax: [+1 \(415\) 651-8558](tel:+1(415)651-8558)