

## Product Datasheet

### ERp57 Antibody (FITC) (orb396328)

<b>Catalog Number</b>	orb396328
<b>Category</b>	Antibodies
<b>Description</b>	Mouse monoclonal antibody against ERp57 conjugated to FITC.
<b>Target</b>	ERp57
<b>Clonality</b>	Monoclonal
<b>Species/Host</b>	Mouse
<b>Isotype</b>	IgG1
<b>Conjugation</b>	FITC
<b>Reactivity</b>	Human
<b>Concentration</b>	1 mg/ml
<b>Buffer/Preservatives</b>	640.91mM DMSO, 136.36 mM Ethanolamine, 126.89 mM chlorides, 9.09mM phosphates, 9.09mM NaHCO <sub>3</sub>
<b>Purification</b>	Protein G Purified
<b>Immunogen</b>	Human recombinant ERp57 (Grp58) protein corresponding to amino acids 25 - 505 (his-tagged)
<b>UniProt ID</b>	<b>P30101</b>
<b>MW</b>	57 kDa
<b>Tested applications</b>	ICC, IF, WB
<b>Dilution range</b>	WB (1:1000); ICC/IF (1:100)

**Biorbyt Ltd.**

7 Signet Court, Swann Road  
Cambridge  
CB5 8LA  
United Kingdom

Email: [info@biorbyt.com](mailto:info@biorbyt.com), [support@biorbyt.com](mailto:support@biorbyt.com)

Phone: [+44 \(0\)1223 859353](tel:+44(0)1223859353) | Fax: [+1 \(415\) 651-8558](tel:+1(415)651-8558)

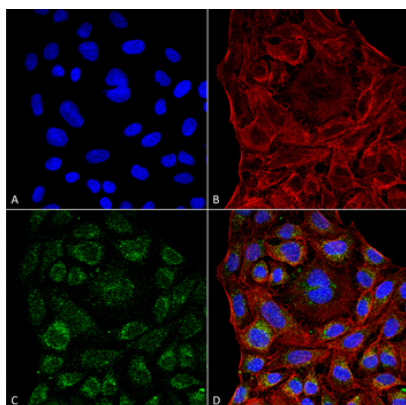
**Biorbyt LLC**

68 TW Alexander Drive  
Research Triangle Park  
Durham  
NC 27713  
United States

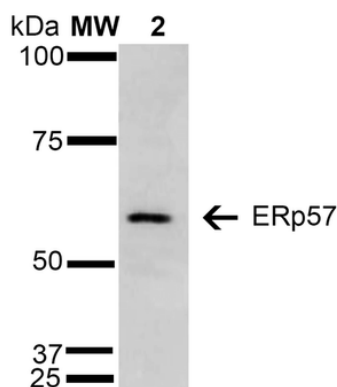
Email: [info@biorbyt.com](mailto:info@biorbyt.com), [support@biorbyt.com](mailto:support@biorbyt.com)

Phone: [+1 \(415\) 906-5211](tel:+1(415)906-5211) | Fax: [+1 \(415\) 651-8558](tel:+1(415)651-8558)

<b>Application notes</b>	A 1:1000 dilution was sufficient for detection of ERp57 in 15 µg of HeLa by ECL immunoblot analysis using Goat Anti-Mouse IgG:HRP as the secondary Antibody.
<b>Specificity</b>	Detects ~57 kDa protein.
<b>Clone Number</b>	4F9
<b>Storage</b>	Conjugated antibodies should be stored according to the product label
<b>Note</b>	For research use only
<b>Entrez</b>	<a href="#">2923</a>
<b>NCBI</b>	<a href="#">NP_005304.3</a>
<b>Expiration Date</b>	12 months from date of receipt.



Immunocytochemistry/Immunofluorescence analysis using Mouse Anti-ERp57 Monoclonal Antibody, Clone 4F9. Tissue: Cervical cancer cell line (HeLa). Species: Human. Fixation: 4% Formaldehyde for 15 min at RT. Primary Antibody: Mouse Anti-ERp57 Monoclonal Antibody at 1:100 for 60 min at RT. Secondary Antibody: Goat Anti-Mouse ATTO 488 at 1:200 for 60 min at RT. Counterstain: Phalloidin Texas Red F-Actin stain; DAPI (blue) nuclear stain at 1:1000, 1:5000 for 60 min at RT, 5 min at RT. Localization: Endoplasmic reticulum, Melanosome. Magnification: 60X. (A) DAPI (blue) nuclear stain. (B) Phalloidin Texas Red F-Actin stain. (C) ERp57 Antibody. (D) Composite.



Western Blot analysis of Human Cervical cancer cell line (HeLa) lysate showing detection of 57 kDa Erp57 protein using Mouse Anti-Erp57 Monoclonal Antibody, Clone 4F9. Lane 1: Molecular Weight Ladder (MW). Lane 2: HeLa cell lysate. Load: 15 µg. Block: 5% Skim Milk in TBST. Primary Antibody: Mouse Anti-Erp57 Monoclonal Antibody at 1:1000 for 2 hours at RT. Secondary Antibody: Goat Anti-Mouse IgG: HRP at 1:1000 for 60 min at RT. Color Development: ECL solution for 5 min in RT. Predicted/Observed Size: 57 kDa.

**Biorbyt Ltd.**

7 Signet Court, Swann Road  
Cambridge  
CB5 8LA  
United Kingdom

Email: [info@biorbyt.com](mailto:info@biorbyt.com), [support@biorbyt.com](mailto:support@biorbyt.com)  
Phone: +44 (0)1223 859353 | Fax: +1 (415) 651-8558

**Biorbyt LLC**

68 TW Alexander Drive  
Research Triangle Park  
Durham  
NC 27713  
United States

Email: [info@biorbyt.com](mailto:info@biorbyt.com), [support@biorbyt.com](mailto:support@biorbyt.com)  
Phone: +1 (415) 906-5211 | Fax: +1 (415) 651-8558