

Product Datasheet

ERp57 Antibody (Biotin) (orb396327)

Catalog Number	orb396327
Category	Antibodies
Description	Mouse monoclonal antibody against ERp57 conjugated to Biotin.
Target	ERp57
Clonality	Monoclonal
Species/Host	Mouse
Isotype	IgG1
Conjugation	Biotin
Reactivity	Human
Concentration	1 mg/ml
Buffer/Preservatives	136.36mM Ethanolamine, 133.23 mM Chlorides, 9.55mM Phosphates, 9.55mM Sodium Bicarbonate
Purification	Protein G Purified
Immunogen	Human recombinant ERp57 (Grp58) protein corresponding to amino acids 25 - 505 (his-tagged)
UniProt ID	P30101
MW	57 kDa
Tested applications	ICC, IF, WB
Dilution range	WB (1:1000); ICC/IF (1:100)

Biorbyt Ltd.

7 Signet Court, Swann Road
Cambridge
CB5 8LA
United Kingdom

Email: info@biorbyt.com, support@biorbyt.com

Phone: [+44 \(0\)1223 859353](tel:+44(0)1223859353) | Fax: [+1 \(415\) 651-8558](tel:+1(415)651-8558)

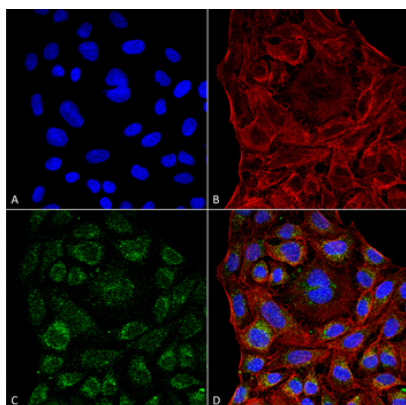
Biorbyt LLC

68 TW Alexander Drive
Research Triangle Park
Durham
NC 27713
United States

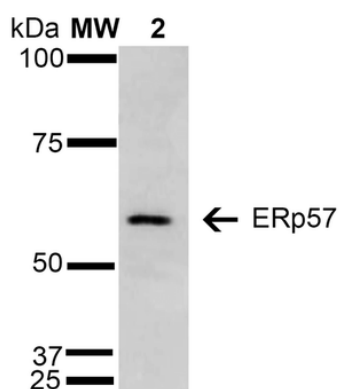
Email: info@biorbyt.com, support@biorbyt.com

Phone: [+1 \(415\) 906-5211](tel:+1(415)906-5211) | Fax: [+1 \(415\) 651-8558](tel:+1(415)651-8558)

Application notes	A 1:1000 dilution was sufficient for detection of ERp57 in 15 µg of HeLa by ECL immunoblot analysis using Goat Anti-Mouse IgG:HRP as the secondary Antibody.
Specificity	Detects ~57 kDa protein.
Clone Number	4F9
Storage	Conjugated antibodies should be stored according to the product label
Note	For research use only
Entrez	2923
NCBI	NP_005304.3
Expiration Date	12 months from date of receipt.



Immunocytochemistry/Immunofluorescence analysis using Mouse Anti-ERp57 Monoclonal Antibody, Clone 4F9. Tissue: Cervical cancer cell line (HeLa). Species: Human. Fixation: 4% Formaldehyde for 15 min at RT. Primary Antibody: Mouse Anti-ERp57 Monoclonal Antibody at 1:100 for 60 min at RT. Secondary Antibody: Goat Anti-Mouse ATTO 488 at 1:200 for 60 min at RT. Counterstain: Phalloidin Texas Red F-Actin stain; DAPI (blue) nuclear stain at 1:1000, 1:5000 for 60 min at RT, 5 min at RT. Localization: Endoplasmic reticulum, Melanosome. Magnification: 60X. (A) DAPI (blue) nuclear stain. (B) Phalloidin Texas Red F-Actin stain. (C) ERp57 Antibody. (D) Composite.



Western Blot analysis of Human Cervical cancer cell line (HeLa) lysate showing detection of 57 kDa Erp57 protein using Mouse Anti-Erp57 Monoclonal Antibody, Clone 4F9. Lane 1: Molecular Weight Ladder (MW). Lane 2: HeLa cell lysate. Load: 15 µg. Block: 5% Skim Milk in TBST. Primary Antibody: Mouse Anti-Erp57 Monoclonal Antibody at 1:1000 for 2 hours at RT. Secondary Antibody: Goat Anti-Mouse IgG: HRP at 1:1000 for 60 min at RT. Color Development: ECL solution for 5 min in RT. Predicted/Observed Size: 57 kDa.

Biorbyt Ltd.

7 Signet Court, Swann Road
Cambridge
CB5 8LA
United Kingdom

Email: info@biorbyt.com, support@biorbyt.com
Phone: +44 (0)1223 859353 | Fax: +1 (415) 651-8558

Biorbyt LLC

68 TW Alexander Drive
Research Triangle Park
Durham
NC 27713
United States

Email: info@biorbyt.com, support@biorbyt.com
Phone: +1 (415) 906-5211 | Fax: +1 (415) 651-8558