

## Product Datasheet

### ERp57 Antibody (APC) (orb396326)

|                             |  |
|-----------------------------|--|
| <b>Catalog Number</b>       | orb396326  |
| <b>Category</b>             | Antibodies   |
| <b>Description</b>          | Mouse monoclonal antibody against ERp57 conjugated to APC .                                |
| <b>Target</b>               | ERp57  |
| <b>Clonality</b>            | Monoclonal   |
| <b>Species/Host</b>         | Mouse  |
| <b>Isotype</b>              | IgG1   |
| <b>Conjugation</b>          | APC  |
| <b>Reactivity</b>           | Human  |
| <b>Concentration</b>        | 1 mg/ml  |
| <b>Buffer/Preservatives</b> | 95.46mM Phosphate, 2.48mM MES and 2mM EDTA   |
| <b>Purification</b>         | Protein G Purified   |
| <b>Immunogen</b>            | Human recombinant ERp57 (Grp58) protein corresponding to amino acids 25 - 505 (his-tagged) |
| <b>UniProt ID</b>           | <b>P30101</b>  |
| <b>MW</b>                   | 57 kDa   |
| <b>Tested applications</b>  | ICC, IF, WB  |
| <b>Dilution range</b>       | WB (1:1000); ICC/IF (1:100)  |

**Biorbyt Ltd.**

7 Signet Court, Swann Road  
Cambridge  
CB5 8LA  
United Kingdom

Email: [info@biorbyt.com](mailto:info@biorbyt.com), [support@biorbyt.com](mailto:support@biorbyt.com)

Phone: [+44 \(0\)1223 859353](tel:+44(0)1223859353) | Fax: [+1 \(415\) 651-8558](tel:+1(415)651-8558)

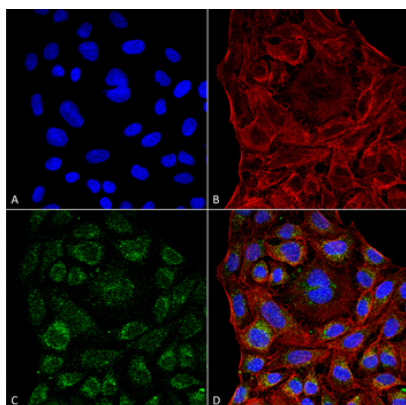
**Biorbyt LLC**

68 TW Alexander Drive  
Research Triangle Park  
Durham  
NC 27713  
United States

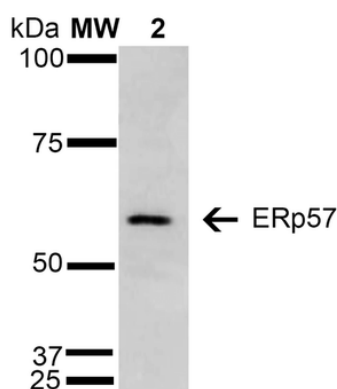
Email: [info@biorbyt.com](mailto:info@biorbyt.com), [support@biorbyt.com](mailto:support@biorbyt.com)

Phone: [+1 \(415\) 906-5211](tel:+1(415)906-5211) | Fax: [+1 \(415\) 651-8558](tel:+1(415)651-8558)

|                          |  |
|--------------------------|--|
| <b>Application notes</b> | A 1:1000 dilution was sufficient for detection of ERp57 in 15 µg of HeLa by ECL immunoblot analysis using Goat Anti-Mouse IgG:HRP as the secondary Antibody. |
| <b>Specificity</b>       | Detects ~57 kDa protein.   |
| <b>Clone Number</b>      | 4F9  |
| <b>Storage</b>           | Conjugated antibodies should be stored according to the product label  |
| <b>Note</b>              | For research use only  |
| <b>Entrez</b>            | <b>2923</b>  |
| <b>NCBI</b>              | <b>NP_005304.3</b>   |
| <b>Expiration Date</b>   | 12 months from date of receipt.  |



Immunocytochemistry/Immunofluorescence analysis using Mouse Anti-ERp57 Monoclonal Antibody, Clone 4F9. Tissue: Cervical cancer cell line (HeLa). Species: Human. Fixation: 4% Formaldehyde for 15 min at RT. Primary Antibody: Mouse Anti-ERp57 Monoclonal Antibody at 1:100 for 60 min at RT. Secondary Antibody: Goat Anti-Mouse ATTO 488 at 1:200 for 60 min at RT. Counterstain: Phalloidin Texas Red F-Actin stain; DAPI (blue) nuclear stain at 1:1000, 1:5000 for 60 min at RT, 5 min at RT. Localization: Endoplasmic reticulum, Melanosome. Magnification: 60X. (A) DAPI (blue) nuclear stain. (B) Phalloidin Texas Red F-Actin stain. (C) ERp57 Antibody. (D) Composite.



Western Blot analysis of Human Cervical cancer cell line (HeLa) lysate showing detection of 57 kDa Erp57 protein using Mouse Anti-Erp57 Monoclonal Antibody, Clone 4F9. Lane 1: Molecular Weight Ladder (MW). Lane 2: HeLa cell lysate. Load: 15 µg. Block: 5% Skim Milk in TBST. Primary Antibody: Mouse Anti-Erp57 Monoclonal Antibody at 1:1000 for 2 hours at RT. Secondary Antibody: Goat Anti-Mouse IgG: HRP at 1:1000 for 60 min at RT. Color Development: ECL solution for 5 min in RT. Predicted/Observed Size: 57 kDa.

**Biorbyt Ltd.**

7 Signet Court, Swann Road  
Cambridge  
CB5 8LA  
United Kingdom

Email: [info@biorbyt.com](mailto:info@biorbyt.com), [support@biorbyt.com](mailto:support@biorbyt.com)

Phone: +44 (0)1223 859353 | Fax: +1 (415) 651-8558

**Biorbyt LLC**

68 TW Alexander Drive  
Research Triangle Park  
Durham  
NC 27713  
United States

Email: [info@biorbyt.com](mailto:info@biorbyt.com), [support@biorbyt.com](mailto:support@biorbyt.com)

Phone: +1 (415) 906-5211 | Fax: +1 (415) 651-8558