

Product Datasheet

Glucose-6-Phosphate Dehydrogenase Activity Colorimetric Microplate Assay Kit (orb390752)

Catalog Number	orb390752
Category	Assays and Kits
Description	Detection and Quantification of Glucose-6-Phosphate Dehydrogenase Activity.
Reactivity	All
Tested applications	FA
Application notes	Detection Method: Colorimetric
Assay Type	Detection
Range	4 $\mu\text{mol/L}$ - 400 $\mu\text{mol/L}$
Sample Types	Urine, Serum, Plasma, Tissue extracts, Cell lysate, Cell culture media, Other biological fluids
CAS Number	9001-40-5
Storage	Shipped and store at 4°C for 6 months.
Note	For research use only
Expiration Date	12 months from date of receipt.

Biorbyt Ltd.

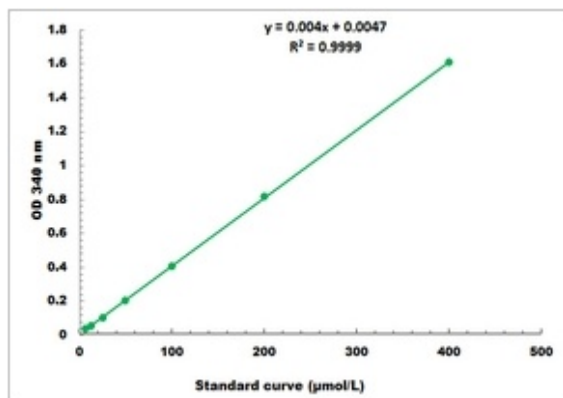
7 Signet Court, Swann Road
Cambridge
CB5 8LA
United Kingdom

Email: info@biorbyt.com, support@biorbyt.com
Phone: [+44 \(0\)1223 859353](tel:+44(0)1223859353) | Fax: [+1 \(415\) 651-8558](tel:+1(415)651-8558)

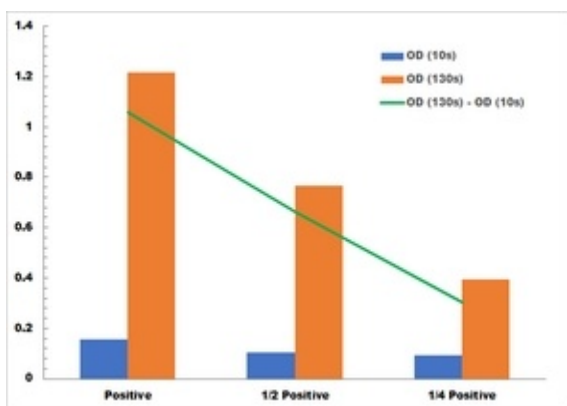
Biorbyt LLC

68 TW Alexander Drive
Research Triangle Park
Durham
NC 27713-2847
United States

Email: info@biorbyt.com, support@biorbyt.com
Phone: [+1 \(415\) 906-5211](tel:+1(415)906-5211) | Fax: [+1 \(415\) 651-8558](tel:+1(415)651-8558)



Representative Standard Curve



Positive Control reaction in 96-well plate assay with decreasing the concentration

Biorbyt Ltd.

7 Signet Court, Swann Road
Cambridge
CB5 8LA
United Kingdom

Email: info@biorbyt.com, support@biorbyt.com

Phone: +44 (0)1223 859353 | Fax: +1 (415) 651-8558

Biorbyt LLC

68 TW Alexander Drive
Research Triangle Park
Durham
NC 27713-2847
United States

Email: info@biorbyt.com, support@biorbyt.com

Phone: +1 (415) 906-5211 | Fax: +1 (415) 651-8558