

## Product Datasheet

# Creatine Kinase Activity Colorimetric Microplate Assay Kit (orb390751)

<b>Catalog Number</b>	orb390751
<b>Category</b>	Assays and Kits
<b>Description</b>	Detection and Quantification of Creatine Kinase Activity.
<b>Reactivity</b>	All
<b>Tested applications</b>	FA
<b>Assay Type</b>	Detection
<b>Range</b>	30 $\mu\text{mol/L}$ - 600 $\mu\text{mol/L}$
<b>Sample Types</b>	Urine, Serum, Plasma, Tissue extracts, Cell lysate, Cell culture media, Other biological fluids
<b>CAS Number</b>	9001-15-4
<b>Storage</b>	Shipped and store at 4°C for 6 months.
<b>Note</b>	For research use only
<b>Expiration Date</b>	12 months from date of receipt.

### Biorbyt Ltd.

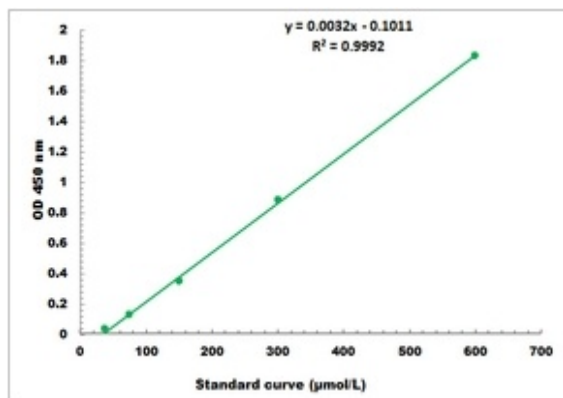
7 Signet Court, Swann Road  
Cambridge  
CB5 8LA  
United Kingdom

Email: [info@biorbyt.com](mailto:info@biorbyt.com), [support@biorbyt.com](mailto:support@biorbyt.com)  
Phone: [+44 \(0\)1223 859353](tel:+44(0)1223859353) | Fax: [+1 \(415\) 651-8558](tel:+1(415)651-8558)

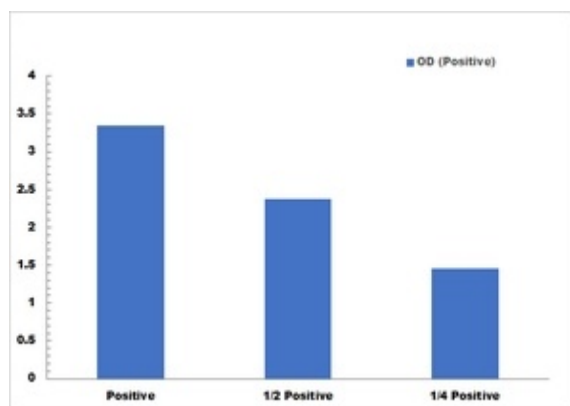
### Biorbyt LLC

68 TW Alexander Drive  
Research Triangle Park  
Durham  
NC 27713  
United States

Email: [info@biorbyt.com](mailto:info@biorbyt.com), [support@biorbyt.com](mailto:support@biorbyt.com)  
Phone: [+1 \(415\) 906-5211](tel:+1(415)906-5211) | Fax: [+1 \(415\) 651-8558](tel:+1(415)651-8558)



Representative Standard Curve



Positive Control reaction in 96-well plate assay with decreasing the concentration

**Biorbyt Ltd.**

7 Signet Court, Swann Road  
Cambridge  
CB5 8LA  
United Kingdom

Email: [info@biorbyt.com](mailto:info@biorbyt.com), [support@biorbyt.com](mailto:support@biorbyt.com)

Phone: +44 (0)1223 859353 | Fax: +1 (415) 651-8558

**Biorbyt LLC**

68 TW Alexander Drive  
Research Triangle Park  
Durham  
NC 27713  
United States

Email: [info@biorbyt.com](mailto:info@biorbyt.com), [support@biorbyt.com](mailto:support@biorbyt.com)

Phone: +1 (415) 906-5211 | Fax: +1 (415) 651-8558