

Product Datasheet

CXCL5 Rabbit Polyclonal Antibody (orb389659)

Catalog Number	orb389659
Category	Antibodies
Description	CXCL5 Rabbit Polyclonal Antibody is an unconjugated antibody that specifically recognizes CXCL5. Generated against a KLH conjugated synthetic peptide derived from human CXCL5. The peptide is available as orb14362. It is supplied in liquid form and exhibits reactivity with Guinea pig, Human, Mouse and Rat samples. The suitable applications for this antibody are ICC, IF, IHC-P and WB.
Target	CXCL5
Clonality	Polyclonal
Species/Host	Rabbit
Isotype	IgG
Conjugation	Unconjugated
Reactivity	Guinea pig, Human, Mouse, Rat
Form/Appearance	10 mM PBS, 0.02% sodium azide
Concentration	- 100 µg (in 200 µl): 0.5 mg/ml- 200 µg (in 400 µl): 0.5 mg/ml
Purity	Polyclonal antibodies are purified by peptide affinity chromatography
Immunogen	KLH conjugated synthetic peptide derived from human CXCL5. Please contact us for the exact immunogen sequence. The peptide is available as orb14362.
UniProt ID	P42830, P97885, P50228
MW	12 kDa

Biorbyt Ltd.

7 Signet Court, Swann Road
Cambridge
CB5 8LA
United Kingdom

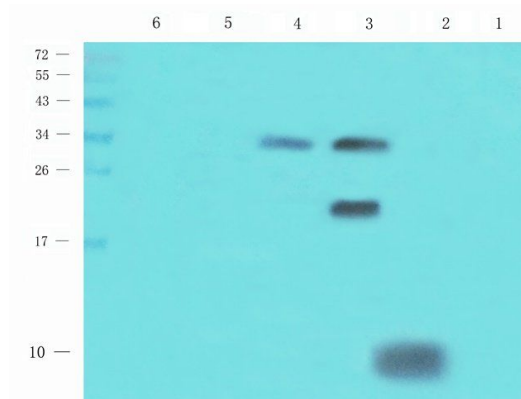
Email: info@biorbyt.com, support@biorbyt.com
Phone: [+44 \(0\)1223 859353](tel:+44(0)1223859353) | Fax: [+1 \(415\) 651-8558](tel:+1(415)651-8558)

Biorbyt LLC

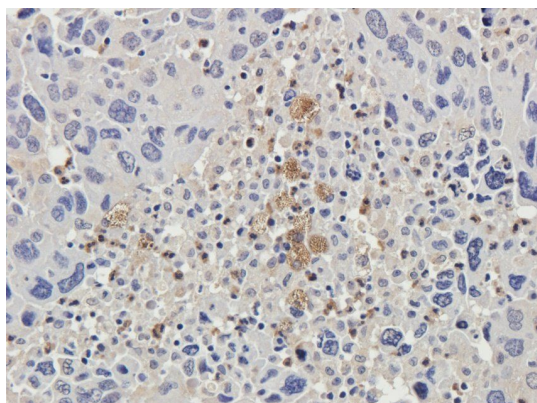
68 TW Alexander Drive
Research Triangle Park
Durham
NC 27713
United States

Email: info@biorbyt.com, support@biorbyt.com
Phone: [+1 \(415\) 906-5211](tel:+1(415)906-5211) | Fax: [+1 \(415\) 651-8558](tel:+1(415)651-8558)

Tested applications	ICC, IF, IHC-P, WB
Dilution range	WB: 1:200-1000, IHC-P: 1:100-600, IF/ICC: 1:100-600
Storage	Maintain refrigerated at 2-8°C for up to 2 weeks. For long term storage store at -20°C in small aliquots to prevent freeze-thaw cycles.
Note	For research use only
NCBI	002985
Expiration Date	12 months from date of receipt.



WB analysis of rat stomach (lane 1), rat rectum (lane 2), mouse ovary (lane 3), human lung cancer (lane 4), human breast cancer (lane 5), hela cells (lane 6) using anti-CXCL5 (1 ug/ml)



Immunohistochemical staining of human lung cancer tissue using anti-CXCL5 (2.5 ug/ml)

Biorbyt Ltd.

7 Signet Court, Swann Road
Cambridge
CB5 8LA
United Kingdom

Email: info@biorbyt.com, support@biorbyt.com

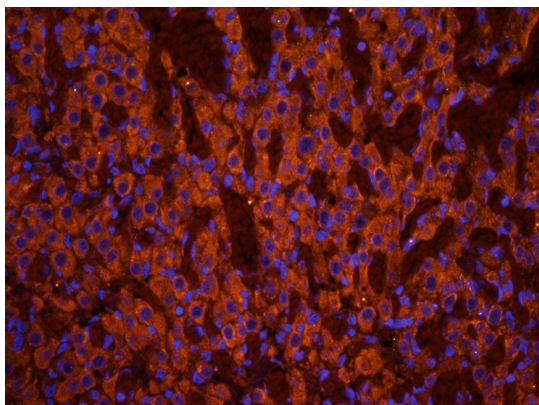
Phone: +44 (0)1223 859353 | Fax: +1 (415) 651-8558

Biorbyt LLC

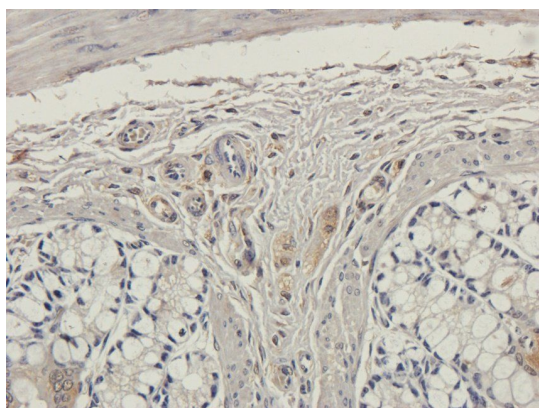
68 TW Alexander Drive
Research Triangle Park
Durham
NC 27713
United States

Email: info@biorbyt.com, support@biorbyt.com

Phone: +1 (415) 906-5211 | Fax: +1 (415) 651-8558



IF analysis of rat ovary tissue using CXCL5 antibody (2.5 ug/ml)



IHC-P image of guinea pig rectum tissue using anti-CXCL5 (2.5 ug/ml)

Biorbyt Ltd.

7 Signet Court, Swann Road
Cambridge
CB5 8LA
United Kingdom

Email: info@biorbyt.com, support@biorbyt.com

Phone: [+44 \(0\)1223 859353](tel:+44(0)1223859353) | Fax: [+1 \(415\) 651-8558](tel:+1(415)651-8558)

Biorbyt LLC

68 TW Alexander Drive
Research Triangle Park
Durham
NC 27713
United States

Email: info@biorbyt.com, support@biorbyt.com

Phone: [+1 \(415\) 906-5211](tel:+1(415)906-5211) | Fax: [+1 \(415\) 651-8558](tel:+1(415)651-8558)