

Product Datasheet

AMIGO2 Rabbit Polyclonal Antibody (orb389655)

Catalog Number	orb389655
Category	Antibodies
Description	AMIGO2 Rabbit Polyclonal Antibody is an unconjugated antibody that specifically recognizes AMIGO2. Generated against a KLH conjugated synthetic peptide derived from human AMIGO2. The peptide is available as orb14356. It is supplied in liquid form and exhibits reactivity with Human, Mouse and Rat samples. The suitable applications for this antibody are ICC, IF, IHC-P and WB.
Target	AMIGO2
Clonality	Polyclonal
Species/Host	Rabbit
Isotype	IgG
Conjugation	Unconjugated
Reactivity	Human, Mouse, Rat
Form/Appearance	10 mM PBS, 0.02% sodium azide
Concentration	- 100 µg (in 200 µl): 0.5 mg/ml- 200 µg (in 400 µl): 0.5 mg/ml
Purity	Polyclonal antibodies are purified by peptide affinity chromatography
Immunogen	KLH conjugated synthetic peptide derived from human AMIGO2. Please contact us for the exact immunogen sequence. The peptide is available as orb14356.
UniProt ID	Q86SJ2, Q7TNJ4, Q80ZD9
MW	58 kDa

Biorbyt Ltd.

7 Signet Court, Swann Road
Cambridge
CB5 8LA
United Kingdom

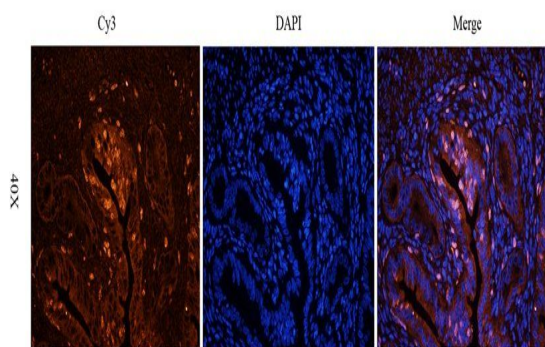
Email: info@biorbyt.com, support@biorbyt.com
Phone: [+44 \(0\)1223 859353](tel:+44(0)1223859353) | Fax: [+1 \(415\) 651-8558](tel:+1(415)651-8558)

Biorbyt LLC

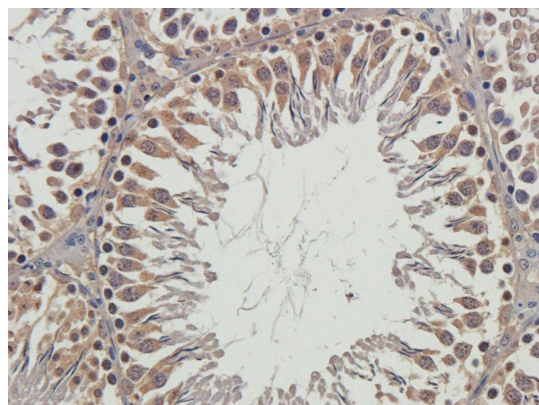
68 TW Alexander Drive
Research Triangle Park
Durham
NC 27713-2847
United States

Email: info@biorbyt.com, support@biorbyt.com
Phone: [+1 \(415\) 906-5211](tel:+1(415)906-5211) | Fax: [+1 \(415\) 651-8558](tel:+1(415)651-8558)

Tested applications	ICC, IF, IHC-P, WB
Dilution range	WB: 1:200-1500, IHC-P: 1:100-600, IF/ICC: 1:100-600
Storage	Maintain refrigerated at 2-8°C for up to 2 weeks. For long term storage store at -20°C in small aliquots to prevent freeze-thaw cycles.
Note	For research use only
NCBI	001137140
Expiration Date	12 months from date of receipt.



IF image of mouse uterus tissue using anti-AMIGO2 (2.5 ug/ml)



Immunohistochemical staining of rat testis tissue using AMIGO2 antibody (2.5 ug/ml)

Biorbyt Ltd.

7 Signet Court, Swann Road
Cambridge
CB5 8LA
United Kingdom

Email: info@biorbyt.com, support@biorbyt.com

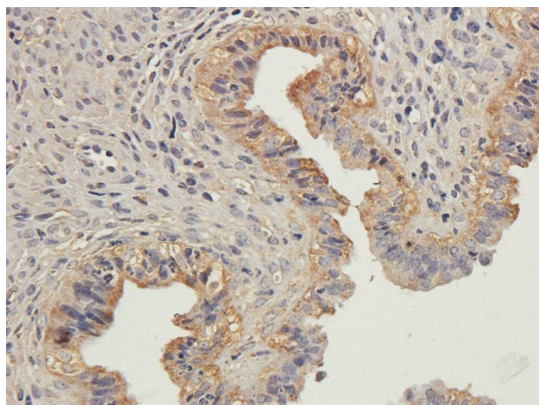
Phone: +44 (0)1223 859353 | Fax: +1 (415) 651-8558

Biorbyt LLC

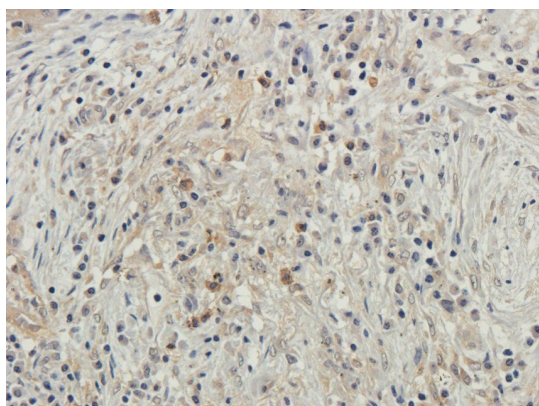
68 TW Alexander Drive
Research Triangle Park
Durham
NC 27713-2847
United States

Email: info@biorbyt.com, support@biorbyt.com

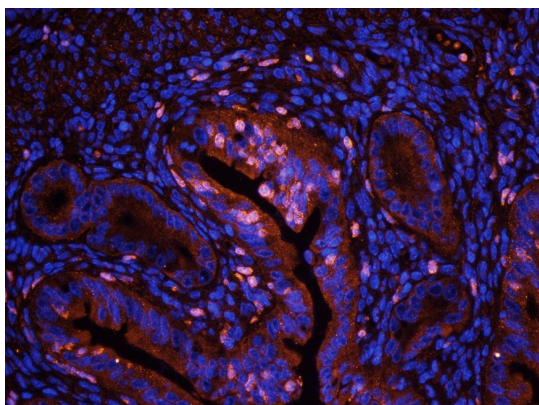
Phone: +1 (415) 906-5211 | Fax: +1 (415) 651-8558



Immunohistochemical staining of paraffin embedded mouse ovary tissue using anti-AMIGO2 (2.5 ug/ml)



IHC-P staining of human lung cancer tissue using anti-AMIGO2 (2.5 ug/ml)



Immunofluorescence image of mouse uterus tissue using anti-AMIGO2 (2.5 ug/ml)

Biorbyt Ltd.

7 Signet Court, Swann Road
Cambridge
CB5 8LA
United Kingdom

Email: info@biorbyt.com, support@biorbyt.com

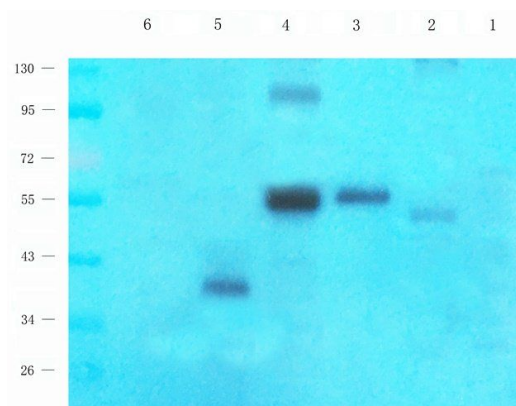
Phone: [+44 \(0\)1223 859353](tel:+44(0)1223859353) | Fax: [+1 \(415\) 651-8558](tel:+1(415)651-8558)

Biorbyt LLC

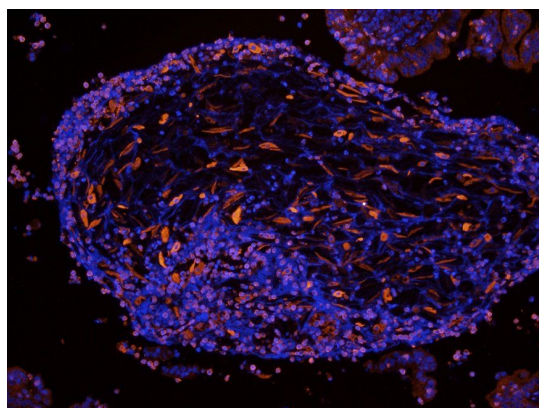
68 TW Alexander Drive
Research Triangle Park
Durham
NC 27713-2847
United States

Email: info@biorbyt.com, support@biorbyt.com

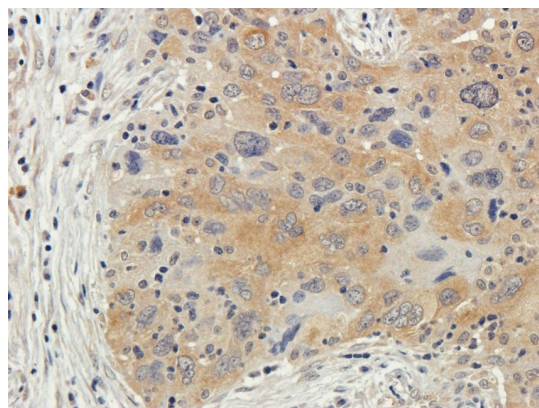
Phone: [+1 \(415\) 906-5211](tel:+1(415)906-5211) | Fax: [+1 \(415\) 651-8558](tel:+1(415)651-8558)



Western blot analysis of rat ovary (lane 1), mouse testis (lane 2), human lung cancer (lane 3), human ovarian cancer (lane 4), rat uterus (lane 5), mouse lung (lane 6) using anti-AMIGO2 (1 ug/ml)



Immunofluorescence analysis of mouse uterus tissue using AMIGO2 antibody (2.5 ug/ml)



IHC-P staining of human lung cancer tissue using anti-AMIGO2 (2.5 ug/ml)

Biorbyt Ltd.

7 Signet Court, Swann Road
Cambridge
CB5 8LA
United Kingdom

Email: info@biorbyt.com, support@biorbyt.com

Phone: +44 (0)1223 859353 | Fax: +1 (415) 651-8558

Biorbyt LLC

68 TW Alexander Drive
Research Triangle Park
Durham
NC 27713-2847
United States

Email: info@biorbyt.com, support@biorbyt.com

Phone: +1 (415) 906-5211 | Fax: +1 (415) 651-8558