

Product Datasheet

Caveolin 1 Rabbit Polyclonal Antibody (orb389645)

Catalog Number	orb389645
Category	Antibodies
Description	Caveolin 1 Rabbit Polyclonal Antibody is an unconjugated antibody that specifically recognizes Caveolin 1. Generated against a KLH conjugated synthetic peptide derived from human Caveolin 1. The peptide is available as orb14304. It is supplied in liquid form and exhibits reactivity with Human, Mouse, Porcine and Rat samples. The suitable applications for this antibody are IHC-P and WB.
Target	Caveolin 1
Clonality	Polyclonal
Species/Host	Rabbit
Isotype	IgG
Conjugation	Unconjugated
Reactivity	Human, Mouse, Porcine, Rat
Form/Appearance	10 mM PBS, 0.02% sodium azide
Concentration	- 100 µg (in 200 µl): 0.5 mg/ml- 200 µg (in 400 µl): 0.5 mg/ml
Purity	Polyclonal antibodies are purified by peptide affinity chromatography
Immunogen	KLH conjugated synthetic peptide derived from human Caveolin 1. Please contact us for the exact immunogen sequence. The peptide is available as orb14304.
UniProt ID	P49817, P41350, Q03135
MW	20 kDa

Biorbyt Ltd.

7 Signet Court, Swann Road
Cambridge
CB5 8LA
United Kingdom

Email: info@biorbyt.com, support@biorbyt.com

Phone: [+44 \(0\)1223 859353](tel:+44(0)1223859353) | Fax: [+1 \(415\) 651-8558](tel:+1(415)651-8558)

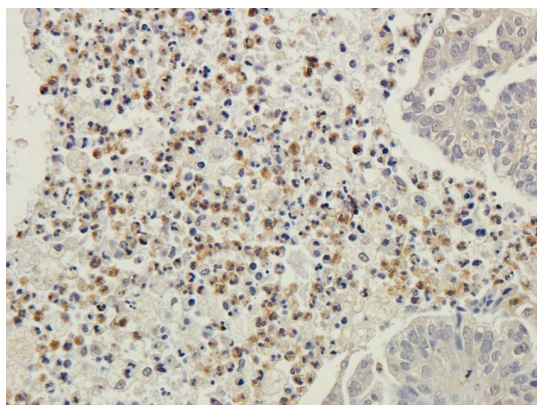
Biorbyt LLC

68 TW Alexander Drive
Research Triangle Park
Durham
NC 27713-2847
United States

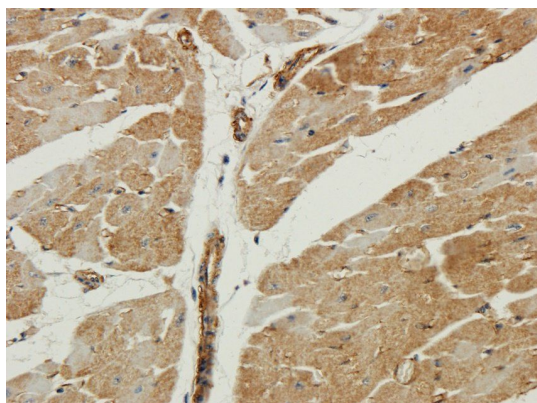
Email: info@biorbyt.com, support@biorbyt.com

Phone: [+1 \(415\) 906-5211](tel:+1(415)906-5211) | Fax: [+1 \(415\) 651-8558](tel:+1(415)651-8558)

Tested applications	IHC-P, WB
Dilution range	WB: 1:200-2000, IHC-P: 1:100-800
Storage	Maintain refrigerated at 2-8°C for up to 2 weeks. For long term storage store at -20°C in small aliquots to prevent freeze-thaw cycles.
Note	For research use only
NCBI	001744
Expiration Date	12 months from date of receipt.



Immunohistochemical staining of paraffin embedded human ovarian cancer tissue using anti-Caveolin 1 (2.5 ug/ml)



Immunohistochemical staining of paraffin embedded pig heart tissue using anti-Caveolin 1 (2.5 ug/ml)

Biorbyt Ltd.

7 Signet Court, Swann Road
Cambridge
CB5 8LA
United Kingdom

Email: info@biorbyt.com, support@biorbyt.com

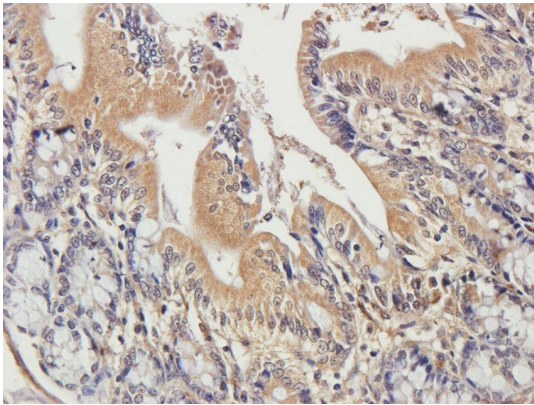
Phone: [+44 \(0\)1223 859353](tel:+44(0)1223859353) | Fax: [+1 \(415\) 651-8558](tel:+1(415)651-8558)

Biorbyt LLC

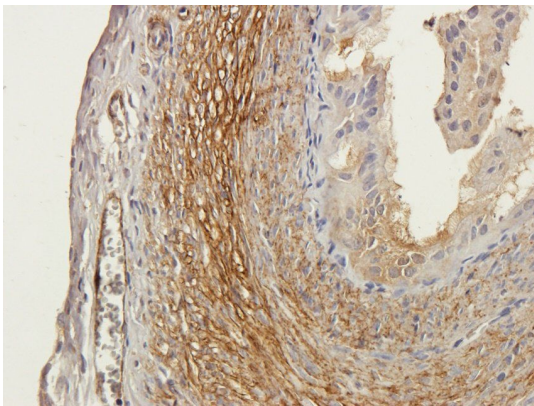
68 TW Alexander Drive
Research Triangle Park
Durham
NC 27713-2847
United States

Email: info@biorbyt.com, support@biorbyt.com

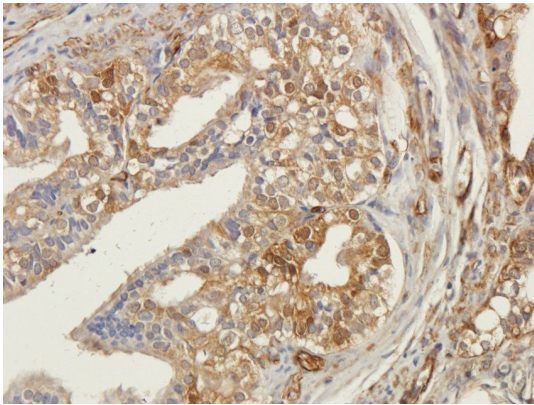
Phone: [+1 \(415\) 906-5211](tel:+1(415)906-5211) | Fax: [+1 \(415\) 651-8558](tel:+1(415)651-8558)



Immunohistochemical staining of rat colon tissue using Caveolin 1 antibody (2.5 ug/ml)



IHC-P staining of rat ovary tissue using anti-Caveolin 1 (2.5 ug/ml)



Immunohistochemical staining of paraffin embedded human ovarian cancer tissue using Caveolin 1 antibody (2.5 ug/ml)

Biorbyt Ltd.

7 Signet Court, Swann Road
Cambridge
CB5 8LA
United Kingdom

Email: info@biorbyt.com, support@biorbyt.com

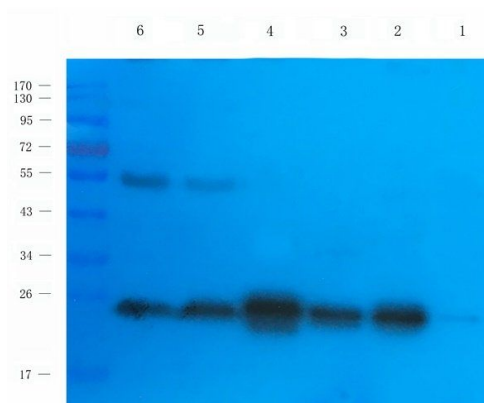
Phone: [+44 \(0\)1223 859353](tel:+44(0)1223859353) | Fax: [+1 \(415\) 651-8558](tel:+1(415)651-8558)

Biorbyt LLC

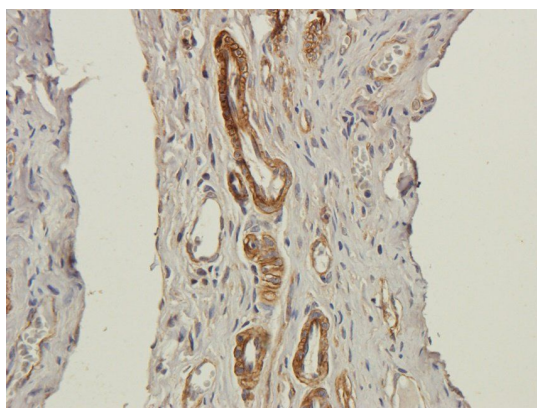
68 TW Alexander Drive
Research Triangle Park
Durham
NC 27713-2847
United States

Email: info@biorbyt.com, support@biorbyt.com

Phone: [+1 \(415\) 906-5211](tel:+1(415)906-5211) | Fax: [+1 \(415\) 651-8558](tel:+1(415)651-8558)



Western blot analysis of rat brain (lane 1), mouse heart (lane 2), mouse colon (lane 3), mouse stomach (lane 4), rat ovary (lane 5), human ovarian cancer (lane 6) using Caveolin 1 antibody (1 ug/ml)



Immunohistochemical staining of paraffin embedded rat ovary tissue using anti-Caveolin 1 (2.5 ug/ml)

Biorbyt Ltd.

7 Signet Court, Swann Road
Cambridge
CB5 8LA
United Kingdom

Email: info@biorbyt.com, support@biorbyt.com

Phone: [+44 \(0\)1223 859353](tel:+44(0)1223859353) | Fax: [+1 \(415\) 651-8558](tel:+1(415)651-8558)

Biorbyt LLC

68 TW Alexander Drive
Research Triangle Park
Durham
NC 27713-2847
United States

Email: info@biorbyt.com, support@biorbyt.com

Phone: [+1 \(415\) 906-5211](tel:+1(415)906-5211) | Fax: [+1 \(415\) 651-8558](tel:+1(415)651-8558)