

Product Datasheet

CD169 Sialoadhesin Rabbit Polyclonal Antibody (orb385451)

Catalog Number	orb385451
Category	Antibodies
Description	CD169 Sialoadhesin Rabbit Polyclonal Antibody is an unconjugated antibody that specifically recognizes CD169 Sialoadhesin. This antibody has specificity with CD169 Sialoadhesin, Generated against a KLH conjugated synthetic peptide derived from human CD169 Sialoadhesin. The peptide is available as orb13102. It is supplied in liquid form and exhibits reactivity with Guinea pig, Human, Mouse and Rat samples. The suitable applications for this antibody are ICC, IF, IHC-P and WB.
Target	CD169 Sialoadhesin. This antibody has specificity with CD169 Sialoadhesin.
Clonality	Polyclonal
Species/Host	Rabbit
Isotype	IgG
Conjugation	Unconjugated
Reactivity	Guinea pig, Human, Mouse, Rat
Form/Appearance	10 mM PBS, 0.02% sodium azide
Concentration	- 100 µg (in 200 µl): 0.5 mg/ml- 200 µg (in 400 µl): 0.5 mg/ml
Purity	Polyclonal antibodies are purified by peptide affinity chromatography
Immunogen	KLH conjugated synthetic peptide derived from human CD169 Sialoadhesin. Please contact us for the exact immunogen sequence. The peptide is available as orb13102.

Biorbyt Ltd.

7 Signet Court, Swann Road
Cambridge
CB5 8LA
United Kingdom

Email: info@biorbyt.com, support@biorbyt.com

Phone: [+44 \(0\)1223 859353](tel:+44(0)1223859353) | Fax: [+1 \(415\) 651-8558](tel:+1(415)651-8558)

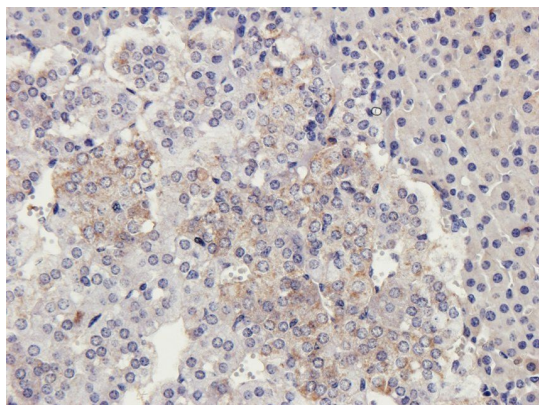
Biorbyt LLC

68 TW Alexander Drive
Research Triangle Park
Durham
NC 27713-2847
United States

Email: info@biorbyt.com, support@biorbyt.com

Phone: [+1 \(415\) 906-5211](tel:+1(415)906-5211) | Fax: [+1 \(415\) 651-8558](tel:+1(415)651-8558)

UniProt ID	Q9BZZZ, Q62230
MW	183 kDa
Tested applications	ICC, IF, IHC-P, WB
Dilution range	IHC-P: 1:100-500, IF/ICC: 1:100-500, WB: 1:200-1000
Storage	Maintain refrigerated at 2-8°C for up to 2 weeks. For long term storage store at -20°C in small aliquots to prevent freeze-thaw cycles.
Note	For research use only
Entrez	6614
NCBI	023068, 075556
Expiration Date	12 months from date of receipt.



Immunohistochemical staining of paraffin embedded mouse adrenal gland tissue using anti-CD169_Sialoadhesin (2.5 ug/ml)

Biorbyt Ltd.

7 Signet Court, Swann Road
Cambridge
CB5 8LA
United Kingdom

Email: info@biorbyt.com, support@biorbyt.com

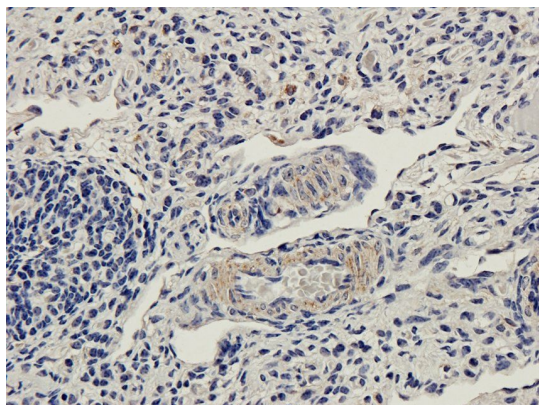
Phone: [+44 \(0\)1223 859353](tel:+44(0)1223859353) | Fax: [+1 \(415\) 651-8558](tel:+1(415)651-8558)

Biorbyt LLC

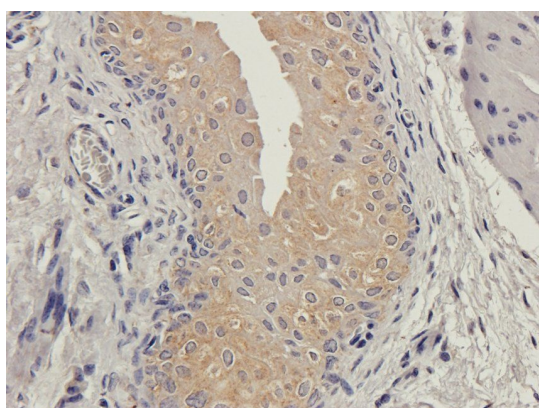
68 TW Alexander Drive
Research Triangle Park
Durham
NC 27713-2847
United States

Email: info@biorbyt.com, support@biorbyt.com

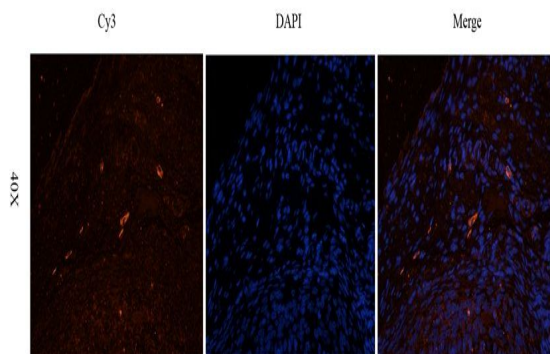
Phone: [+1 \(415\) 906-5211](tel:+1(415)906-5211) | Fax: [+1 \(415\) 651-8558](tel:+1(415)651-8558)



IHC-P staining of guinea pig ovary tissue using anti-CD169_Sialoadhesin (2.5 ug/ml)



IHC-P image of guinea pig bladder tissue using CD169_Sialoadhesin antibody (2.5 ug/ml)



Immunofluorescence image of guinea pig ovary tissue using CD169_Sialoadhesin antibody (2.5 ug/ml)

Biorbyt Ltd.

7 Signet Court, Swann Road
Cambridge
CB5 8LA
United Kingdom

Email: info@biorbyt.com, support@biorbyt.com

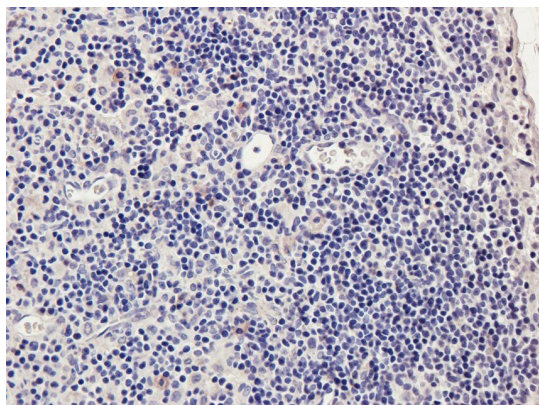
Phone: +44 (0)1223 859353 | Fax: +1 (415) 651-8558

Biorbyt LLC

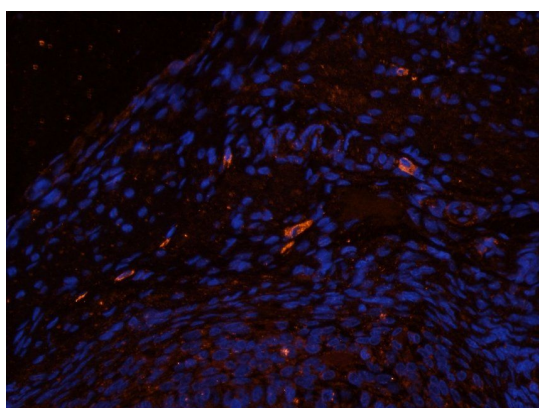
68 TW Alexander Drive
Research Triangle Park
Durham
NC 27713-2847
United States

Email: info@biorbyt.com, support@biorbyt.com

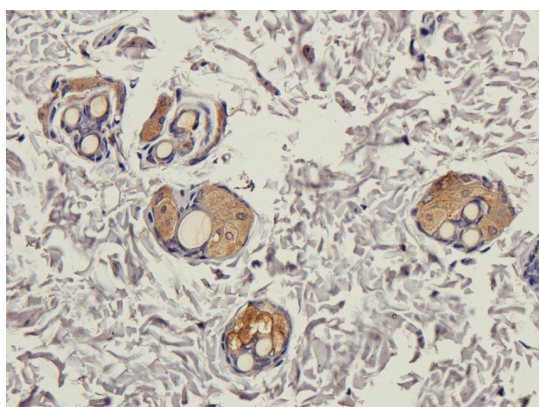
Phone: +1 (415) 906-5211 | Fax: +1 (415) 651-8558



IHC-P staining of rat lymph node tissue using anti-CD169_Sialoadhesin (2.5 ug/ml)



Immunofluorescence image of guinea pig ovary tissue using anti-CD169_Sialoadhesin (2.5 ug/ml)



Immunohistochemical staining of rat skin tissue using CD169_Sialoadhesin antibody (2.5 ug/ml)

Biorbyt Ltd.

7 Signet Court, Swann Road
Cambridge
CB5 8LA
United Kingdom

Email: info@biorbyt.com, support@biorbyt.com

Phone: [+44 \(0\)1223 859353](tel:+44(0)1223859353) | Fax: [+1 \(415\) 651-8558](tel:+1(415)651-8558)

Biorbyt LLC

68 TW Alexander Drive
Research Triangle Park
Durham
NC 27713-2847
United States

Email: info@biorbyt.com, support@biorbyt.com

Phone: [+1 \(415\) 906-5211](tel:+1(415)906-5211) | Fax: [+1 \(415\) 651-8558](tel:+1(415)651-8558)



WB analysis of rat lymph node (lane 1), rat heart (lane 2), rat bladder (lane 3), rat skin (lane 4), human breast cancer (lane 5); u251 cells (lane 6) using anti-CD169_Sialoadhesin (1 ug/ml)

Biorbyt Ltd.

7 Signet Court, Swann Road
Cambridge
CB5 8LA
United Kingdom

Email: info@biorbyt.com, support@biorbyt.com

Phone: [+44 \(0\)1223 859353](tel:+44(0)1223859353) | Fax: [+1 \(415\) 651-8558](tel:+1(415)651-8558)

Biorbyt LLC

68 TW Alexander Drive
Research Triangle Park
Durham
NC 27713-2847
United States

Email: info@biorbyt.com, support@biorbyt.com

Phone: [+1 \(415\) 906-5211](tel:+1(415)906-5211) | Fax: [+1 \(415\) 651-8558](tel:+1(415)651-8558)