

Product Datasheet

AMBRA1 Antibody (Biotin) (orb384099)

| | |
|-----------------------------|---|
| Catalog Number | orb384099 |
| Category | Antibodies |
| Description | Rabbit polyclonal antibody against AMBRA1 conjugated to Biotin. |
| Target | AMBRA1 |
| Clonality | Polyclonal |
| Species/Host | Rabbit |
| Conjugation | Biotin |
| Reactivity | Human, Rat |
| Concentration | 1 mg/ml |
| Buffer/Preservatives | 136.36mM Ethanolamine, 133.23 mM Chlorides, 9.55mM Phosphates, 9.55mM Sodium Bicarbonate. |
| Purification | Peptide Affinity Purified |
| Immunogen | Synthetic peptide of Human AMBRA1 (aa. 200-300) |
| UniProt ID | Q9C0C7 |
| MW | 142 kDa |
| Tested applications | ICC, IF, WB |
| Dilution range | WB (1:1000), ICC/IF (1:100) |

Biorbyt Ltd.

7 Signet Court, Swann Road
Cambridge
CB5 8LA
United Kingdom

Email: info@biorbyt.com, support@biorbyt.com

Phone: [+44 \(0\)1223 859353](tel:+44(0)1223859353) | Fax: [+1 \(415\) 651-8558](tel:+1(415)651-8558)

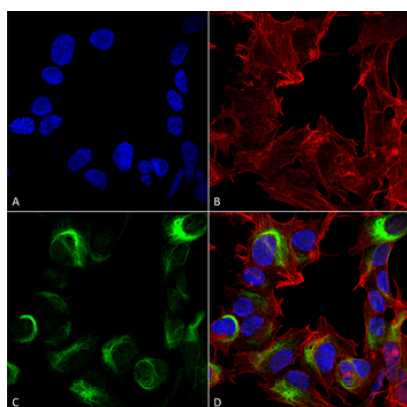
Biorbyt LLC

68 TW Alexander Drive
Research Triangle Park
Durham
NC 27713
United States

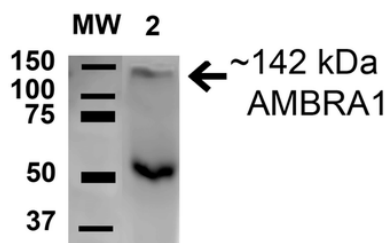
Email: info@biorbyt.com, support@biorbyt.com

Phone: [+1 \(415\) 906-5211](tel:+1(415)906-5211) | Fax: [+1 \(415\) 651-8558](tel:+1(415)651-8558)

| | |
|--------------------------|---|
| Application notes | A 1:1000 dilution was sufficient for detection of AMBRA1 in 15 µg of Rat Brain Lysates by ECL immunoblot analysis using goat anti-rabbit IgG:HRP as the secondary antibody. |
| Specificity | Detects ~142 kDa. |
| Storage | Conjugated antibodies should be stored according to the product label |
| Note | For research use only |
| Entrez | 55626 |
| NCBI | NP_001254711.1 |
| Expiration Date | 12 months from date of receipt. |



Immunocytochemistry/Immunofluorescence analysis using Rabbit Anti-AMBRA1 Polyclonal Antibody. Tissue: Neuroblastoma cell line (SK-N-BE). Species: Human. Fixation: 4% Formaldehyde for 15 min at RT. Primary Antibody: Rabbit Anti-AMBRA1 Polyclonal Antibody at 1:100 for 60 min at RT. Secondary Antibody: Goat Anti-Rabbit ATTO 488 at 1:200 for 60 min at RT. Counterstain: Phalloidin Texas Red F-Actin stain; DAPI (blue) nuclear stain at 1:1000, 1:5000 for 60 min at RT, 5 min at RT. Localization: Cytoplasmic Vesicle, Autophagosome. Magnification: 60X. (A) DAPI (blue) nuclear stain (B) Phalloidin Texas Red F-Actin stain (C) AMBRA1 Antibody (D) Composite.



Western blot analysis of Rat Brain cell lysates showing detection of 142.5 kDa AMBRA1 protein using Rabbit Anti-AMBRA1 Polyclonal Antibody. Lane 1: Molecular Weight Ladder (MW). Lane 2: Rat Brain cell lysates. Load: 15 µg. Block: 5% Skim Milk in 1X TBST. Primary Antibody: Rabbit Anti-AMBRA1 Polyclonal Antibody at 1:1000 for 1 hour at RT. Secondary Antibody: Goat Anti-Rabbit HRP at 1:2000 for 60 min at RT. Color Development: ECL solution for 6 min in RT. Predicted/Observed Size: 142.5 kDa. Other Band (s): 50 kDa.

Biorbyt Ltd.

7 Signet Court, Swann Road
Cambridge
CB5 8LA
United Kingdom

Email: info@biorbyt.com, support@biorbyt.com
Phone: +44 (0)1223 859353 | Fax: +1 (415) 651-8558

Biorbyt LLC

68 TW Alexander Drive
Research Triangle Park
Durham
NC 27713
United States

Email: info@biorbyt.com, support@biorbyt.com
Phone: +1 (415) 906-5211 | Fax: +1 (415) 651-8558