

## Product Datasheet

### ENaC alpha Antibody (APC) (orb383810)

<b>Catalog Number</b>	orb383810
<b>Category</b>	Antibodies
<b>Description</b>	Mouse monoclonal antibody against ENaC alpha conjugated to APC.
<b>Target</b>	ENaC alpha
<b>Clonality</b>	Monoclonal
<b>Species/Host</b>	Mouse
<b>Isotype</b>	IgG1
<b>Conjugation</b>	APC
<b>Reactivity</b>	Mouse, Rat
<b>Concentration</b>	1 mg/ml
<b>Buffer/Preservatives</b>	95.46mM Phosphate, 2.48mM MES and 2mM EDTA
<b>Purification</b>	Protein G Purified
<b>Immunogen</b>	Synthetic peptide from the N-terminal of Rat ENaC alpha (aa. 46-68)
<b>UniProt ID</b>	<b>Q6IRJ1</b>
<b>MW</b>	85kDa
<b>Tested applications</b>	IHC, WB
<b>Dilution range</b>	WB (1:1000); IHC (1:150)

#### Biorbyt Ltd.

7 Signet Court, Swann Road  
Cambridge  
CB5 8LA  
United Kingdom

Email: [info@biorbyt.com](mailto:info@biorbyt.com), [support@biorbyt.com](mailto:support@biorbyt.com)

Phone: [+44 \(0\)1223 859353](tel:+44(0)1223859353) | Fax: [+1 \(415\) 651-8558](tel:+1(415)651-8558)

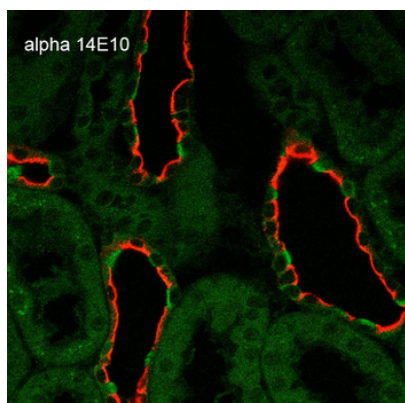
#### Biorbyt LLC

68 TW Alexander Drive  
Research Triangle Park  
Durham  
NC 27713  
United States

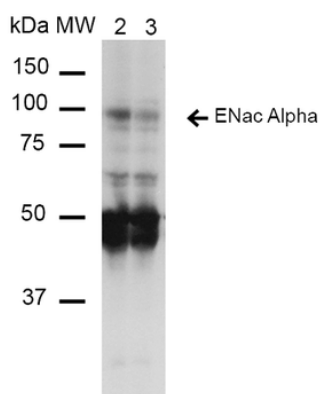
Email: [info@biorbyt.com](mailto:info@biorbyt.com), [support@biorbyt.com](mailto:support@biorbyt.com)

Phone: [+1 \(415\) 906-5211](tel:+1(415)906-5211) | Fax: [+1 \(415\) 651-8558](tel:+1(415)651-8558)

<b>Application notes</b>	A 1:1000 dilution was sufficient for detection of ENaC alpha in 15 µg of Mouse whole kidney lysate by ECL immunoblot analysis using goat anti-mouse IgG:HRP as the secondary antibody.
<b>Specificity</b>	Detects ~85kDa.
<b>Clone Number</b>	1.4E+11
<b>Storage</b>	Conjugated antibodies should be stored according to the product label
<b>Note</b>	For research use only
<b>Entrez</b>	<b>25122</b>
<b>NCBI</b>	<b>NP_113736</b>
<b>Expiration Date</b>	12 months from date of receipt.



Immunohistochemistry analysis using Mouse Anti-ENaC alpha Monoclonal Antibody, Clone 14E10. Tissue: Kidney. Species: Rat. Fixation: Paraffin-embedded formalin-fixed. Primary Antibody: Mouse Anti-ENaC alpha Monoclonal Antibody at 1:100. Secondary Antibody: Goat Anti-Mouse ATTO 488 (green). Localization: Intercalated cells. Aquaporin 2 Antibody staining in red.



Western Blot analysis of Mouse Whole kidney homogenates showing detection of ~85kDa ENaC alpha protein using Mouse Anti-ENaC alpha Monoclonal Antibody, Clone 14E10. Lane 1: Molecular Weight Ladder (MW). Lane 2: Low-salt diet. Lane 3: Normal-salt diet. Load: 20 µg. Primary Antibody: Mouse Anti-ENaC alpha Monoclonal Antibody at 1:1000. Predicted/Observed Size: ~85kDa.

**Biorbyt Ltd.**

7 Signet Court, Swann Road  
Cambridge  
CB5 8LA  
United Kingdom

Email: [info@biorbyt.com](mailto:info@biorbyt.com), [support@biorbyt.com](mailto:support@biorbyt.com)  
Phone: +44 (0)1223 859353 | Fax: +1 (415) 651-8558

**Biorbyt LLC**

68 TW Alexander Drive  
Research Triangle Park  
Durham  
NC 27713  
United States

Email: [info@biorbyt.com](mailto:info@biorbyt.com), [support@biorbyt.com](mailto:support@biorbyt.com)  
Phone: +1 (415) 906-5211 | Fax: +1 (415) 651-8558