

Product Datasheet

ENaC alpha Antibody (APC) (orb383756)

Catalog Number	orb383756
Category	Antibodies
Description	Mouse monoclonal antibody against ENaC alpha conjugated to APC.
Target	ENaC alpha
Clonality	Monoclonal
Species/Host	Mouse
Isotype	IgG2b
Conjugation	APC
Reactivity	Mouse, Rat
Concentration	1 mg/ml
Buffer/Preservatives	95.46mM Phosphate, 2.48mM MES and 2mM EDTA
Purification	Protein G Purified
Immunogen	Synthetic peptide from the N-terminal of Rat ENaC alpha (aa. 46-68)
UniProt ID	Q6IRJ1
MW	85kDa
Tested applications	IHC, WB
Dilution range	WB (1:1000); IHC (1:150)

Biorbyt Ltd.

7 Signet Court, Swann Road
Cambridge
CB5 8LA
United Kingdom

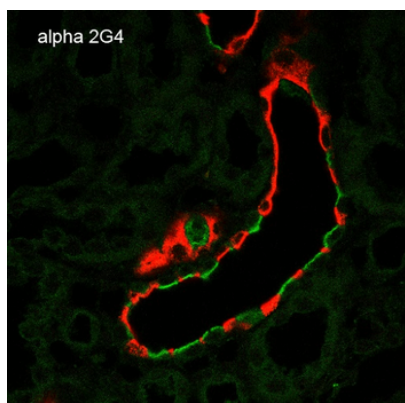
Email: info@biorbyt.com, support@biorbyt.com
Phone: [+44 \(0\)1223 859353](tel:+44(0)1223859353) | Fax: [+1 \(415\) 651-8558](tel:+1(415)651-8558)

Biorbyt LLC

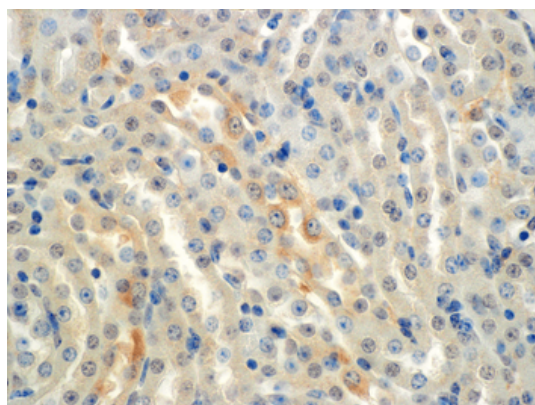
68 TW Alexander Drive
Research Triangle Park
Durham
NC 27713
United States

Email: info@biorbyt.com, support@biorbyt.com
Phone: [+1 \(415\) 906-5211](tel:+1(415)906-5211) | Fax: [+1 \(415\) 651-8558](tel:+1(415)651-8558)

Application notes	A 1:1000 dilution was sufficient for detection of ENaC alpha in 15 µg of Mouse whole kidney lysate by ECL immunoblot analysis using goat anti-mouse IgG:HRP as the secondary antibody.
Specificity	Detects ~85kDa.
Clone Number	2G4
Storage	Conjugated antibodies should be stored according to the product label
Note	For research use only
Entrez	25122
NCBI	NP_113736
Expiration Date	12 months from date of receipt.



Immunohistochemistry analysis using Mouse Anti-ENaC alpha Monoclonal Antibody, Clone 2G4. Tissue: Kidney. Species: Rat. Fixation: Paraffin-embedded formalin-fixed. Primary Antibody: Mouse Anti-ENaC alpha Monoclonal Antibody at 1:100. Secondary Antibody: Goat Anti-Mouse ATTO 488 (green). Localization: Intercalated cells. Aquaporin 2 Antibody staining in red.



Immunohistochemistry analysis using Mouse Anti-ENaC alpha Monoclonal Antibody, Clone 2G4. Tissue: Kidney (cortex). Species: Mouse. Primary Antibody: Mouse Anti-ENaC alpha Monoclonal Antibody at 1:150. Localization: Collecting duct principal cells. Magnification: 60X.

Biorbyt Ltd.

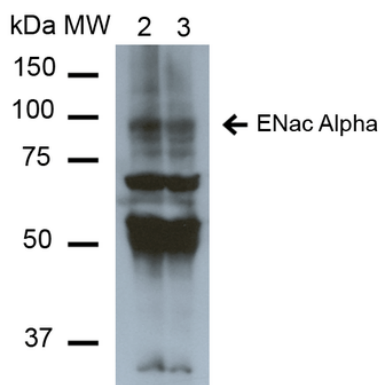
7 Signet Court, Swann Road
Cambridge
CB5 8LA
United Kingdom

Email: info@biorbyt.com, support@biorbyt.com
Phone: [+44 \(0\)1223 859353](tel:+44(0)1223859353) | Fax: [+1 \(415\) 651-8558](tel:+1(415)651-8558)

Biorbyt LLC

68 TW Alexander Drive
Research Triangle Park
Durham
NC 27713
United States

Email: info@biorbyt.com, support@biorbyt.com
Phone: [+1 \(415\) 906-5211](tel:+1(415)906-5211) | Fax: [+1 \(415\) 651-8558](tel:+1(415)651-8558)



Western Blot analysis of Mouse Whole kidney homogenates showing detection of ~85kDa ENaC alpha protein using Mouse Anti-ENaC alpha Monoclonal Antibody, Clone 2G4. Lane 1: Molecular Weight Ladder (MW). Lane 2: Low-salt diet. Lane 3: Normal-salt diet. Load: 20 µg. Primary Antibody: Mouse Anti-ENaC alpha Monoclonal Antibody at 1:1000. Predicted/Observed Size: ~85kDa.

Biorbyt Ltd.

7 Signet Court, Swann Road
Cambridge
CB5 8LA
United Kingdom

Email: info@biorbyt.com, support@biorbyt.com
Phone: [+44 \(0\)1223 859353](tel:+44(0)1223859353) | Fax: [+1 \(415\) 651-8558](tel:+1(415)651-8558)

Biorbyt LLC

68 TW Alexander Drive
Research Triangle Park
Durham
NC 27713
United States

Email: info@biorbyt.com, support@biorbyt.com
Phone: [+1 \(415\) 906-5211](tel:+1(415)906-5211) | Fax: [+1 \(415\) 651-8558](tel:+1(415)651-8558)