

Product Datasheet

14-3-3 zeta/delta Rabbit Polyclonal Antibody (orb382906)

Catalog Number	orb382906
Category	Antibodies
Description	14-3-3 zeta/delta Rabbit Polyclonal Antibody
Target	14-3-3 zeta/delta
Clonality	Polyclonal
Species/Host	Rabbit
Isotype	IgG
Conjugation	Unconjugated
Reactivity	Human, Mouse, Porcine, Rat
Form/Appearance	10 mM PBS, 0.02% sodium azide
Concentration	- 100 µg (in 200 µl): 0.5 mg/ml- 200 µg (in 400 µl): 0.5 mg/ml
Purity	Polyclonal antibodies are purified by peptide affinity chromatography
Immunogen	KLH conjugated synthetic peptide derived from human 14-3-3 zeta/delta. Please contact us for the exact immunogen sequence. The peptide is available as orb13048.
UniProt ID	P63102, P63104, P63101
MW	28 kDa
Tested applications	ICC, IF, IHC-P, WB

Biorbyt Ltd.

7 Signet Court, Swann Road
Cambridge
CB5 8LA
United Kingdom

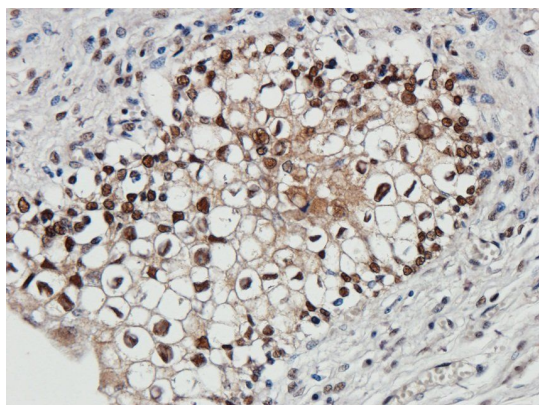
Email: info@biorbyt.com, support@biorbyt.com
Phone: [+44 \(0\)1223 859353](tel:+44(0)1223859353) | Fax: [+1 \(415\) 651-8558](tel:+1(415)651-8558)

Biorbyt LLC

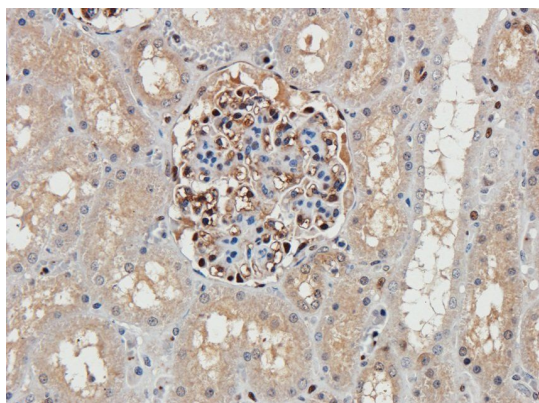
68 TW Alexander Drive
Research Triangle Park
Durham
NC 27713
United States

Email: info@biorbyt.com, support@biorbyt.com
Phone: [+1 \(415\) 906-5211](tel:+1(415)906-5211) | Fax: [+1 \(415\) 651-8558](tel:+1(415)651-8558)

Dilution range	IF/ICC: 1:100-800, IHC-P: 1:100-800, WB: 1:200-2000
Storage	Maintain refrigerated at 2-8°C for up to 2 weeks. For long term storage store at -20°C in small aliquots to prevent freeze-thaw cycles.
Note	For research use only
Entrez	7534
NCBI	001135699, 001129171
Expiration Date	12 months from date of receipt.



Immunohistochemical staining of paraffin embedded pig uterus tissue using anti- 14-3-3 zeta/delta (primary antibody at 2.5 ug/ml)



Immunohistochemical staining of paraffin embedded pig kidney tissue using 14-3-3 zeta/delta antibody (primary antibody at 2.5 ug/ml)

Biorbyt Ltd.

7 Signet Court, Swann Road
Cambridge
CB5 8LA
United Kingdom

Email: info@biorbyt.com, support@biorbyt.com

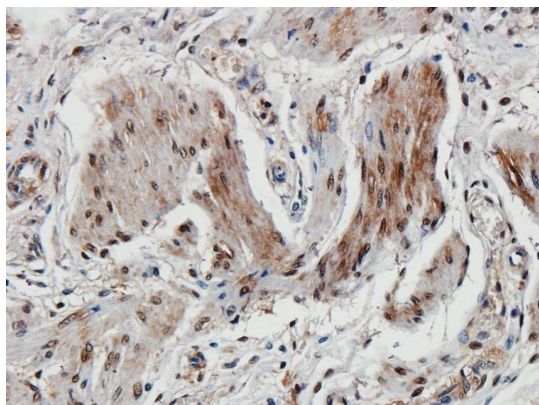
Phone: +44 (0)1223 859353 | Fax: +1 (415) 651-8558

Biorbyt LLC

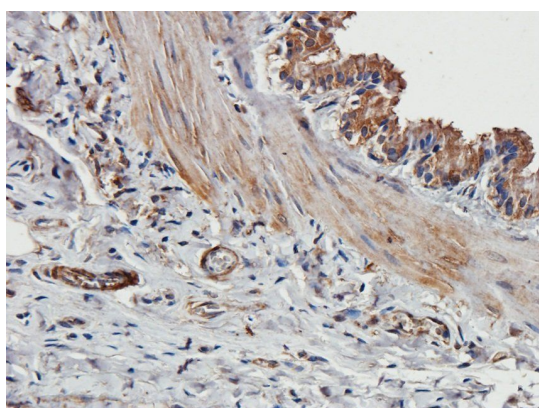
68 TW Alexander Drive
Research Triangle Park
Durham
NC 27713
United States

Email: info@biorbyt.com, support@biorbyt.com

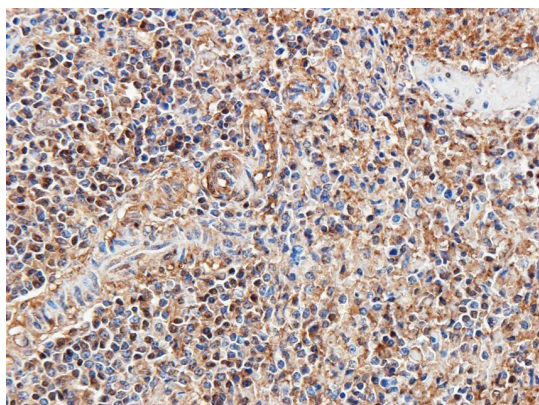
Phone: +1 (415) 906-5211 | Fax: +1 (415) 651-8558



IHC-P staining of pig uterus tissue using anti- 14-3-3 zeta/delta (dilution at 2.5 ug/ml)



IHC-P image of rat lung tissue using 14-3-3 zeta/delta antibody (dilution of primary antibody at 2.5 ug/ml)



Immunohistochemical staining of paraffin embedded pig spleen tissue using anti- 14-3-3 zeta/delta (primary antibody at 2.5 ug/ml)

Biorbyt Ltd.

7 Signet Court, Swann Road
Cambridge
CB5 8LA
United Kingdom

Email: info@biorbyt.com, support@biorbyt.com

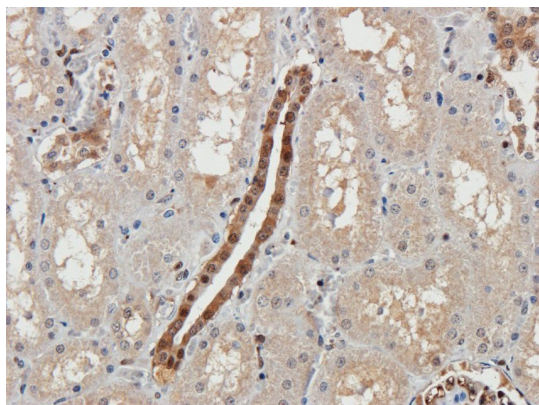
Phone: [+44 \(0\)1223 859353](tel:+44(0)1223859353) | Fax: [+1 \(415\) 651-8558](tel:+1(415)651-8558)

Biorbyt LLC

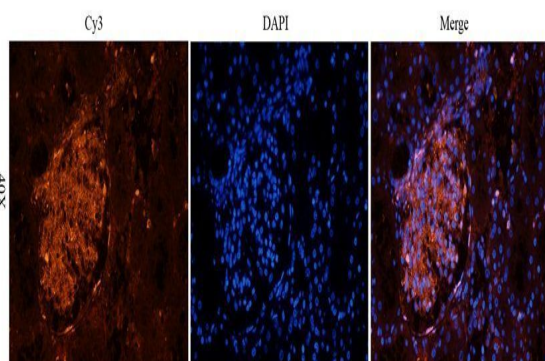
68 TW Alexander Drive
Research Triangle Park
Durham
NC 27713
United States

Email: info@biorbyt.com, support@biorbyt.com

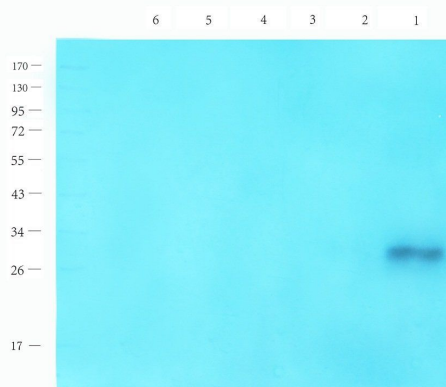
Phone: [+1 \(415\) 906-5211](tel:+1(415)906-5211) | Fax: [+1 \(415\) 651-8558](tel:+1(415)651-8558)



IHC-P staining of pig kidney tissue using 14-3-3 zeta/delta antibody (dilution at 2.5 ug/ml)



IF analysis of pig kidney tissue using anti- 14-3-3 zeta/delta (dilution of primary antibody at 2.5 ug/ml)



Western blot analysis of mouse spleen (lane 1), mouse uterus (lane 2), rat large intestines (lane 3), human thyroid cancer (lane 4), human breast cancer (lane 5), Hela cells (slane 6) using 14-3-3 zeta/delta antibody (1 ug/ml)

Biorbyt Ltd.

7 Signet Court, Swann Road
Cambridge
CB5 8LA
United Kingdom

Email: info@biorbyt.com, support@biorbyt.com

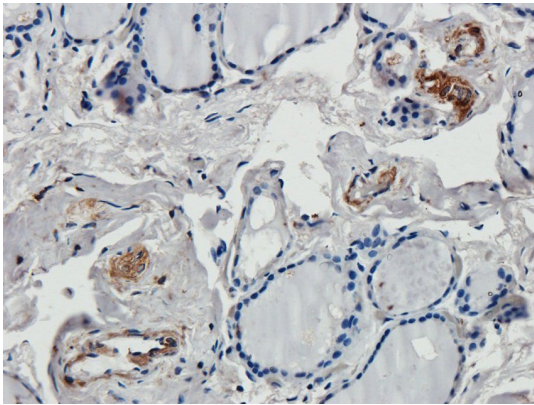
Phone: [+44 \(0\)1223 859353](tel:+44(0)1223859353) | Fax: [+1 \(415\) 651-8558](tel:+1(415)651-8558)

Biorbyt LLC

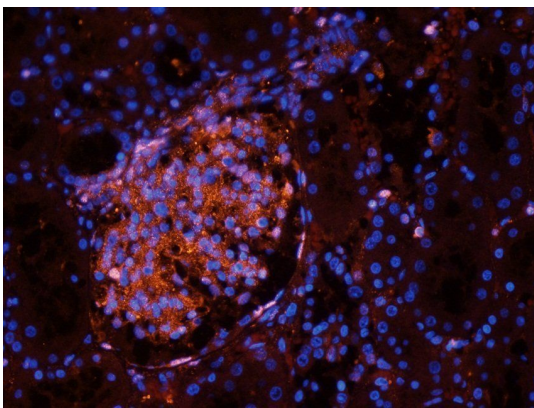
68 TW Alexander Drive
Research Triangle Park
Durham
NC 27713
United States

Email: info@biorbyt.com, support@biorbyt.com

Phone: [+1 \(415\) 906-5211](tel:+1(415)906-5211) | Fax: [+1 \(415\) 651-8558](tel:+1(415)651-8558)



Immunohistochemical staining of paraffin embedded human thyroid cancer tissue using 14-3-3 zeta/delta antibody (primary antibody at 2.5 ug/ml)



Immunofluorescence image of pig kidney tissue using anti- 14-3-3 zeta/delta (dilution at 2.5 ug/ml)

Biorbyt Ltd.

7 Signet Court, Swann Road
Cambridge
CB5 8LA
United Kingdom

Email: info@biorbyt.com, support@biorbyt.com

Phone: [+44 \(0\)1223 859353](tel:+44(0)1223859353) | Fax: [+1 \(415\) 651-8558](tel:+1(415)651-8558)

Biorbyt LLC

68 TW Alexander Drive
Research Triangle Park
Durham
NC 27713
United States

Email: info@biorbyt.com, support@biorbyt.com

Phone: [+1 \(415\) 906-5211](tel:+1(415)906-5211) | Fax: [+1 \(415\) 651-8558](tel:+1(415)651-8558)