

## Product Datasheet

### Cytokeratin-pan Antibody (orb382594)

<b>Catalog Number</b>	orb382594
<b>Category</b>	Antibodies
<b>Description</b>	The Cytokeratin-pan Antibody is suitable for WB. It is a Polyclonal, Unconjugated antibody which raised against KLH-conjugated synthetic peptide encompassing a sequence within the center region of human Cytokeratin-pan. The exact sequence is proprietary. Purification: The antibody was purified by immunogen affinity chromatography.
<b>Clonality</b>	Polyclonal
<b>Species/Host</b>	Rabbit
<b>Conjugation</b>	Unconjugated
<b>Reactivity</b>	Bovine, Canine, Human, Mouse, Rat
<b>Form/Appearance</b>	Liquid in 0.42% Potassium phosphate, 0.87% Sodium chloride, pH 7.3, 30% glycerol, and 0.01% sodium azide.
<b>Purification</b>	The antibody was purified by immunogen affinity chromatography.
<b>Immunogen</b>	KLH-conjugated synthetic peptide encompassing a sequence within the center region of human Cytokeratin-pan. The exact sequence is proprietary.
<b>UniProt ID</b>	<b>Q01546, Q5XKE5, P02538, Q7RTS7, P13647, Q3TTY5, Q6P6Q2, Q6IG02, Q14CN4, O95678, P05787, P48668, P08729, Q3SY84, P35908, Q3UV17, Q86Y46, Q922U2, P04259, P12035, Q9NSB2</b>
<b>Tested applications</b>	WB
<b>Dilution range</b>	WB: 1:500:2000
<b>Specificity</b>	Recognizes endogenous levels of Cytokeratin-pan protein.

**Biorbyt Ltd.**

7 Signet Court, Swann Road  
Cambridge  
CB5 8LA  
United Kingdom

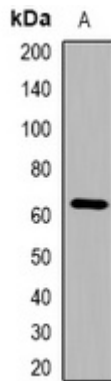
Email: [info@biorbyt.com](mailto:info@biorbyt.com), [support@biorbyt.com](mailto:support@biorbyt.com)  
Phone: [+44 \(0\)1223 859353](tel:+44(0)1223859353) | Fax: [+1 \(415\) 651-8558](tel:+1(415)651-8558)

**Biorbyt LLC**

68 TW Alexander Drive  
Research Triangle Park  
Durham  
NC 27713  
United States

Email: [info@biorbyt.com](mailto:info@biorbyt.com), [support@biorbyt.com](mailto:support@biorbyt.com)  
Phone: [+1 \(415\) 906-5211](tel:+1(415)906-5211) | Fax: [+1 \(415\) 651-8558](tel:+1(415)651-8558)

<b>Antibody Type</b>	Primary Antibody
<b>Storage</b>	Maintain refrigerated at 2-8°C for up to 2 weeks. For long term storage store at -20°C in small aliquots to prevent freeze-thaw cycles.
<b>Note</b>	For research use only
<b>Entrez</b>	<b>3849, 3852, 121391, 3850, 3854, 9119, 406228, 3853, 140807, 51350, 16681, 110308, 112802, 286887, 3890, 3856, 77055, 319101, 338785, 369017</b>
<b>Expiration Date</b>	12 months from date of receipt.



Western blot analysis of Cytokeratin-pan expression in mouse lung (A) whole cell lysates. (Predicted band size: 65; 64; 62; 60 kD; Observed band size: 65 kD)

**Biorbyt Ltd.**

7 Signet Court, Swann Road  
Cambridge  
CB5 8LA  
United Kingdom

Email: [info@biorbyt.com](mailto:info@biorbyt.com), [support@biorbyt.com](mailto:support@biorbyt.com)

Phone: [+44 \(0\)1223 859353](tel:+44(0)1223859353) | Fax: [+1 \(415\) 651-8558](tel:+1(415)651-8558)

**Biorbyt LLC**

68 TW Alexander Drive  
Research Triangle Park  
Durham  
NC 27713  
United States

Email: [info@biorbyt.com](mailto:info@biorbyt.com), [support@biorbyt.com](mailto:support@biorbyt.com)

Phone: [+1 \(415\) 906-5211](tel:+1(415)906-5211) | Fax: [+1 \(415\) 651-8558](tel:+1(415)651-8558)