

Product Datasheet

Collagen 4 alpha 1 Rabbit Polyclonal Antibody (orb382133)

Catalog Number	orb382133
Category	Antibodies
Description	Collagen 4 alpha 1 Rabbit Polyclonal Antibody is an unconjugated antibody that specifically recognizes Collagen 4 alpha 1. Generated against a KLH conjugated synthetic peptide derived from human Collagen 4 alpha 1. The peptide is available as orb13012. It is supplied in liquid form and exhibits reactivity with Human, Mouse and Rat samples. The suitable applications for this antibody are ICC, IF, IHC-P and WB.
Target	Collagen 4 alpha 1
Clonality	Polyclonal
Species/Host	Rabbit
Isotype	IgG
Conjugation	Unconjugated
Reactivity	Human, Mouse, Rat
Form/Appearance	10 mM PBS, 0.02% sodium azide
Concentration	- 100 µg (in 200 µl): 0.5 mg/ml- 200 µg (in 400 µl): 0.5 mg/ml
Purity	Polyclonal antibodies are purified by peptide affinity chromatography
Immunogen	KLH conjugated synthetic peptide derived from human Collagen 4 alpha 1. Please contact us for the exact immunogen sequence. The peptide is available as orb13012.

Biorbyt Ltd.

7 Signet Court, Swann Road
Cambridge
CB5 8LA
United Kingdom

Email: info@biorbyt.com, support@biorbyt.com

Phone: [+44 \(0\)1223 859353](tel:+44(0)1223859353) | Fax: [+1 \(415\) 651-8558](tel:+1(415)651-8558)

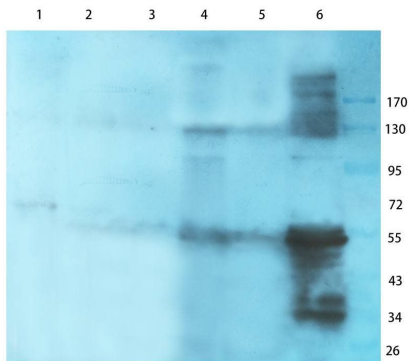
Biorbyt LLC

68 TW Alexander Drive
Research Triangle Park
Durham
NC 27713-2847
United States

Email: info@biorbyt.com, support@biorbyt.com

Phone: [+1 \(415\) 906-5211](tel:+1(415)906-5211) | Fax: [+1 \(415\) 651-8558](tel:+1(415)651-8558)

UniProt ID	P02463, F1MA59, P02462
MW	161 kDa
Tested applications	ICC, IF, IHC-P, WB
Dilution range	IF/ICC: 1:100-600, IHC-P: 1:100-600, WB: 1:200-1000
Storage	Maintain refrigerated at 2-8°C for up to 2 weeks. For long term storage store at -20°C in small aliquots to prevent freeze-thaw cycles.
Note	For research use only
Entrez	1282
NCBI	001290039, 001303110
Expiration Date	12 months from date of receipt.



WB analysis of mouse brain (lane 1), mouse spinal cord (lane 2), mouse colon (lane 3), rat bladder (lane 4), rat ovary (lane 5), U251 cells (lane 6) using Collagen 4 alpha 1 antibody (1 ug/ml)

Biorbyt Ltd.

7 Signet Court, Swann Road
Cambridge
CB5 8LA
United Kingdom

Email: info@biorbyt.com, support@biorbyt.com

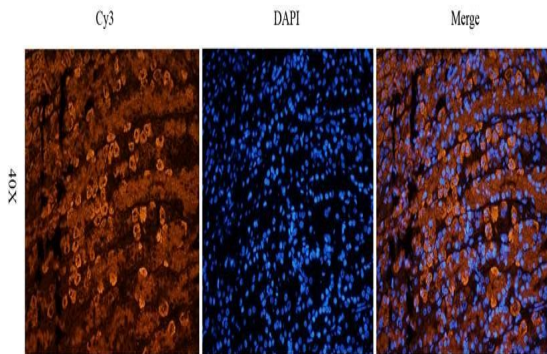
Phone: [+44 \(0\)1223 859353](tel:+44(0)1223859353) | Fax: [+1 \(415\) 651-8558](tel:+1(415)651-8558)

Biorbyt LLC

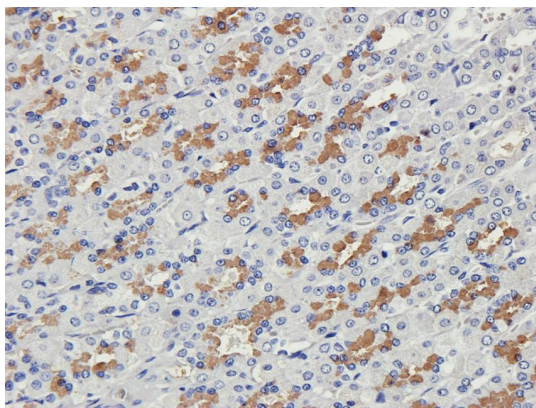
68 TW Alexander Drive
Research Triangle Park
Durham
NC 27713-2847
United States

Email: info@biorbyt.com, support@biorbyt.com

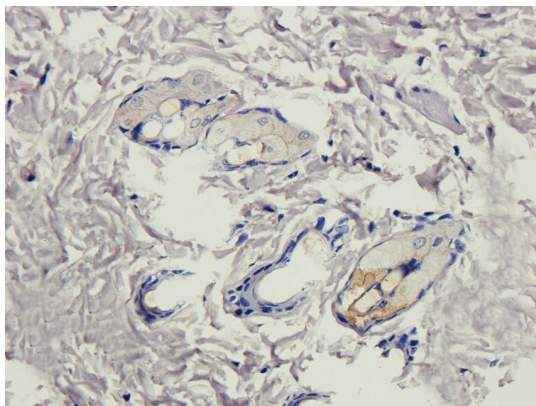
Phone: [+1 \(415\) 906-5211](tel:+1(415)906-5211) | Fax: [+1 \(415\) 651-8558](tel:+1(415)651-8558)



Immunofluorescence image of rat stomach tissue using anti-Collagen 4 alpha 1 (2.5 ug/ml)



IHC-P image of rat stomach tissue using anti-Collagen 4 alpha 1 (2.5 ug/ml)



Immunohistochemical staining of rat skin tissue using Collagen 4 alpha 1 antibody (2.5 ug/ml)

Biorbyt Ltd.

7 Signet Court, Swann Road
Cambridge
CB5 8LA
United Kingdom

Email: info@biorbyt.com, support@biorbyt.com

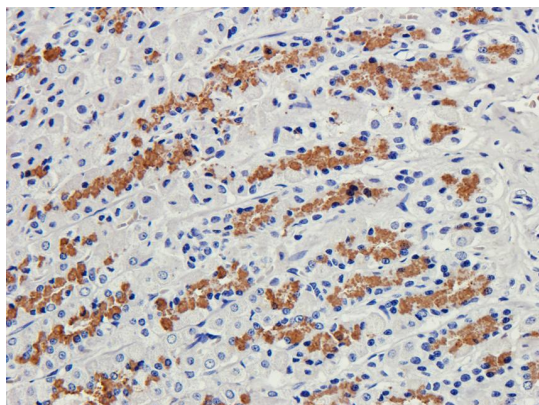
Phone: +44 (0)1223 859353 | Fax: +1 (415) 651-8558

Biorbyt LLC

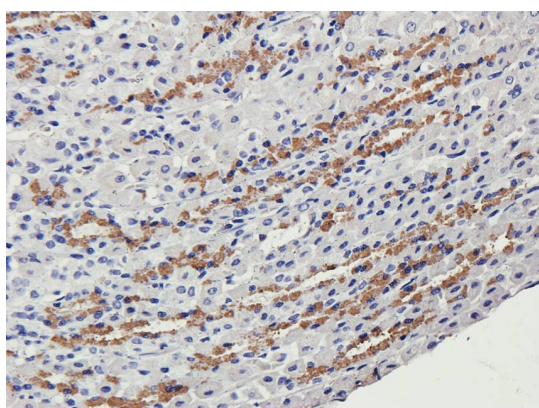
68 TW Alexander Drive
Research Triangle Park
Durham
NC 27713-2847
United States

Email: info@biorbyt.com, support@biorbyt.com

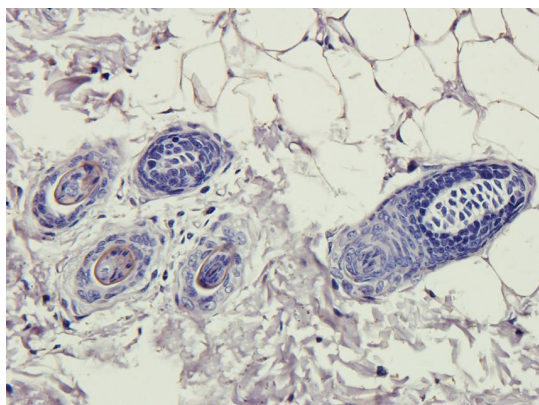
Phone: +1 (415) 906-5211 | Fax: +1 (415) 651-8558



Immunohistochemical staining of paraffin embedded rat stomach tissue using anti-Collagen 4 alpha 1 (2.5 ug/ml)



Immunohistochemical staining of rat stomach tissue using anti-Collagen 4 alpha 1 (2.5 ug/ml)



IHC-P staining of rat skin tissue using Collagen 4 alpha 1 antibody (2.5 ug/ml)

Biorbyt Ltd.

7 Signet Court, Swann Road
Cambridge
CB5 8LA
United Kingdom

Email: info@biorbyt.com, support@biorbyt.com

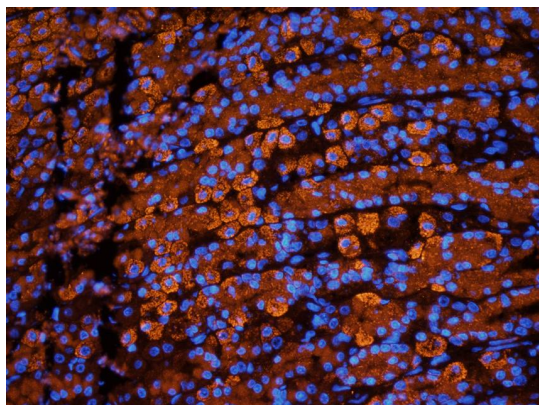
Phone: +44 (0)1223 859353 | Fax: +1 (415) 651-8558

Biorbyt LLC

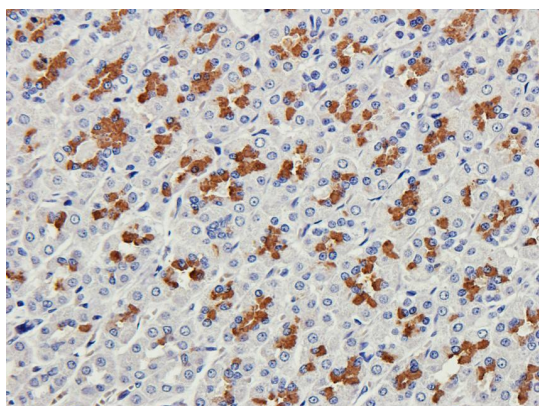
68 TW Alexander Drive
Research Triangle Park
Durham
NC 27713-2847
United States

Email: info@biorbyt.com, support@biorbyt.com

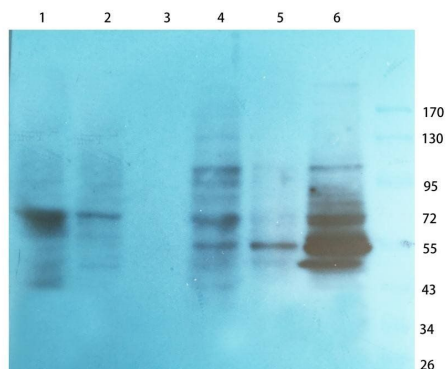
Phone: +1 (415) 906-5211 | Fax: +1 (415) 651-8558



IF analysis of rat stomach tissue using Collagen 4 alpha 1 antibody (2.5 ug/ml)



IHC-P image of rat stomach tissue using Collagen 4 alpha 1 antibody (2.5 ug/ml)



Western blot analysis of mouse brain (lane 1), mouse spinal cord (lane 2), mouse colon (lane 3), rat bladder (lane 4), rat ovary (lane 5), U251 cells (lane 6) using Collagen 4 alpha 1 antibody (1 ug/ml)

Biorbyt Ltd.

7 Signet Court, Swann Road
Cambridge
CB5 8LA
United Kingdom

Email: info@biorbyt.com, support@biorbyt.com

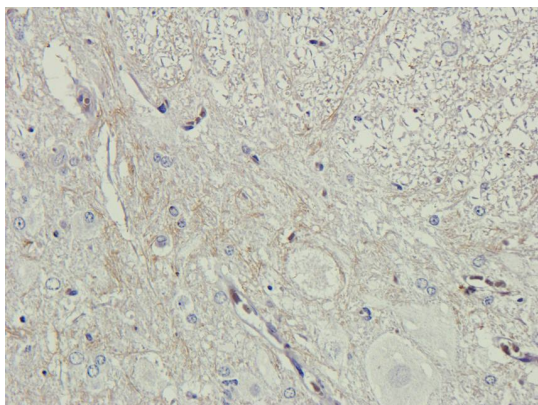
Phone: +44 (0)1223 859353 | Fax: +1 (415) 651-8558

Biorbyt LLC

68 TW Alexander Drive
Research Triangle Park
Durham
NC 27713-2847
United States

Email: info@biorbyt.com, support@biorbyt.com

Phone: +1 (415) 906-5211 | Fax: +1 (415) 651-8558



Immunohistochemical staining of paraffin embedded rat spinal cord tissue using anti-Collagen 4 alpha 1 (2.5 ug/ml)

Biorbyt Ltd.

7 Signet Court, Swann Road
Cambridge
CB5 8LA
United Kingdom

Email: info@biorbyt.com, support@biorbyt.com

Phone: [+44 \(0\)1223 859353](tel:+44(0)1223859353) | Fax: [+1 \(415\) 651-8558](tel:+1(415)651-8558)

Biorbyt LLC

68 TW Alexander Drive
Research Triangle Park
Durham
NC 27713-2847
United States

Email: info@biorbyt.com, support@biorbyt.com

Phone: [+1 \(415\) 906-5211](tel:+1(415)906-5211) | Fax: [+1 \(415\) 651-8558](tel:+1(415)651-8558)