

Product Datasheet

ATF6 Rabbit Polyclonal Antibody (orb381900)

Catalog Number	orb381900
Category	Antibodies
Description	ATF6 Rabbit Polyclonal Antibody
Target	ATF6
Clonality	Polyclonal
Species/Host	Rabbit
Isotype	IgG
Conjugation	Unconjugated
Reactivity	Human, Mouse, Rat
Form/Appearance	10 mM PBS, 0.02% sodium azide
Concentration	- 100 µg (in 200 µl): 0.5 mg/ml- 200 µg (in 400 µl): 0.5 mg/ml
Purity	Polyclonal antibodies are purified by peptide affinity chromatography
Immunogen	KLH conjugated synthetic peptide derived from human ATF6. Please contact us for the exact immunogen sequence. The peptide is available as orb13008.
MW	142 kDa
Tested applications	IHC-P, WB
Dilution range	IHC-P: 1:50-400, WB: 1:200-1000
Storage	Maintain refrigerated at 2-8°C for up to 2 weeks. For long term storage store at -20°C in small aliquots to prevent freeze-thaw cycles.

Biorbyt Ltd.

7 Signet Court, Swann Road
Cambridge
CB5 8LA
United Kingdom

Email: info@biorbyt.com, support@biorbyt.com

Phone: [+44 \(0\)1223 859353](tel:+44(0)1223859353) | Fax: [+1 \(415\) 651-8558](tel:+1(415)651-8558)

Biorbyt LLC

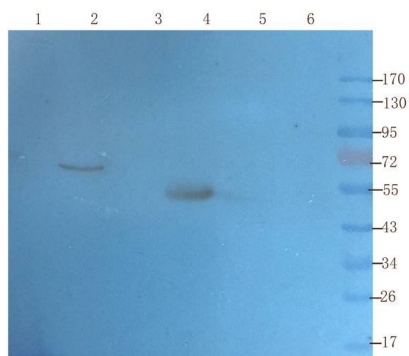
68 TW Alexander Drive
Research Triangle Park
Durham
NC 27713
United States

Email: info@biorbyt.com, support@biorbyt.com

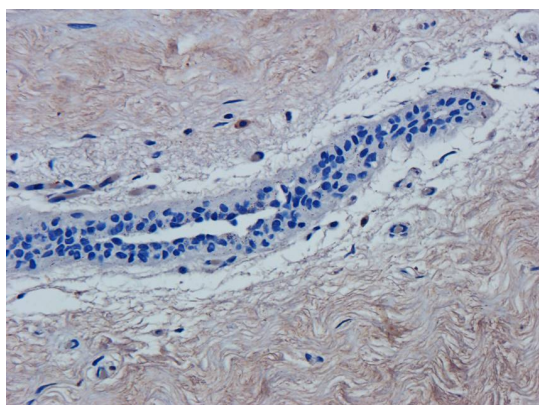
Phone: [+1 \(415\) 906-5211](tel:+1(415)906-5211) | Fax: [+1 \(415\) 651-8558](tel:+1(415)651-8558)

Note For research use only

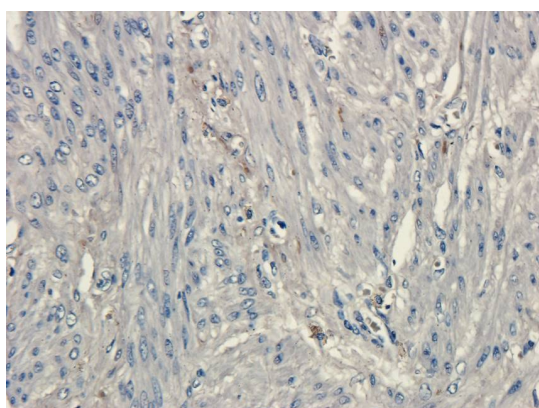
Expiration Date 12 months from date of receipt.



Western blot analysis of mouse testis (lane 1), mouse liver (lane 2), mouse brain (lane 3), human breast cancer (lane 4), Hela cells (lane 5), 293T cells (lane 6) using ATF6 antibody (1 ug/ml)



IHC-P image of human breast fibrous tumour tissue using ATF6 antibody (dilution of primary antibody at 2.5 ug/ml)



IHC-P staining of human endometrial carcinoma tissue using ATF6 antibody (dilution at 2.5 ug/ml)

Biorbyt Ltd.

7 Signet Court, Swann Road
Cambridge
CB5 8LA
United Kingdom

Email: info@biorbyt.com, support@biorbyt.com

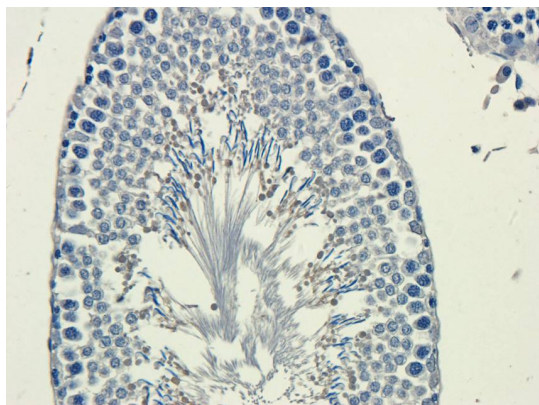
Phone: [+44 \(0\)1223 859353](tel:+44(0)1223859353) | Fax: [+1 \(415\) 651-8558](tel:+1(415)651-8558)

Biorbyt LLC

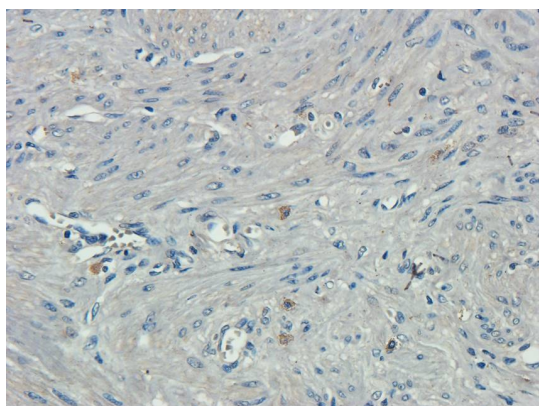
68 TW Alexander Drive
Research Triangle Park
Durham
NC 27713
United States

Email: info@biorbyt.com, support@biorbyt.com

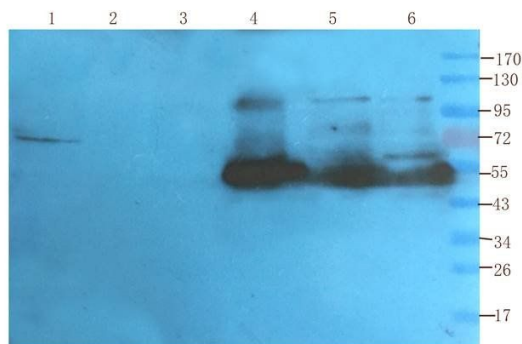
Phone: [+1 \(415\) 906-5211](tel:+1(415)906-5211) | Fax: [+1 \(415\) 651-8558](tel:+1(415)651-8558)



IHC-P image of rat testis tissue using anti-ATF6 (dilution of primary antibody at 2.5 ug/ml)



IHC-P staining of human endometrial carcinoma tissue using ATF6 antibody (dilution at 2.5 ug/ml)



Wb analysis of mouse testis (lane 1), mouse liver (lane 2), mouse brain (lane 3), human breast cancer (lane 4), Hela cells (lane 5), 293T cells (lane 6) using ATF6 antibody (1 ug/ml)

Biorbyt Ltd.

7 Signet Court, Swann Road
Cambridge
CB5 8LA
United Kingdom

Email: info@biorbyt.com, support@biorbyt.com

Phone: +44 (0)1223 859353 | Fax: +1 (415) 651-8558

Biorbyt LLC

68 TW Alexander Drive
Research Triangle Park
Durham
NC 27713
United States

Email: info@biorbyt.com, support@biorbyt.com

Phone: +1 (415) 906-5211 | Fax: +1 (415) 651-8558