

Product Datasheet

Krox-20 Rabbit Polyclonal Antibody (orb381897)

Catalog Number	orb381897
Category	Antibodies
Description	Krox-20 Rabbit Polyclonal Antibody is an unconjugated antibody that specifically recognizes Krox-20 (EGR2). Generated against a KLH conjugated synthetic peptide derived from human Krox-20 (EGR2). The peptide is available as orb13005. It is supplied in liquid form and exhibits reactivity with Human, Mouse and Rat samples. The suitable applications for this antibody are IHC-P and WB.
Target	Krox-20 (EGR2)
Clonality	Polyclonal
Species/Host	Rabbit
Isotype	IgG
Conjugation	Unconjugated
Reactivity	Human, Mouse, Rat
Form/Appearance	10 mM PBS, 0.02% sodium azide
Concentration	- 100 µg (in 200 µl): 0.5 mg/ml- 200 µg (in 400 µl): 0.5 mg/ml
Purity	Polyclonal antibodies are purified by peptide affinity chromatography
Immunogen	KLH conjugated synthetic peptide derived from human Krox-20 (EGR2). Please contact us for the exact immunogen sequence. The peptide is available as orb13005.
MW	50 kDa
Tested applications	IHC-P, WB

Biorbyt Ltd.

7 Signet Court, Swann Road
Cambridge
CB5 8LA
United Kingdom

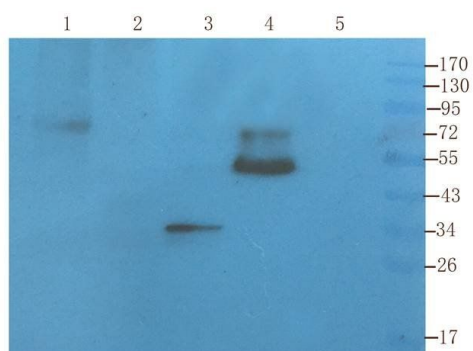
Email: info@biorbyt.com, support@biorbyt.com
Phone: [+44 \(0\)1223 859353](tel:+44(0)1223859353) | Fax: [+1 \(415\) 651-8558](tel:+1(415)651-8558)

Biorbyt LLC

68 TW Alexander Drive
Research Triangle Park
Durham
NC 27713-2847
United States

Email: info@biorbyt.com, support@biorbyt.com
Phone: [+1 \(415\) 906-5211](tel:+1(415)906-5211) | Fax: [+1 \(415\) 651-8558](tel:+1(415)651-8558)

Dilution range	IHC-P: 1:100-500, WB: 1:200-2000
Storage	Maintain refrigerated at 2-8°C for up to 2 weeks. For long term storage store at -20°C in small aliquots to prevent freeze-thaw cycles.
Note	For research use only
Expiration Date	12 months from date of receipt.



Western blot analysis of rat nerve (lane 1), mouse brain (lane 2), mouse spinal cord (lane 3), human breast cancer (lane 4), U251 cells (lane 5) using Krox-20 (EGR2) antibody



Immunohistochemical staining of paraffin embedded rat brain tissue using anti-Krox-20 (EGR2) (primary antibody at 2.5 ug/ml)

Biorbyt Ltd.

7 Signet Court, Swann Road
Cambridge
CB5 8LA
United Kingdom

Email: info@biorbyt.com, support@biorbyt.com

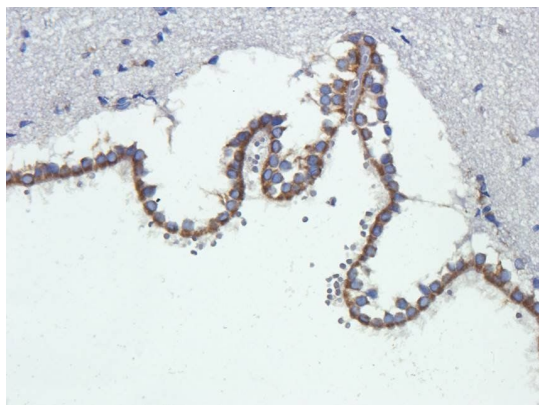
Phone: [+44 \(0\)1223 859353](tel:+44(0)1223859353) | Fax: [+1 \(415\) 651-8558](tel:+1(415)6518558)

Biorbyt LLC

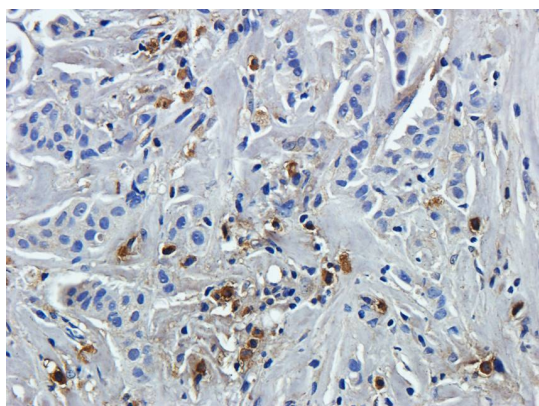
68 TW Alexander Drive
Research Triangle Park
Durham
NC 27713-2847
United States

Email: info@biorbyt.com, support@biorbyt.com

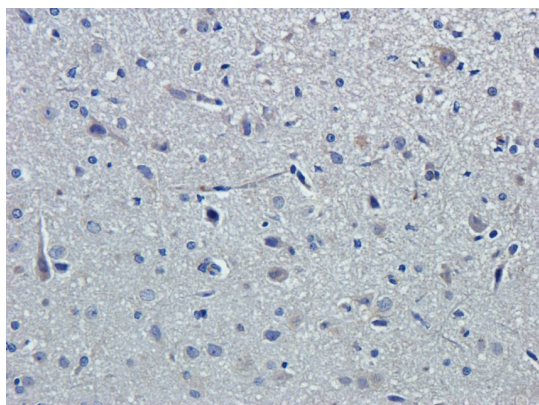
Phone: [+1 \(415\) 906-5211](tel:+1(415)9065211) | Fax: [+1 \(415\) 651-8558](tel:+1(415)6518558)



Immunohistochemical staining of paraffin embedded rat brain tissue using anti-Krox-20 (EGR2) (primary antibody at 2.5 ug/ml)



IHC-P staining of human breast tumour tissue using Krox-20 (EGR2) antibody (dilution at 2.5 ug/ml)



IHC-P staining of rat brain tissue using Krox-20 (EGR2) antibody (dilution at 2.5 ug/ml)

Biorbyt Ltd.

7 Signet Court, Swann Road
Cambridge
CB5 8LA
United Kingdom

Email: info@biorbyt.com, support@biorbyt.com

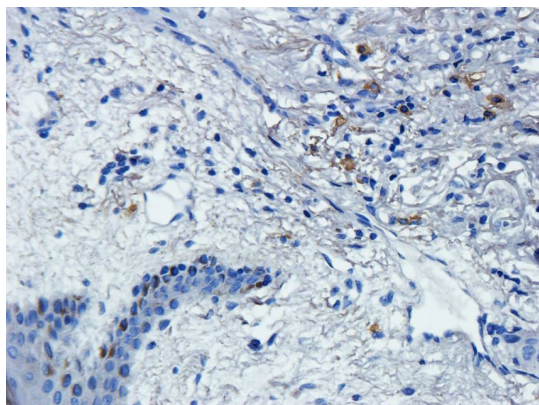
Phone: [+44 \(0\)1223 859353](tel:+44(0)1223859353) | Fax: [+1 \(415\) 651-8558](tel:+1(415)651-8558)

Biorbyt LLC

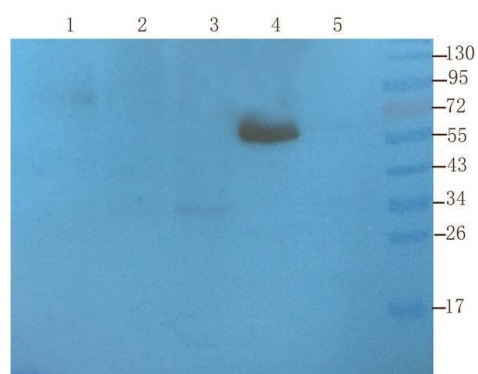
68 TW Alexander Drive
Research Triangle Park
Durham
NC 27713-2847
United States

Email: info@biorbyt.com, support@biorbyt.com

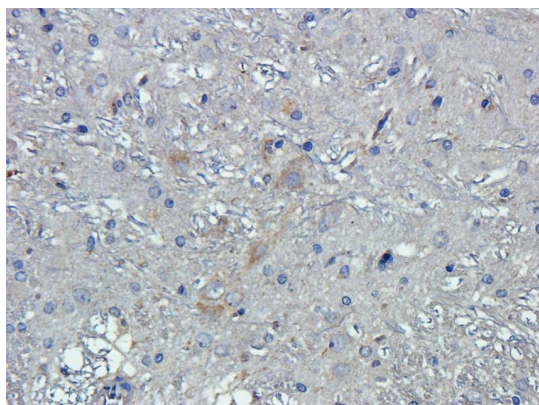
Phone: [+1 \(415\) 906-5211](tel:+1(415)906-5211) | Fax: [+1 \(415\) 651-8558](tel:+1(415)651-8558)



IHC-P staining of human breast tumour tissue using anti-Krox-20 (EGR2) (dilution at 2.5 ug/ml)



WB analysis of rat nerve (lane 1), mouse brain (lane 2), mouse spinal cord (lane 3), human breast cancer (lane 4), U251 cells (lane 5) using Krox-20 (EGR2) antibody



Immunohistochemical staining of paraffin embedded rat brain tissue using anti-Krox-20 (EGR2) (primary antibody at 2.5 ug/ml)

Biorbyt Ltd.

7 Signet Court, Swann Road
Cambridge
CB5 8LA
United Kingdom

Email: info@biorbyt.com, support@biorbyt.com

Phone: +44 (0)1223 859353 | Fax: +1 (415) 651-8558

Biorbyt LLC

68 TW Alexander Drive
Research Triangle Park
Durham
NC 27713-2847
United States

Email: info@biorbyt.com, support@biorbyt.com

Phone: +1 (415) 906-5211 | Fax: +1 (415) 651-8558