

Product Datasheet

Human Fibulin-3/EFEMP1 ELISA Kit (orb381137)

Catalog Number	orb381137
Category	Assays and Kits
Description	Human Fibulin-3/EFEMP1 ELISA Kit
Target	EGF-containing fibulin-like extracellular matrix protein 1
Reactivity	Human
Immunogen	Expression system for standard: CHO; Immunogen sequence: Q18-F493
UniProt ID	Q12805
MW	54641 Da
Tested applications	ELISA
Specificity	Natural and recombinant human Fibulin-3
Cross Reactivity	There is no detectable cross-reactivity with other relevant proteins.
Range	312 pg/ml - 20,000 pg/ml
Sensitivity	10 pg/ml
Sample Types	cell culture supernatants, cell lysates, serum and plasma (heparin, EDTA).
Storage	Store at 4°C for 6 months, at -20°C for 12 months. Avoid multiple freeze-thaw cycles (Ships with gel ice, can store for up to 3 days in room temperature. Freeze upon receiving.)
Note	For research use only
Expiration Date	6 months from date of receipt.

Biorbyt Ltd.

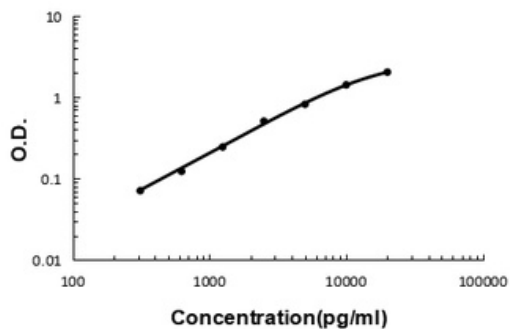
7 Signet Court, Swann Road
Cambridge
CB5 8LA
United Kingdom

Email: info@biorbyt.com, support@biorbyt.com
Phone: [+44 \(0\)1223 859353](tel:+44(0)1223859353) | Fax: [+1 \(415\) 651-8558](tel:+1(415)651-8558)

Biorbyt LLC

68 TW Alexander Drive
Research Triangle Park
Durham
NC 27713
United States

Email: info@biorbyt.com, support@biorbyt.com
Phone: [+1 \(415\) 906-5211](tel:+1(415)906-5211) | Fax: [+1 \(415\) 651-8558](tel:+1(415)651-8558)

Human Fibulin-3 ELISA Kit

Human Fibulin-3/EFEMP1 PicoKine ELISA Kit standard curve

Biorbyt Ltd.

7 Signet Court, Swann Road
Cambridge
CB5 8LA
United Kingdom

Email: info@biorbyt.com, support@biorbyt.com

Phone: [+44 \(0\)1223 859353](tel:+44(0)1223859353) | Fax: [+1 \(415\) 651-8558](tel:+1(415)651-8558)

Biorbyt LLC

68 TW Alexander Drive
Research Triangle Park
Durham
NC 27713
United States

Email: info@biorbyt.com, support@biorbyt.com

Phone: [+1 \(415\) 906-5211](tel:+1(415)906-5211) | Fax: [+1 \(415\) 651-8558](tel:+1(415)651-8558)