

## Product Datasheet

### CD28 Rabbit Polyclonal Antibody (orb378206)

<b>Catalog Number</b>	orb378206
<b>Category</b>	Antibodies
<b>Description</b>	CD28 Rabbit Polyclonal Antibody is an unconjugated antibody that specifically recognizes CD28. Generated against a KLH conjugated synthetic peptide derived from human CD28. The peptide is available as orb12968. It is supplied in liquid form and exhibits reactivity with Human, Mouse and Rat samples. The suitable applications for this antibody are ICC, IF, IHC-P and WB.
<b>Target</b>	CD28
<b>Clonality</b>	Polyclonal
<b>Species/Host</b>	Rabbit
<b>Isotype</b>	IgG
<b>Conjugation</b>	Unconjugated
<b>Reactivity</b>	Human, Mouse, Rat
<b>Form/Appearance</b>	10 mM PBS, 0.02% sodium azide
<b>Concentration</b>	- 100 µg (in 200 µl): 0.5 mg/ml- 200 µg (in 400 µl): 0.5 mg/ml
<b>Purity</b>	Polyclonal antibodies are purified by peptide affinity chromatography
<b>Immunogen</b>	KLH conjugated synthetic peptide derived from human CD28. Please contact us for the exact immunogen sequence. The peptide is available as orb12968.
<b>MW</b>	25 kDa
<b>Tested applications</b>	ICC, IF, IHC-P, WB

**Biorbyt Ltd.**

7 Signet Court, Swann Road  
Cambridge  
CB5 8LA  
United Kingdom

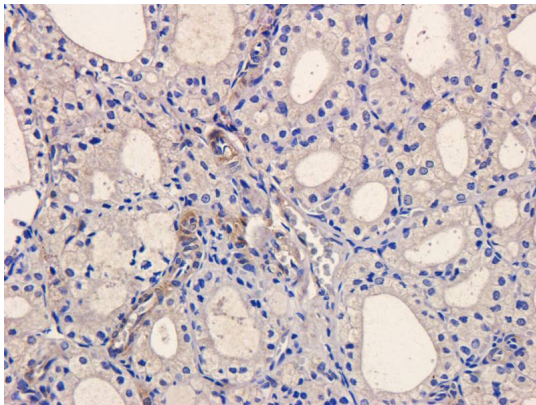
Email: [info@biorbyt.com](mailto:info@biorbyt.com), [support@biorbyt.com](mailto:support@biorbyt.com)  
Phone: [+44 \(0\)1223 859353](tel:+44(0)1223859353) | Fax: [+1 \(415\) 651-8558](tel:+1(415)651-8558)

**Biorbyt LLC**

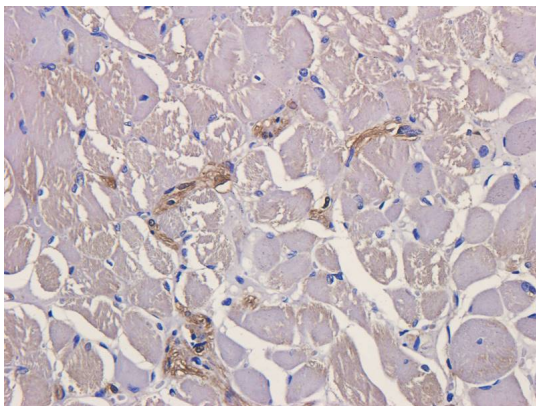
68 TW Alexander Drive  
Research Triangle Park  
Durham  
NC 27713-2847  
United States

Email: [info@biorbyt.com](mailto:info@biorbyt.com), [support@biorbyt.com](mailto:support@biorbyt.com)  
Phone: [+1 \(415\) 906-5211](tel:+1(415)906-5211) | Fax: [+1 \(415\) 651-8558](tel:+1(415)651-8558)

<b>Dilution range</b>	IF/ICC: 1:100-600, IHC-P: 1:100-600, WB: 1:200-1500
<b>Storage</b>	Maintain refrigerated at 2-8°C for up to 2 weeks. For long term storage store at -20°C in small aliquots to prevent freeze-thaw cycles.
<b>Note</b>	For research use only
<b>Expiration Date</b>	12 months from date of receipt.



IHC-P staining of rat thyroid tissue using CD28 antibody (dilution at 2.5 ug/ml)



Immunohistochemical staining of paraffin embedded rat muscle tissue using CD28 antibody (primary antibody at 2.5 ug/ml)

**Biorbyt Ltd.**

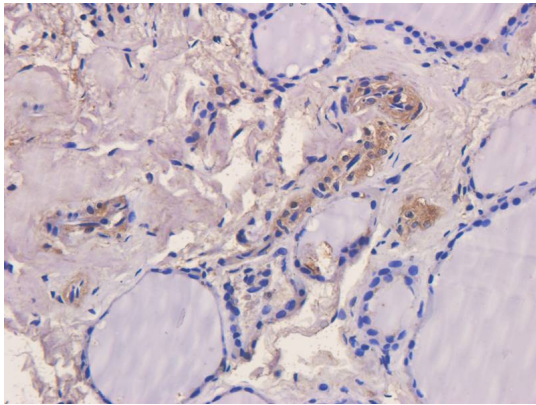
7 Signet Court, Swann Road  
Cambridge  
CB5 8LA  
United Kingdom

Email: [info@biorbyt.com](mailto:info@biorbyt.com), [support@biorbyt.com](mailto:support@biorbyt.com)  
Phone: [+44 \(0\)1223 859353](tel:+44(0)1223859353) | Fax: [+1 \(415\) 651-8558](tel:+1(415)651-8558)

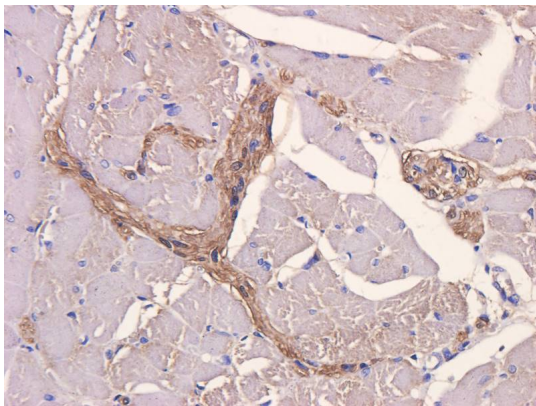
**Biorbyt LLC**

68 TW Alexander Drive  
Research Triangle Park  
Durham  
NC 27713-2847  
United States

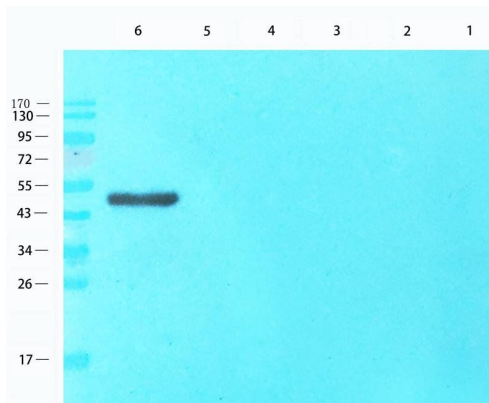
Email: [info@biorbyt.com](mailto:info@biorbyt.com), [support@biorbyt.com](mailto:support@biorbyt.com)  
Phone: [+1 \(415\) 906-5211](tel:+1(415)906-5211) | Fax: [+1 \(415\) 651-8558](tel:+1(415)651-8558)



Immunohistochemical staining of paraffin embedded human thyroid tumour tissue using CD28 antibody (primary antibody at 2.5 ug/ml)



Immunohistochemical staining of paraffin embedded rat muscle tissue using CD28 antibody (primary antibody at 2.5 ug/ml)



Western blot analysis of rat lymph node (lane 1), rat spleen (lane 2), mouse thymus (lane 3), rat thyroid (lane 4), rat small intestines (lane 5), human thyroid cancer (lane 6) using CD28 antibody (1 ug/ml)

**Biorbyt Ltd.**

7 Signet Court, Swann Road  
Cambridge  
CB5 8LA  
United Kingdom

Email: [info@biorbyt.com](mailto:info@biorbyt.com), [support@biorbyt.com](mailto:support@biorbyt.com)

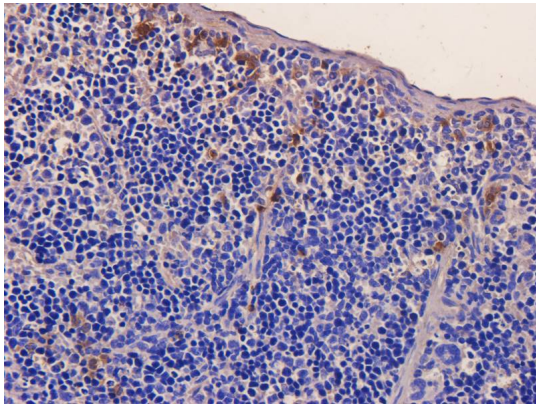
Phone: +44 (0)1223 859353 | Fax: +1 (415) 651-8558

**Biorbyt LLC**

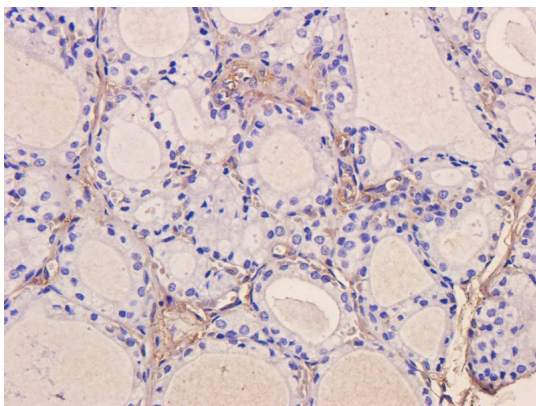
68 TW Alexander Drive  
Research Triangle Park  
Durham  
NC 27713-2847  
United States

Email: [info@biorbyt.com](mailto:info@biorbyt.com), [support@biorbyt.com](mailto:support@biorbyt.com)

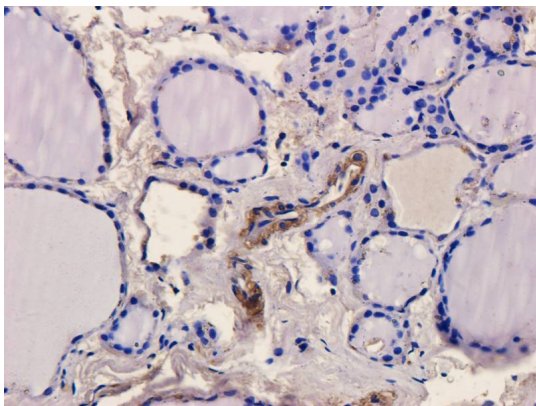
Phone: +1 (415) 906-5211 | Fax: +1 (415) 651-8558



IHC-P staining of mouse spleen tissue using CD28 antibody (dilution at 2.5 ug/ml)



IHC-P image of rat thyroid tissue using anti-CD28 (dilution of primary antibody at 2.5 ug/ml)



IHC-P staining of human thyroid tumour tissue using CD28 antibody (dilution at 2.5 ug/ml)

**Biorbyt Ltd.**

7 Signet Court, Swann Road  
Cambridge  
CB5 8LA  
United Kingdom

Email: [info@biorbyt.com](mailto:info@biorbyt.com), [support@biorbyt.com](mailto:support@biorbyt.com)

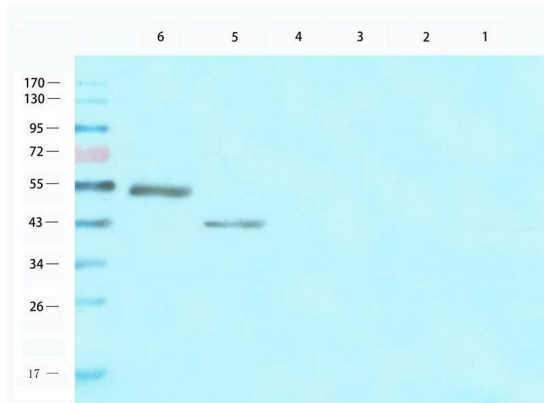
Phone: [+44 \(0\)1223 859353](tel:+44(0)1223859353) | Fax: [+1 \(415\) 651-8558](tel:+1(415)651-8558)

**Biorbyt LLC**

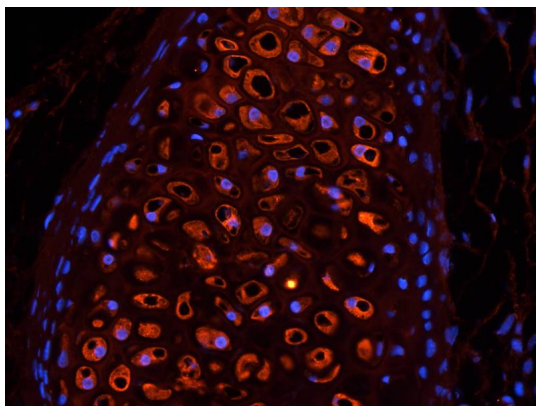
68 TW Alexander Drive  
Research Triangle Park  
Durham  
NC 27713-2847  
United States

Email: [info@biorbyt.com](mailto:info@biorbyt.com), [support@biorbyt.com](mailto:support@biorbyt.com)

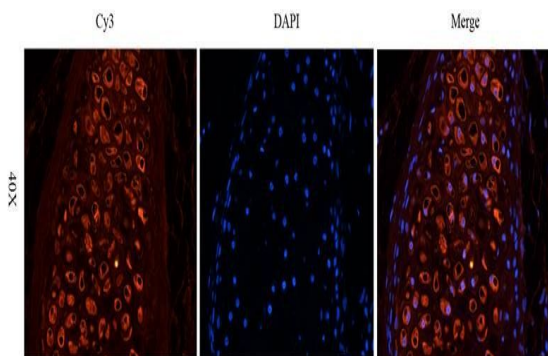
Phone: [+1 \(415\) 906-5211](tel:+1(415)906-5211) | Fax: [+1 \(415\) 651-8558](tel:+1(415)651-8558)



WB analysis of rat lymph node (lane 1), rat spleen (lane 2), mouse thymus (lane 3), rat thyroid (lane 4), rat small intestines (lane 5), human thyroid cancer (lane 6) using CD28 antibody (1 ug/ml)



Immunofluorescence image of rat cartilage tissue using CD28 antibody (dilution at 2.5 ug/ml)



IF analysis of rat cartilage tissue using anti-CD28 (dilution of primary antibody at 2.5 ug/ml)

**Biorbyt Ltd.**

7 Signet Court, Swann Road  
Cambridge  
CB5 8LA  
United Kingdom

Email: [info@biorbyt.com](mailto:info@biorbyt.com), [support@biorbyt.com](mailto:support@biorbyt.com)

Phone: +44 (0)1223 859353 | Fax: +1 (415) 651-8558

**Biorbyt LLC**

68 TW Alexander Drive  
Research Triangle Park  
Durham  
NC 27713-2847  
United States

Email: [info@biorbyt.com](mailto:info@biorbyt.com), [support@biorbyt.com](mailto:support@biorbyt.com)

Phone: +1 (415) 906-5211 | Fax: +1 (415) 651-8558