

Product Datasheet

Beclin 1 Antibody (FITC) (orb377136)

Catalog Number	orb377136
Category	Antibodies
Description	Rabbit polyclonal antibody against Beclin 1 conjugated to FITC
Target	Beclin 1
Clonality	Polyclonal
Species/Host	Rabbit
Conjugation	FITC
Reactivity	Human, Rat
Concentration	1 mg/ml
Buffer/Preservatives	640.91mM DMSO, 136.36 mM Ethanolamine, 126.89 mM chlorides, 9.09mM phosphates, 9.09mM NaHCO ₃
Purification	Peptide Affinity Purified
Immunogen	Synthetic peptide from the C-terminus of human Beclin 1
UniProt ID	Q14457
MW	51kDa
Tested applications	ICC, IF, WB
Dilution range	WB (1:1000); ICC/IF (1:100)
Application notes	A 1:1000 dilution was sufficient for detection of Beclin1 on 293T lysates using Goat anti-rabbit IgG:HRP as the secondary antibody.

Biorbyt Ltd.

7 Signet Court, Swann Road
Cambridge
CB5 8LA
United Kingdom

Email: info@biorbyt.com, support@biorbyt.com

Phone: [+44 \(0\)1223 859353](tel:+44(0)1223859353) | Fax: [+1 \(415\) 651-8558](tel:+1(415)651-8558)

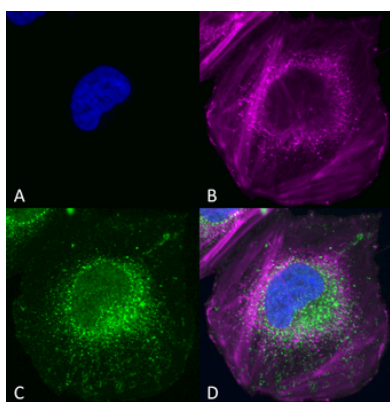
Biorbyt LLC

68 TW Alexander Drive
Research Triangle Park
Durham
NC 27713
United States

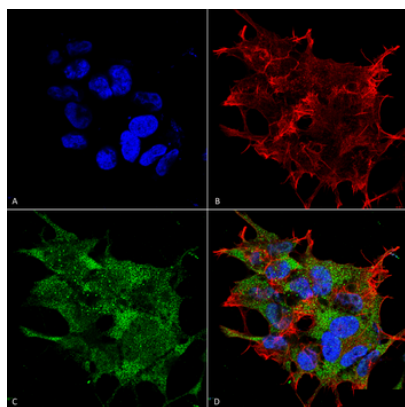
Email: info@biorbyt.com, support@biorbyt.com

Phone: [+1 \(415\) 906-5211](tel:+1(415)906-5211) | Fax: [+1 \(415\) 651-8558](tel:+1(415)651-8558)

Specificity	Predicted molecular weight at ~51kDa.
Storage	Conjugated antibodies should be stored according to the product label
Note	For research use only
Entrez	8678
NCBI	NP_001300927.1
Expiration Date	12 months from date of receipt.



Immunocytochemistry/Immunofluorescence analysis using Rabbit Anti-Beclin 1 Polyclonal Antibody. Tissue: SK-N-BE. Species: Human. Primary Antibody: Rabbit Anti-Beclin 1 Polyclonal Antibody at 1:200 for Overnight. Secondary Antibody: Anti-Rabbit: AlexaFluor 555 at 1:1000. Counterstain: Hoechst, Phalloidin AlexaFluor 647 at 1:1000. Localization: Mitochondria, endosomes/exosomes. A) Hoechst Nuclear Stain B) Phalloidin AlexaFluor 647 C) Anti-Beclin 1 D) Merge.



Immunocytochemistry/Immunofluorescence analysis using Rabbit Anti-Beclin 1 Polyclonal Antibody. Tissue: Neuroblastoma cell line (SK-N-BE). Species: Human. Fixation: 4% Formaldehyde for 15 min at RT. Primary Antibody: Rabbit Anti-Beclin 1 Polyclonal Antibody at 1:100 for 60 min at RT. Secondary Antibody: Goat Anti-Rabbit ATTO 488 at 1:100 for 60 min at RT. Counterstain: Phalloidin Texas Red F-Actin stain; DAPI (blue) nuclear stain at 1:1000, 1:5000 for 60min RT, 5min RT. Localization: Golgi apparatus, Dendrites and Cell bodies of cerebellar Purkinje cells. Magnification: 60X. (A) DAPI (blue) nuclear stain (B) Phalloidin Texas Red F-Actin stain (C) Beclin 1 Antibody (D) Composite.

Biorbyt Ltd.

7 Signet Court, Swann Road
Cambridge
CB5 8LA
United Kingdom

Email: info@biorbyt.com, support@biorbyt.com

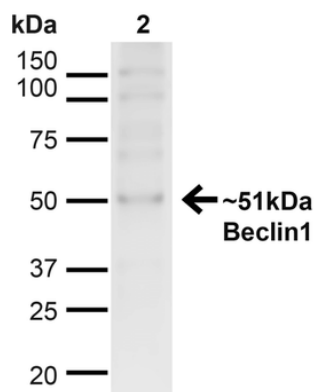
Phone: +44 (0)1223 859353 | Fax: +1 (415) 651-8558

Biorbyt LLC

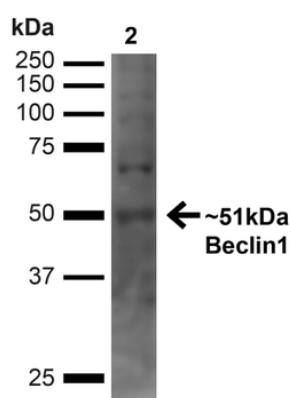
68 TW Alexander Drive
Research Triangle Park
Durham
NC 27713
United States

Email: info@biorbyt.com, support@biorbyt.com

Phone: +1 (415) 906-5211 | Fax: +1 (415) 651-8558



Western blot analysis of Human Cervical cancer cell line (HeLa) lysate showing detection of ~51kDa Beclin 1 protein using Rabbit Anti-Beclin 1 Polyclonal Antibody. Lane 1: MW Ladder. Lane 2: Human HeLa (20 µg). Load: 20 µg. Block: 5% milk + TBST for 1 hour at RT. Primary Antibody: Rabbit Anti-Beclin 1 Polyclonal Antibody at 1:1000 for 1 hour at RT. Secondary Antibody: Goat Anti-Rabbit: HRP at 1:2000 for 1 hour at RT. Color Development: TMB solution for 12 min at RT. Predicted/Observed Size: ~51kDa.



Western blot analysis of Human Embryonic kidney epithelial cell line (HEK293T) lysate showing detection of ~51kDa Beclin 1 protein using Rabbit Anti-Beclin 1 Polyclonal Antibody. Lane 1: MW Ladder. Lane 2: Human 293T (20 µg). Load: 20 µg. Block: 5% milk + TBST for 1 hour at RT. Primary Antibody: Rabbit Anti-Beclin 1 Polyclonal Antibody at 1:1000 for 1 hour at RT. Secondary Antibody: Goat Anti-Rabbit: HRP at 1:2000 for 1 hour at RT. Color Development: TMB solution for 12 min at RT. Predicted/Observed Size: ~51kDa.

Biorbyt Ltd.

7 Signet Court, Swann Road
Cambridge
CB5 8LA
United Kingdom

Email: info@biorbyt.com, support@biorbyt.com

Phone: +44 (0)1223 859353 | Fax: +1 (415) 651-8558

Biorbyt LLC

68 TW Alexander Drive
Research Triangle Park
Durham
NC 27713
United States

Email: info@biorbyt.com, support@biorbyt.com

Phone: +1 (415) 906-5211 | Fax: +1 (415) 651-8558