

## Product Datasheet

### Beclin 1 Antibody (Biotin) (orb377135)

<b>Catalog Number</b>	orb377135
<b>Category</b>	Antibodies
<b>Description</b>	Rabbit polyclonal antibody against Beclin 1 conjugated to Biotin
<b>Target</b>	Beclin 1
<b>Clonality</b>	Polyclonal
<b>Species/Host</b>	Rabbit
<b>Conjugation</b>	Biotin
<b>Reactivity</b>	Human, Rat
<b>Concentration</b>	1 mg/ml
<b>Buffer/Preservatives</b>	136.36mM Ethanolamine, 133.23 mM Chlorides, 9.55mM Phosphates, 9.55mM Sodium Bicarbonate.
<b>Purification</b>	Peptide Affinity Purified
<b>Immunogen</b>	Synthetic peptide from the C-terminus of human Beclin 1
<b>UniProt ID</b>	<b>Q14457</b>
<b>MW</b>	51kDa
<b>Tested applications</b>	ICC, IF, WB
<b>Dilution range</b>	WB (1:1000); ICC/IF (1:100)
<b>Application notes</b>	A 1:1000 dilution was sufficient for detection of Beclin1 on 293T lysates using Goat anti-rabbit IgG:HRP as the secondary antibody.

**Biorbyt Ltd.**

7 Signet Court, Swann Road  
Cambridge  
CB5 8LA  
United Kingdom

Email: [info@biorbyt.com](mailto:info@biorbyt.com), [support@biorbyt.com](mailto:support@biorbyt.com)

Phone: [+44 \(0\)1223 859353](tel:+44(0)1223859353) | Fax: [+1 \(415\) 651-8558](tel:+1(415)651-8558)

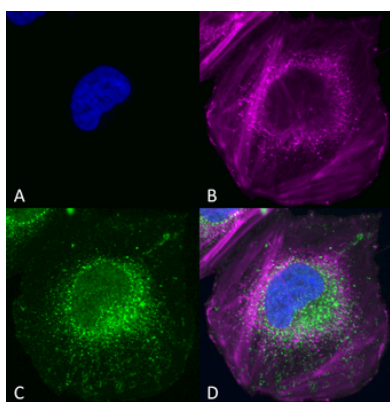
**Biorbyt LLC**

68 TW Alexander Drive  
Research Triangle Park  
Durham  
NC 27713  
United States

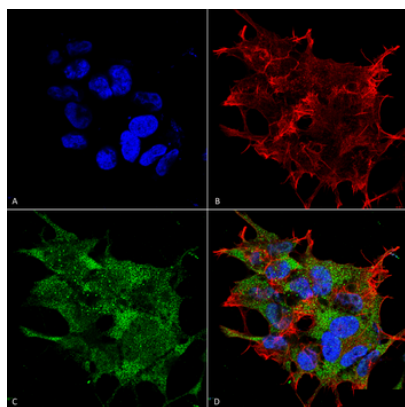
Email: [info@biorbyt.com](mailto:info@biorbyt.com), [support@biorbyt.com](mailto:support@biorbyt.com)

Phone: [+1 \(415\) 906-5211](tel:+1(415)906-5211) | Fax: [+1 \(415\) 651-8558](tel:+1(415)651-8558)

<b>Specificity</b>	Predicted molecular weight at ~51kDa.
<b>Storage</b>	Conjugated antibodies should be stored according to the product label
<b>Note</b>	For research use only
<b>Entrez</b>	<b>8678</b>
<b>NCBI</b>	<b>NP_001300927.1</b>
<b>Expiration Date</b>	12 months from date of receipt.



Immunocytochemistry/Immunofluorescence analysis using Rabbit Anti-Beclin 1 Polyclonal Antibody. Tissue: SK-N-BE. Species: Human. Primary Antibody: Rabbit Anti-Beclin 1 Polyclonal Antibody at 1:200 for Overnight. Secondary Antibody: Anti-Rabbit: AlexaFluor 555 at 1:1000. Counterstain: Hoechst, Phalloidin AlexaFluor 647 at 1:1000. Localization: Mitochondria, endosomes/exosomes. A) Hoechst Nuclear Stain B) Phalloidin AlexaFluor 647 C) Anti-Beclin 1 D) Merge.



Immunocytochemistry/Immunofluorescence analysis using Rabbit Anti-Beclin 1 Polyclonal Antibody. Tissue: Neuroblastoma cell line (SK-N-BE). Species: Human. Fixation: 4% Formaldehyde for 15 min at RT. Primary Antibody: Rabbit Anti-Beclin 1 Polyclonal Antibody at 1:100 for 60 min at RT. Secondary Antibody: Goat Anti-Rabbit ATTO 488 at 1:100 for 60 min at RT. Counterstain: Phalloidin Texas Red F-Actin stain; DAPI (blue) nuclear stain at 1:1000, 1:5000 for 60min RT, 5min RT. Localization: Golgi apparatus, Dendrites and Cell bodies of cerebellar Purkinje cells. Magnification: 60X. (A) DAPI (blue) nuclear stain (B) Phalloidin Texas Red F-Actin stain (C) Beclin 1 Antibody (D) Composite.

**Biorbyt Ltd.**

7 Signet Court, Swann Road  
Cambridge  
CB5 8LA  
United Kingdom

Email: [info@biorbyt.com](mailto:info@biorbyt.com), [support@biorbyt.com](mailto:support@biorbyt.com)

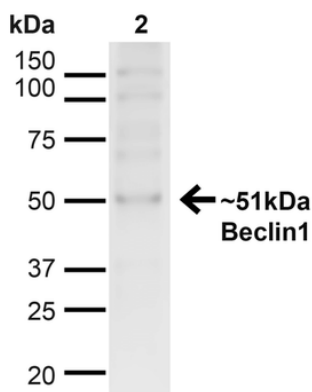
Phone: +44 (0)1223 859353 | Fax: +1 (415) 651-8558

**Biorbyt LLC**

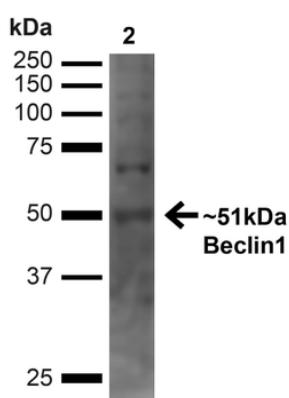
68 TW Alexander Drive  
Research Triangle Park  
Durham  
NC 27713  
United States

Email: [info@biorbyt.com](mailto:info@biorbyt.com), [support@biorbyt.com](mailto:support@biorbyt.com)

Phone: +1 (415) 906-5211 | Fax: +1 (415) 651-8558



Western blot analysis of Human Cervical cancer cell line (HeLa) lysate showing detection of ~51kDa Beclin 1 protein using Rabbit Anti-Beclin 1 Polyclonal Antibody. Lane 1: MW Ladder. Lane 2: Human HeLa (20 µg). Load: 20 µg. Block: 5% milk + TBST for 1 hour at RT. Primary Antibody: Rabbit Anti-Beclin 1 Polyclonal Antibody at 1:1000 for 1 hour at RT. Secondary Antibody: Goat Anti-Rabbit: HRP at 1:2000 for 1 hour at RT. Color Development: TMB solution for 12 min at RT. Predicted/Observed Size: ~51kDa.



Western blot analysis of Human Embryonic kidney epithelial cell line (HEK293T) lysate showing detection of ~51kDa Beclin 1 protein using Rabbit Anti-Beclin 1 Polyclonal Antibody. Lane 1: MW Ladder. Lane 2: Human 293T (20 µg). Load: 20 µg. Block: 5% milk + TBST for 1 hour at RT. Primary Antibody: Rabbit Anti-Beclin 1 Polyclonal Antibody at 1:1000 for 1 hour at RT. Secondary Antibody: Goat Anti-Rabbit: HRP at 1:2000 for 1 hour at RT. Color Development: TMB solution for 12 min at RT. Predicted/Observed Size: ~51kDa.

**Biorbyt Ltd.**

7 Signet Court, Swann Road  
Cambridge  
CB5 8LA  
United Kingdom

Email: [info@biorbyt.com](mailto:info@biorbyt.com), [support@biorbyt.com](mailto:support@biorbyt.com)  
Phone: +44 (0)1223 859353 | Fax: +1 (415) 651-8558

**Biorbyt LLC**

68 TW Alexander Drive  
Research Triangle Park  
Durham  
NC 27713  
United States

Email: [info@biorbyt.com](mailto:info@biorbyt.com), [support@biorbyt.com](mailto:support@biorbyt.com)  
Phone: +1 (415) 906-5211 | Fax: +1 (415) 651-8558