

Product Datasheet

beta Endorphin Rabbit Polyclonal Antibody (orb372332)

Catalog Number	orb372332
Category	Antibodies
Description	beta Endorphin Rabbit Polyclonal Antibody is an unconjugated antibody that specifically recognizes beta Endorphin. Generated against a KLH conjugated synthetic peptide derived from human beta Endorphin. The peptide is available as orb374987. It is supplied in liquid form and exhibits reactivity with Human, Mouse and Rat samples. The suitable applications for this antibody are ICC, IF, IHC-P and WB.
Target	beta Endorphin
Clonality	Polyclonal
Species/Host	Rabbit
Isotype	IgG
Conjugation	Unconjugated
Reactivity	Human, Mouse, Rat
Form/Appearance	10 mM PBS, 0.02% sodium azide
Concentration	- 100 µg (in 200 µl): 0.5 mg/ml- 200 µg (in 400 µl): 0.5 mg/ml
Purity	Polyclonal antibodies are purified by peptide affinity chromatography
Immunogen	KLH conjugated synthetic peptide derived from human beta Endorphin. Please contact us for the exact immunogen sequence. The peptide is available as orb374987.

Biorbyt Ltd.

7 Signet Court, Swann Road
Cambridge
CB5 8LA
United Kingdom

Email: info@biorbyt.com, support@biorbyt.com

Phone: [+44 \(0\)1223 859353](tel:+44(0)1223859353) | Fax: [+1 \(415\) 651-8558](tel:+1(415)651-8558)

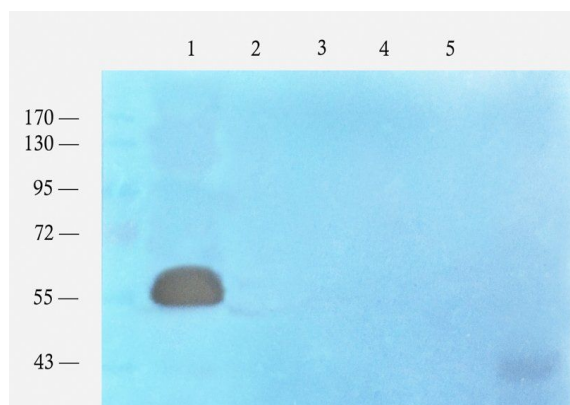
Biorbyt LLC

68 TW Alexander Drive
Research Triangle Park
Durham
NC 27713-2847
United States

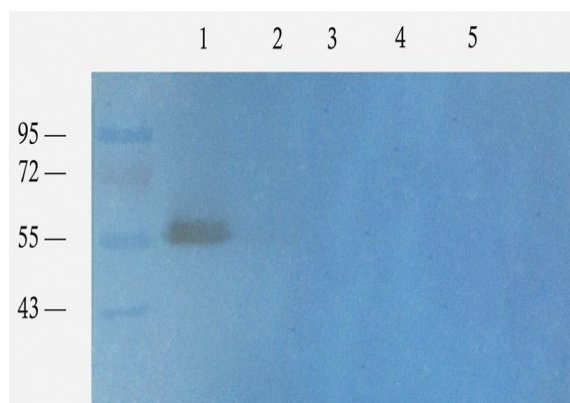
Email: info@biorbyt.com, support@biorbyt.com

Phone: [+1 \(415\) 906-5211](tel:+1(415)906-5211) | Fax: [+1 \(415\) 651-8558](tel:+1(415)651-8558)

UniProt ID	P01189, P01194
MW	29 kDa
Tested applications	ICC, IF, IHC-P, WB
Dilution range	WB: 1:200-1000, IHC-P: 1:100-600, IF/ICC: 1:100-600
Storage	Maintain refrigerated at 2-8°C for up to 2 weeks. For long term storage store at -20°C in small aliquots to prevent freeze-thaw cycles.
Note	For research use only
Entrez	5443
Expiration Date	12 months from date of receipt.



WB analysis of mouse brain (lane 1), mouse lymph node (lane 2), mouse skin (lane 3), rat thymus (lane 4), human thyroid tumour (lane 5) using beta Endorphin antibody (1 ug/ml)



Western blot analysis of mouse brain (lane 1), mouse lymph node (lane 2), mouse skin (lane 3), rat thymus (lane 4), human thyroid tumour (lane 5) using beta Endorphin antibody (1 ug/ml)

Biorbyt Ltd.

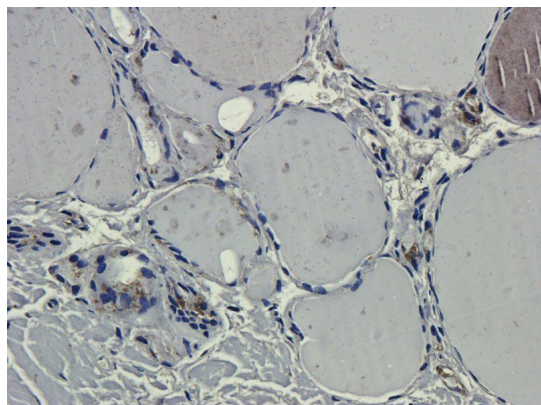
7 Signet Court, Swann Road
Cambridge
CB5 8LA
United Kingdom

Email: info@biorbyt.com, support@biorbyt.com
Phone: [+44 \(0\)1223 859353](tel:+44(0)1223859353) | Fax: [+1 \(415\) 651-8558](tel:+1(415)651-8558)

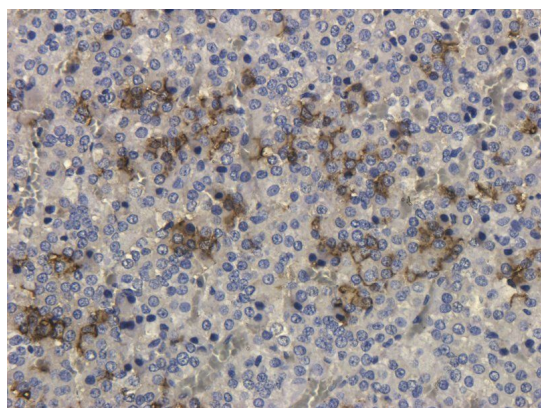
Biorbyt LLC

68 TW Alexander Drive
Research Triangle Park
Durham
NC 27713-2847
United States

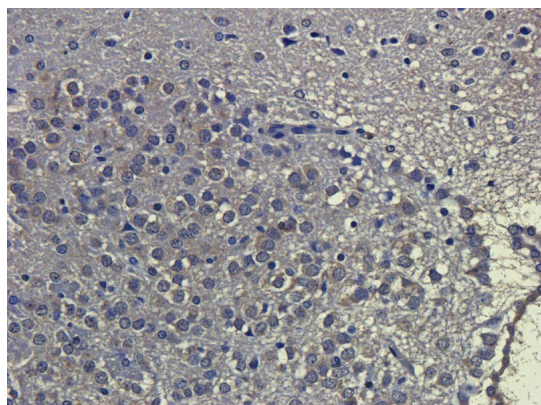
Email: info@biorbyt.com, support@biorbyt.com
Phone: [+1 \(415\) 906-5211](tel:+1(415)906-5211) | Fax: [+1 \(415\) 651-8558](tel:+1(415)651-8558)



IHC-P image of human thyroid tumour tissue using beta Endorphin antibody (dilution of primary antibody at 2.5 ug/ml)



Immunohistochemical staining of rat pituitary tissue using anti-beta Endorphin (dilution of primary antibody - 2.5 ug/ml)



Immunohistochemical staining of rat brain tissue using anti-beta Endorphin (dilution of primary antibody - 2.5 ug/ml)

Biorbyt Ltd.

7 Signet Court, Swann Road
Cambridge
CB5 8LA
United Kingdom

Email: info@biorbyt.com, support@biorbyt.com

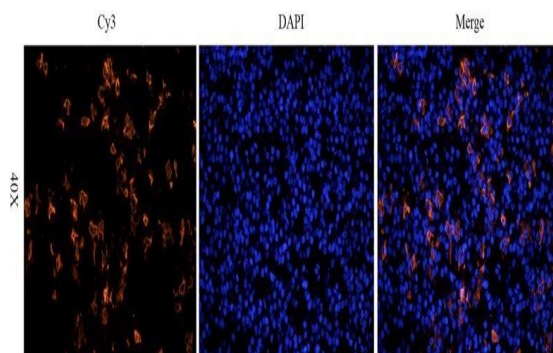
Phone: +44 (0)1223 859353 | Fax: +1 (415) 651-8558

Biorbyt LLC

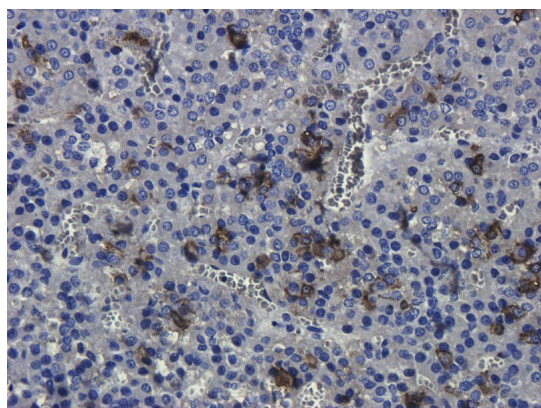
68 TW Alexander Drive
Research Triangle Park
Durham
NC 27713-2847
United States

Email: info@biorbyt.com, support@biorbyt.com

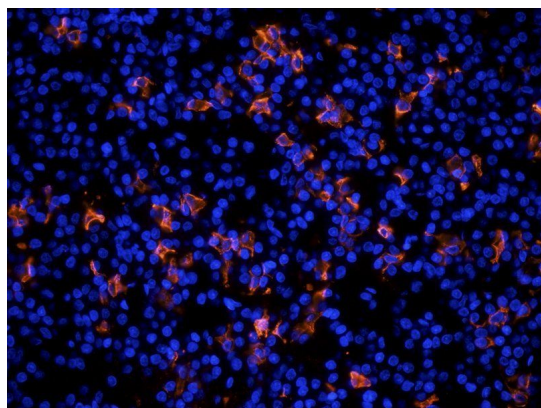
Phone: +1 (415) 906-5211 | Fax: +1 (415) 651-8558



Immunofluorescence analysis of rat pituitary tissue using beta Endorphin antibody (dilution of primary antibody - 2.5 ug/ml)



IHC-P staining of rat pituitary tissue using anti-beta Endorphin (dilution at 2.5 ug/ml)



Immunofluorescence image of rat pituitary tissue using anti-beta Endorphin (dilution at 2.5 ug/ml)

Biorbyt Ltd.

7 Signet Court, Swann Road
Cambridge
CB5 8LA
United Kingdom

Email: info@biorbyt.com, support@biorbyt.com

Phone: +44 (0)1223 859353 | Fax: +1 (415) 651-8558

Biorbyt LLC

68 TW Alexander Drive
Research Triangle Park
Durham
NC 27713-2847
United States

Email: info@biorbyt.com, support@biorbyt.com

Phone: +1 (415) 906-5211 | Fax: +1 (415) 651-8558