

Product Datasheet

MCP1 Rabbit Polyclonal Antibody (orb36895)

Catalog Number	orb36895
Category	Antibodies
Description	MCP1 Rabbit Polyclonal Antibody
Target	MCP1
Clonality	Polyclonal
Species/Host	Rabbit
Isotype	IgG
Conjugation	Unconjugated
Form/Appearance	10 mM PBS, 0.02% sodium azide
Concentration	- 100 µg (in 200 µl): 0.5 mg/ml- 200 µg (in 400 µl): 0.5 mg/ml
Purity	Polyclonal antibodies are purified by peptide affinity chromatography
Immunogen	KLH conjugated synthetic peptide derived from human MCP1. Please contact us for the exact immunogen sequence. The peptide is available as orb374822.
UniProt ID	P13500
RRID	AB_10919460
MW	11 kDa
Tested applications	ICC, IF, IHC-P, WB
Dilution range	IF/ICC: 1:50-500, IHC-P: 1:50-300, WB: 1:200-1000

Biorbyt Ltd.

7 Signet Court, Swann Road
Cambridge
CB5 8LA
United Kingdom

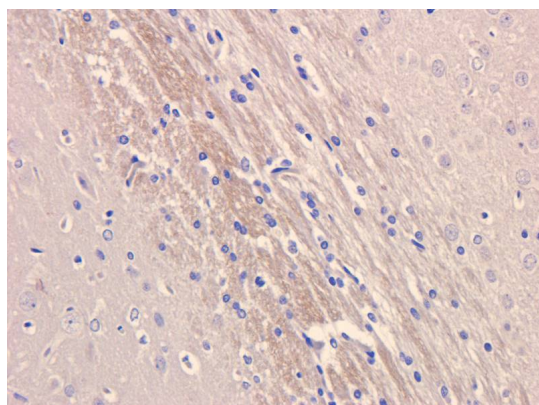
Email: info@biorbyt.com, support@biorbyt.com
Phone: [+44 \(0\)1223 859353](tel:+44(0)1223859353) | Fax: [+1 \(415\) 651-8558](tel:+1(415)651-8558)

Biorbyt LLC

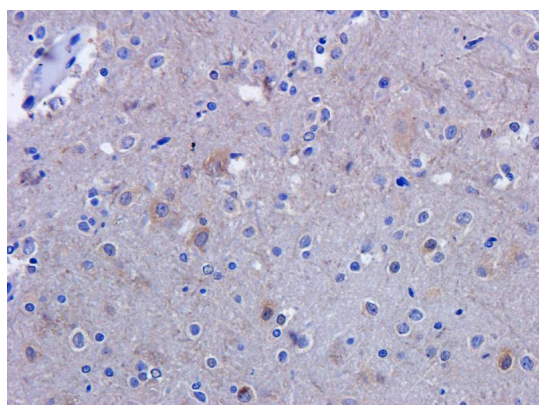
68 TW Alexander Drive
Research Triangle Park
Durham
NC 27713
United States

Email: info@biorbyt.com, support@biorbyt.com
Phone: [+1 \(415\) 906-5211](tel:+1(415)906-5211) | Fax: [+1 \(415\) 651-8558](tel:+1(415)651-8558)

Storage	Maintain refrigerated at 2-8°C for up to 2 weeks. For long term storage store at -20°C in small aliquots to prevent freeze-thaw cycles.
Note	For research use only
Entrez	6347
NCBI	002982, 002973, 31, 11
Expiration Date	12 months from date of receipt.



Immunohistochemical staining of rat brain tissue using anti-MCP1 (dilution of primary antibody - 2.5 ug/ml)



IHC-P staining of rat brain tissue using MCP1 antibody (dilution at 2.5 ug/ml)

Biorbyt Ltd.

7 Signet Court, Swann Road
Cambridge
CB5 8LA
United Kingdom

Email: info@biorbyt.com, support@biorbyt.com

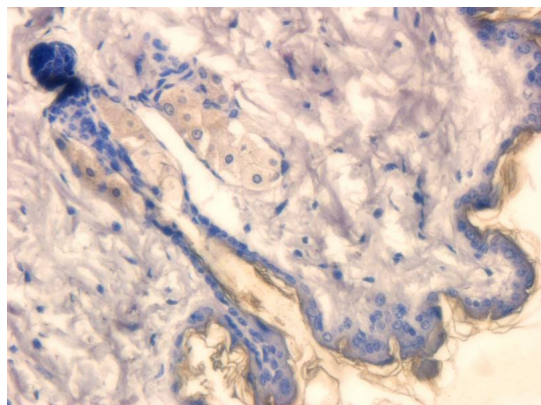
Phone: +44 (0)1223 859353 | Fax: +1 (415) 651-8558

Biorbyt LLC

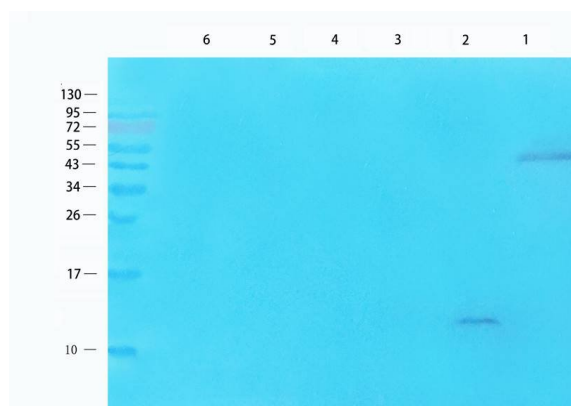
68 TW Alexander Drive
Research Triangle Park
Durham
NC 27713
United States

Email: info@biorbyt.com, support@biorbyt.com

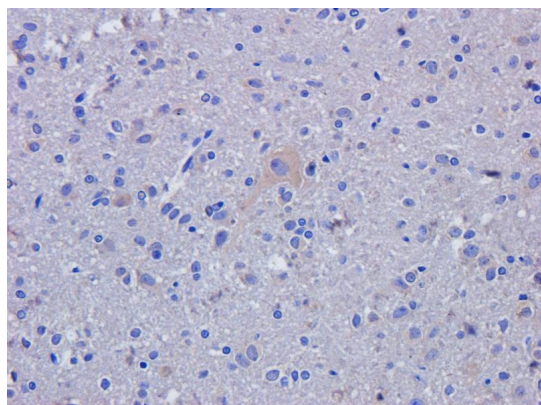
Phone: +1 (415) 906-5211 | Fax: +1 (415) 651-8558



IHC-P image of rat skin tissue using MCP1 antibody (dilution of primary antibody at 2.5 ug/ml)



Western blot analysis of human lung cancer (lane 1), mouse brain (lane 2), rat spleen (lane 3), rat skin (lane 4), rat small intestines (lane 5), Hela cells (lane 6) using MCP1 antibody (1 ug/ml)



IHC-P staining of rat brain tissue using anti- MCP1 (dilution at 2.5 ug/ml)

Biorbyt Ltd.

7 Signet Court, Swann Road
Cambridge
CB5 8LA
United Kingdom

Email: info@biorbyt.com, support@biorbyt.com

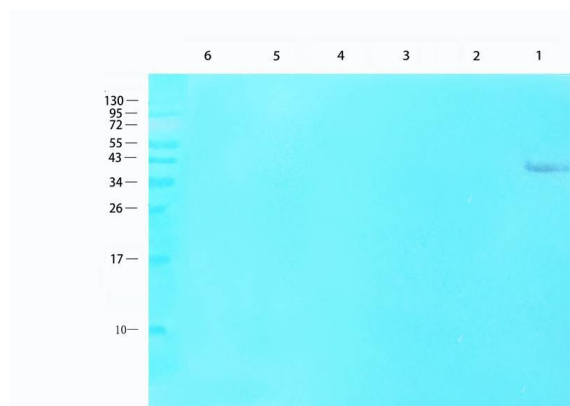
Phone: [+44 \(0\)1223 859353](tel:+44(0)1223859353) | Fax: [+1 \(415\) 651-8558](tel:+1(415)651-8558)

Biorbyt LLC

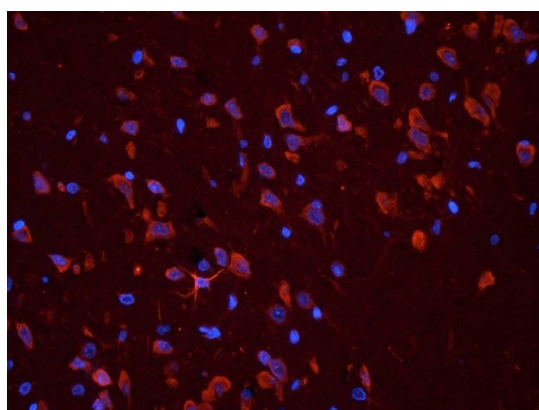
68 TW Alexander Drive
Research Triangle Park
Durham
NC 27713
United States

Email: info@biorbyt.com, support@biorbyt.com

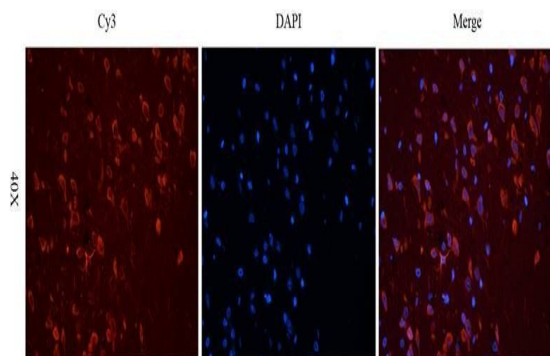
Phone: [+1 \(415\) 906-5211](tel:+1(415)906-5211) | Fax: [+1 \(415\) 651-8558](tel:+1(415)651-8558)



WB analysis of human lung cancer (lane 1), mouse brain (lane 2), rat spleen (lane 3), rat skin (lane 4), rat small intestines (lane 5), Hela cells (lane 6) using MCP1 antibody (1 ug/ml)



IF image of rat brain tissue using anti- MCP1 (primary antibody at 2.5 ug/ml)



Immunofluorescence image of rat brain tissue using anti- MCP1 (dilution at 2.5 ug/ml)

Biorbyt Ltd.

7 Signet Court, Swann Road
Cambridge
CB5 8LA
United Kingdom

Email: info@biorbyt.com, support@biorbyt.com

Phone: +44 (0)1223 859353 | Fax: +1 (415) 651-8558

Biorbyt LLC

68 TW Alexander Drive
Research Triangle Park
Durham
NC 27713
United States

Email: info@biorbyt.com, support@biorbyt.com

Phone: +1 (415) 906-5211 | Fax: +1 (415) 651-8558