

Product Datasheet

Human CNTF protein (Active) (orb359177)

Catalog Number	orb359177
Category	Proteins
Description	This Human CNTF protein (Active) spans the amino acid sequence from region 1-200aa. Purity: > 97% as determined by SDS-PAGE and HPLC.
Tag	Tag-Free
Form/Appearance	Lyophilized powder
Buffer/Preservatives	Lyophilized from a 0.2 µm filtered PBS, pH 7.4
Purity	> 97% as determined by SDS-PAGE and HPLC.
Protein Sequence	MAFTEHSPLTPHRRDLCSRSIWLARKIRSDLTALTESYVKHQGLNKNINLDSADGMPVASTD QWSELTEAERLQENLQAYRTFHVLLARLLEDQVHFPTPEGDFHQAIHTLLLQVAAFAYQIE ELMILLEYKIPRNEADGMPINVGDGGLFEKKLWGLKVLQELSQWTVRSIHDLRFISSHQTGIP ARGSHYIANNKKM
Protein Length	Full Length
UniProt ID	P26441
MW	22.9 kDa
Application notes	We recommend that this vial be briefly centrifuged prior to opening to bring the contents to the bottom. Please reconstitute protein in deionized sterile water to a concentration of 0.1-1.0 mg/mL. We recommend to add 5-50% of glycerol (final concentration) and aliquot for long-term storage at -20°C/-80°C. Our default final concentration of glycerol is 50%. Customers could use it as reference.
Endotoxins	Less than 1.0 EU/µg as determined by LAL method.
Source	E.Coli

Biorbyt Ltd.

7 Signet Court, Swann Road
Cambridge
CB5 8LA
United Kingdom

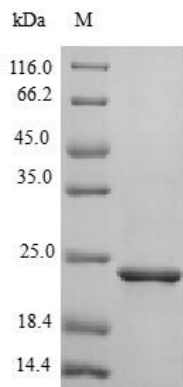
Email: info@biorbyt.com, support@biorbyt.com
Phone: [+44 \(0\)1223 859353](tel:+44(0)1223859353) | Fax: [+1 \(415\) 651-8558](tel:+1(415)651-8558)

Biorbyt LLC

68 TW Alexander Drive
Research Triangle Park
Durham
NC 27713
United States

Email: info@biorbyt.com, support@biorbyt.com
Phone: [+1 \(415\) 906-5211](tel:+1(415)906-5211) | Fax: [+1 \(415\) 651-8558](tel:+1(415)651-8558)

Biological Origin	Homo sapiens (Human)
Biological Activity	Fully biologically active when compared to standard. The ED50 as determined by a cell proliferation assay using human TF-1 cells is less than 150 ng/ml, corresponding to a specific activity of $\approx 6.7 \times 10^3$ IU/mg.
Expression Region	1-200aa
Storage	The shelf life is related to many factors, storage state, buffer ingredients, storage temperature and the stability of the protein itself. Generally, the shelf life of liquid form is 6 months at -20°C/-80°C. The shelf life of lyophilized form is 12 months at -20°C/-80°C.
Note	For research use only
Expiration Date	6 months from date of receipt.



SDS-PAGE analysis of Human CNTF protein (Active)

Biorbyt Ltd.

7 Signet Court, Swann Road
Cambridge
CB5 8LA
United Kingdom

Email: info@biorbyt.com, support@biorbyt.com

Phone: [+44 \(0\)1223 859353](tel:+44(0)1223859353) | Fax: [+1 \(415\) 651-8558](tel:+1(415)651-8558)

Biorbyt LLC

68 TW Alexander Drive
Research Triangle Park
Durham
NC 27713
United States

Email: info@biorbyt.com, support@biorbyt.com

Phone: [+1 \(415\) 906-5211](tel:+1(415)906-5211) | Fax: [+1 \(415\) 651-8558](tel:+1(415)651-8558)