

## Product Datasheet

### Mouse CCL27 protein (Active) (orb359120)

<b>Catalog Number</b>	orb359120
<b>Category</b>	Proteins
<b>Description</b>	This Mouse CCL27 protein (Active) spans the amino acid sequence from region 26-120aa. Purity: > 98% as determined by SDS-PAGE and HPLC.
<b>Tag</b>	Tag-Free
<b>Form/Appearance</b>	Lyophilized powder
<b>Buffer/Preservatives</b>	Lyophilized from a 0.2 µm filtered PBS, pH 7.4
<b>Purity</b>	> 98% as determined by SDS-PAGE and HPLC.
<b>Protein Sequence</b>	LPLPSSTSCCTQLYRQPLPSRLLRRIVHMELQEADGDCHLQAVVLHLARRSVCVHPQNRSL ARWLERQGKRLQGTVPSLNLVLQKKMYSNPQQQN
<b>Protein Length</b>	Full Length of Mature Protein
<b>UniProt ID</b>	<b>Q9Z1X0</b>
<b>MW</b>	10.9 kDa
<b>Application notes</b>	We recommend that this vial be briefly centrifuged prior to opening to bring the contents to the bottom. Please reconstitute protein in deionized sterile water to a concentration of 0.1-1.0 mg/mL. We recommend to add 5-50% of glycerol (final concentration) and aliquot for long-term storage at -20°C/-80°C. Our default final concentration of glycerol is 50%. Customers could use it as reference.
<b>Endotoxins</b>	Less than 1.0 EU/µg as determined by LAL method.
<b>Source</b>	E.Coli
<b>Biological Origin</b>	Mus musculus (Mouse)

**Biorbyt Ltd.**

7 Signet Court, Swann Road  
Cambridge  
CB5 8LA  
United Kingdom

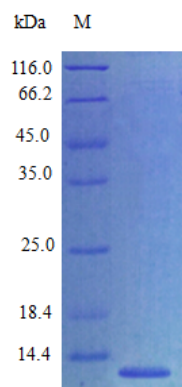
Email: [info@biorbyt.com](mailto:info@biorbyt.com), [support@biorbyt.com](mailto:support@biorbyt.com)  
Phone: [+44 \(0\)1223 859353](tel:+44(0)1223859353) | Fax: [+1 \(415\) 651-8558](tel:+1(415)651-8558)

**Biorbyt LLC**

68 TW Alexander Drive  
Research Triangle Park  
Durham  
NC 27713  
United States

Email: [info@biorbyt.com](mailto:info@biorbyt.com), [support@biorbyt.com](mailto:support@biorbyt.com)  
Phone: [+1 \(415\) 906-5211](tel:+1(415)906-5211) | Fax: [+1 \(415\) 651-8558](tel:+1(415)651-8558)

<b>Biological Activity</b>	Fully biologically active when compared to standard. The biological activity determined by a chemotaxis bioassay using human peripheral blood lymphocytes is in a concentration range of 10-100 ng/ml.
<b>Expression Region</b>	26-120aa
<b>Storage</b>	The shelf life is related to many factors, storage state, buffer ingredients, storage temperature and the stability of the protein itself. Generally, the shelf life of liquid form is 6 months at -20°C/-80°C. The shelf life of lyophilized form is 12 months at -20°C/-80°C.
<b>Note</b>	For research use only
<b>Expiration Date</b>	6 months from date of receipt.

**Biorbyt Ltd.**

7 Signet Court, Swann Road  
Cambridge  
CB5 8LA  
United Kingdom

Email: [info@biorbyt.com](mailto:info@biorbyt.com), [support@biorbyt.com](mailto:support@biorbyt.com)

Phone: [+44 \(0\)1223 859353](tel:+44(0)1223859353) | Fax: [+1 \(415\) 651-8558](tel:+1(415)6518558)

**Biorbyt LLC**

68 TW Alexander Drive  
Research Triangle Park  
Durham  
NC 27713  
United States

Email: [info@biorbyt.com](mailto:info@biorbyt.com), [support@biorbyt.com](mailto:support@biorbyt.com)

Phone: [+1 \(415\) 906-5211](tel:+1(415)9065211) | Fax: [+1 \(415\) 651-8558](tel:+1(415)6518558)