

Product Datasheet

Fab Mouse IgG (H&L) Antibody (orb348471)

Description	Fab Mouse IgG (H&L) antibody
Species/Host	Goat
Reactivity	Mouse
Conjugation	Unconjugated
Tested Applications	DOT, ELISA, IHC, WB
Immunogen	Anti-Mouse IgG (H&L) antibody was produced by repeated immunization with mouse IgG whole molecule in goat.
Preservatives	0.01% (w/v) Sodium Azide
Form/Appearance	Liquid (sterile filtered)
Concentration	1.0 mg/ml
Storage	Store vial at 4° C prior to opening. This product is stable at 4° C as an undiluted liquid. Dilute only prior to immediate use.
Note	For research use only
Application notes	Fab Anti-Mouse IgG has been tested by ELISA, dot blot, and SDS-PAGE and is suitable for highly specific immunological methods requiring extremely low background levels, lot-to-lot consistency, high titer and specificity. This secondary antibody anti-Mouse is ideal for investigators who routinely perform titration assays, western-blot, immunoprecipitation and more generally immunoassays.
Isotype	IgG Fab
Clonality	Polyclonal
Antibody Type	Secondary Antibody

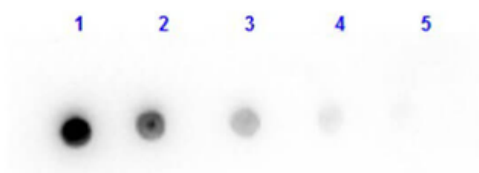
Biorbyt Ltd.

7 Signet Court, Swann's Road,
Cambridge, CB5 8LA, United Kingdom
Email: info@biorbyt.com, support@biorbyt.com
Phone: [+44 \(0\) 1223 859-353](tel:+44(0)1223859353) | Fax: [+1 \(415\) 651-8558](tel:+1(415)6518558)

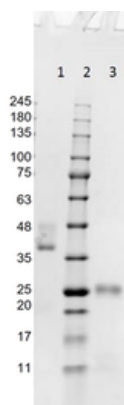
Biorbyt LLC.

68 TW Alexander Drive,
Durham, NC, 27713, United States
Email: info@biorbyt.com, support@biorbyt.com
Phone: [+1 \(415\) 906-5211](tel:+1(415)9065211) | Fax: [+1 \(415\) 651-8558](tel:+1(415)6518558)

Purity	This product was prepared from monospecific antiserum by immunoaffinity chromatography using Mouse IgG coupled to agarose beads followed by solid phase adsorption(s) to remove any unwanted reactivities, papain digestion and chromatographic separation. Assay by immunoelectrophoresis resulted in a single precipitin arc against anti-Goat Serum. No reaction was observed against anti-Papain or anti-Goat IgG F(c).
Dilution Range	ELISA: 1:15,000, IHC: 1:1,000 - 1:5,000, WB: 1:2,000 - 1:10,000
Expiration Date	12 months from date of receipt.



Dot Blot results of Goat Fab Anti-Mouse IgG Antibody. Dots are Mouse IgG at (1) 100 ng, (2) 33.3 ng, (3) 11.1 ng, (4) 3.70 ng, (5) 1.23 ng. Blocking: orb348637 for 30 min at RT. Primary Antibody: Goat Fab Anti-Mouse IgG at 1 µg/ml for 1hr at RT. Secondary Antibody: Donkey Anti-Goat IgG HRP at 1:40000 for 30 min at RT.



SDS-PAGE results of Goat Fab Anti-Mouse IgG (H&L) Antibody. Lane 1: Goat Fab Anti-Mouse - Non-reduced. Lane 2: Opal Prestained Ladder -. Lane 3: Goat Fab Anti-Mouse - Reduced. Load: 1.0ug. Coomassie stained and imaged.

Biorbyt Ltd.

7 Signet Court, Swann's Road,
Cambridge, CB5 8LA, United Kingdom
Email: info@biorbyt.com, support@biorbyt.com
Phone: [+44 \(0\) 1223 859-353](tel:+44(0)1223859353) | Fax: [+1 \(415\) 651-8558](tel:+1(415)6518558)

Biorbyt LLC.

68 TW Alexander Drive,
Durham, NC, 27713, United States
Email: info@biorbyt.com, support@biorbyt.com
Phone: [+1 \(415\) 906-5211](tel:+1(415)9065211) | Fax: [+1 \(415\) 651-8558](tel:+1(415)6518558)