

## Product Datasheet

# F(ab')<sub>2</sub> Rabbit IgG (H&L) Antibody Fluorescein Conjugated Pre-Adsorbed (orb348305)

<b>Catalog Number</b>	orb348305
<b>Category</b>	Antibodies
<b>Description</b>	F(ab') <sub>2</sub> Rabbit IgG (H&L) antibody (FITC)
<b>Clonality</b>	Polyclonal
<b>Species/Host</b>	Goat
<b>Isotype</b>	IgG F(ab') <sub>2</sub>
<b>Conjugation</b>	FITC
<b>Reactivity</b>	Rabbit
<b>Form/Appearance</b>	Lyophilized
<b>Concentration</b>	1.0 mg/mL
<b>Buffer/Preservatives</b>	Preservative: 0.01% (w/v) Sodium Azide. Stabilizer: 10 mg/mL Bovine Serum Albumin (rAlbumin) - Immunoglobulin and Protease free; Buffer: 0.02 M Potassium Phosphate, 0.15 M Sodium Chloride, pH 7.2
<b>Purity</b>	This product was prepared from monospecific antiserum by immunoaffinity chromatography using Rabbit IgG coupled to agarose beads followed by solid phase adsorption(s) to remove any unwanted reactivities, pepsin digestion and chromatographic separation. Assay by immunoelectrophoresis resulted in a single precipitin arc against anti-Fluorescein, anti-Goat Serum, Rabbit IgG and Rabbit Serum. No reaction was observed against anti-Pepsin, anti-Goat IgG F(c) or Bovine, Chicken, Goat, Guinea Pig, Hamster, Horse, Human, Mouse, Rat and Sheep Serum Proteins.

**Biorbyt Ltd.**

7 Signet Court, Swann Road  
Cambridge  
CB5 8LA  
United Kingdom

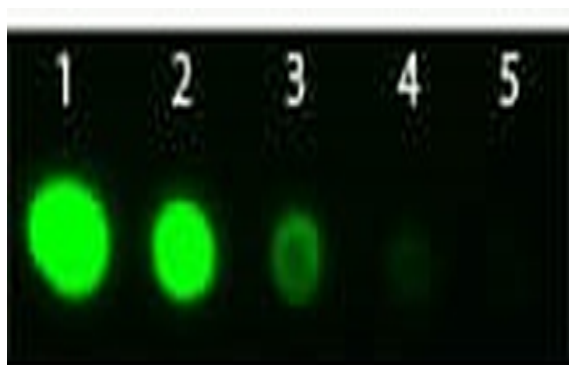
Email: [info@biorbyt.com](mailto:info@biorbyt.com), [support@biorbyt.com](mailto:support@biorbyt.com)  
Phone: [+44 \(0\)1223 859353](tel:+44(0)1223859353) | Fax: [+1 \(415\) 651-8558](tel:+1(415)651-8558)

**Biorbyt LLC**

68 TW Alexander Drive  
Research Triangle Park  
Durham  
NC 27713  
United States

Email: [info@biorbyt.com](mailto:info@biorbyt.com), [support@biorbyt.com](mailto:support@biorbyt.com)  
Phone: [+1 \(415\) 906-5211](tel:+1(415)906-5211) | Fax: [+1 \(415\) 651-8558](tel:+1(415)651-8558)

<b>Immunogen</b>	Rabbit IgG whole molecule
<b>Tested applications</b>	DOT, FC, FLISA, IF, WB
<b>Dilution range</b>	FLISA: 1:10,000 - 1:50,000, FC: 1:500 - 1:2,500, IF: 1:1,000 - 1:5,000
<b>Application notes</b>	F(ab') <sub>2</sub> Anti-Rabbit IgG Fluorescein Conjugated Antibody has been tested by dot blot and western blot and is designed for immunofluorescence microscopy, fluorescence based plate assays (FLISA) and fluorescent western blotting. This product is also suitable for multiplex analysis, including multicolor imaging, utilizing various commercial platforms requiring extremely low background levels, absence of F(c) mediated binding, lot-to-lot consistency, high titer and specificity.
<b>Antibody Type</b>	Secondary Antibody
<b>Biological Activity</b>	3.35
<b>Storage</b>	Store vial at 4° C prior to restoration. For extended storage aliquot contents and freeze at -20° C or below. Avoid cycles of freezing and thawing. Centrifuge product if not completely clear after standing at room temperature. This product is stable for several weeks at 4° C as an undiluted liquid. Dilute only prior to immediate use.
<b>Note</b>	For research use only
<b>Expiration Date</b>	12 months from date of receipt.



Dot Blot of Goat Fab<sub>2</sub> anti-Rabbit IgG Antibody Fluorescein Conjugated Pre-Absorbed. Antigen: Rabbit IgG. Load: Lane 1 - 100 ng Lane 2 - 33.3 ng Lane 3 - 11.1 ng Lane 4 - 3.70 ng Lane 5 - 1.23 ng. Primary antibody: n/a. Secondary antibody: Goat Fab<sub>2</sub> anti-Rabbit IgG Antibody Fluorescein Conjugated Pre-Absorbed at 1:1000 for 1 HR at RT. Block: orb348637 for 1 HR at RT.

**Biorbyt Ltd.**

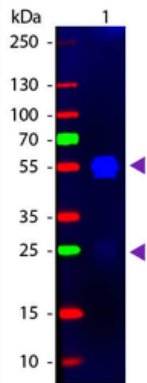
7 Signet Court, Swann Road  
Cambridge  
CB5 8LA  
United Kingdom

Email: [info@biorbyt.com](mailto:info@biorbyt.com), [support@biorbyt.com](mailto:support@biorbyt.com)  
Phone: +44 (0)1223 859353 | Fax: +1 (415) 651-8558

**Biorbyt LLC**

68 TW Alexander Drive  
Research Triangle Park  
Durham  
NC 27713  
United States

Email: [info@biorbyt.com](mailto:info@biorbyt.com), [support@biorbyt.com](mailto:support@biorbyt.com)  
Phone: +1 (415) 906-5211 | Fax: +1 (415) 651-8558



Western blot of Fluorescein conjugated Goat F(ab')<sub>2</sub> Anti-Rabbit IgG Pre-Adsorbed secondary antibody. Lane 1: Rabbit IgG. Lane 2: None. Load: 50 ng per lane. Primary antibody: None. Secondary antibody: Fluorescein goat secondary antibody at 1:1000 for 60 min at RT. Blocking: orb348637 for 30 min at RT. Predicted/Observed size: 25 & 55 kDa, 25 & 55 kDa for Rabbit IgG. Other band(s): None.

**Biorbyt Ltd.**

7 Signet Court, Swann Road  
Cambridge  
CB5 8LA  
United Kingdom

Email: [info@biorbyt.com](mailto:info@biorbyt.com), [support@biorbyt.com](mailto:support@biorbyt.com)

Phone: [+44 \(0\)1223 859353](tel:+44(0)1223859353) | Fax: [+1 \(415\) 651-8558](tel:+1(415)651-8558)

**Biorbyt LLC**

68 TW Alexander Drive  
Research Triangle Park  
Durham  
NC 27713  
United States

Email: [info@biorbyt.com](mailto:info@biorbyt.com), [support@biorbyt.com](mailto:support@biorbyt.com)

Phone: [+1 \(415\) 906-5211](tel:+1(415)906-5211) | Fax: [+1 \(415\) 651-8558](tel:+1(415)651-8558)