

## Product Datasheet

### F(ab')<sub>2</sub> Rabbit IgG Fc Antibody (orb348301)

<b>Catalog Number</b>	orb348301
<b>Description</b>	F(ab') <sub>2</sub> Rabbit IgG F(c) antibody
<b>Species/Host</b>	Goat
<b>Reactivity</b>	Rabbit
<b>Conjugation</b>	Unconjugated
<b>Tested Applications</b>	ELISA, IHC, WB
<b>Immunogen</b>	Rabbit IgG F(c) fragment
<b>Preservatives</b>	0.01% (w/v) Sodium Azide
<b>Form/Appearance</b>	Liquid (sterile filtered)
<b>Concentration</b>	1.1 mg/mL
<b>Storage</b>	Store vial at 4° C prior to opening. This product is stable for several weeks at 4° C as an undiluted liquid. Dilute only prior to immediate use. For extended storage aliquot contents and freeze at -20° C or below. Avoid cycles of freezing and thawing.
<b>Note</b>	For research use only
<b>Application notes</b>	F(ab') <sub>2</sub> Anti-Rabbit IgG F(c) Antibody has been tested by SDS-PAGE and is suitable for immunomicroscopy and flow cytometry or FACS analysis as well as other antibody based fluorescent assays requiring extremely low background levels, absence of F(c) mediated binding, lot-to-lot consistency, high titer and specificity. The maximum amount of reagent required to stain 1 x 10 <sup>6</sup> cells in flow cytometry is approximately 1.0 µg of antibody. Lesser amounts of reagent may be sufficient for staining. Optimal titers for other applications should be determined by the researcher. As a general guideline dilutions of 1:100 to 1:250 should be suitable for most applications.

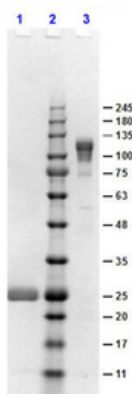
#### Biorbyt Ltd.

7 Signet Court, Swann's Road,  
Cambridge, CB5 8LA, United Kingdom  
Email: [info@biorbyt.com](mailto:info@biorbyt.com), [support@biorbyt.com](mailto:support@biorbyt.com)  
Phone: [+44 \(0\) 1223 859-353](tel:+44(0)1223859353) | Fax: [+1 \(415\) 651-8558](tel:+1(415)6518558)

#### Biorbyt LLC.

68 TW Alexander Drive,  
Durham, NC, 27713, United States  
Email: [info@biorbyt.com](mailto:info@biorbyt.com), [support@biorbyt.com](mailto:support@biorbyt.com)  
Phone: [+1 \(415\) 906-5211](tel:+1(415)9065211) | Fax: [+1 \(415\) 651-8558](tel:+1(415)6518558)

<b>Isotype</b>	IgG F(ab') <sub>2</sub>
<b>Clonality</b>	Polyclonal
<b>Antibody Type</b>	Secondary Antibody
<b>Purity</b>	This product was prepared from monospecific antiserum by immunoaffinity chromatography using Rabbit IgG coupled to agarose beads followed by solid phase adsorption(s) to remove any unwanted reactivities, pepsin digestion and chromatographic separation. Assay by immunoelectrophoresis resulted in a single precipitin arc against anti-Goat Serum, Rabbit IgG, Rabbit IgG F(c) and Rabbit Serum. No reaction was observed against anti-Pepsin, anti-Goat IgG F(c), Rabbit IgG F(ab') <sub>2</sub> .
<b>Dilution Range</b>	ELISA: 1:20,000, IHC: 1:500 - 1:2,000, WB: 1:500 - 1:2,000
<b>Expiration Date</b>	12 months from date of receipt.



SDS-PAGE results of Goat F(ab')<sub>2</sub> Anti-Rabbit IgG F(c) Antibody. Lane 1: reduced Goat F(ab')<sub>2</sub> Anti-Rabbit IgG F(c). Lane 2: Opal PreStained Molecular Weight Ladder. Lane 3: non-reduced Goat F(ab')<sub>2</sub> Anti-Rabbit IgG F(c). Load: 1.0 µg. 4-20% SDS Gel, Coomassie Blue Stained.

**Biorbyt Ltd.**

7 Signet Court, Swann's Road,  
Cambridge, CB5 8LA, United Kingdom  
Email: [info@biorbyt.com](mailto:info@biorbyt.com), [support@biorbyt.com](mailto:support@biorbyt.com)  
Phone: [+44 \(0\) 1223 859-353](tel:+44(0)1223859353) | Fax: [+1 \(415\) 651-8558](tel:+1(415)6518558)

**Biorbyt LLC.**

68 TW Alexander Drive,  
Durham, NC, 27713, United States  
Email: [info@biorbyt.com](mailto:info@biorbyt.com), [support@biorbyt.com](mailto:support@biorbyt.com)  
Phone: [+1 \(415\) 906-5211](tel:+1(415)9065211) | Fax: [+1 \(415\) 651-8558](tel:+1(415)6518558)